



# OKLAHOMA NEWS



Vol. 8, No. 3

[www.preservationoklahoma.org](http://www.preservationoklahoma.org)

April 2002

## INSIDE ...

### PAGE 2

- O'Bannon conference keynote speaker
- CLGs active in 2002

### PAGE 3

- Six new properties on 2002 most endangered list

### PAGE 4

- Four Oklahoma properties listed in National Register
- SHPO offers grants for National Register nominations

### PAGE 5

- Centre Theatre preservation and construction connections
- Walnut Bridge update
- Preservation Web sites and Listserves

### PAGE 6

- Battlefield acquisition grants
- Civil War sites in Oklahoma

### PAGE 7

- New Main Streets
- MetaFund

### PAGE 8

- Low-interest loan pools across Oklahoma

## Statewide Preservation Conference in Durant

Looking for ways to develop heritage tourism in your community? Searching for guidance on health and life safety codes in rehabilitation work? Seeking ideas for building a strong local preservation effort? Investigating southeastern Oklahoma's rich heritage?

Then join us May 16-18 in downtown Durant for Oklahoma's 14th Annual Statewide Preservation Conference. You will find the help you are looking for and have a chance to interact with others on similar quests.

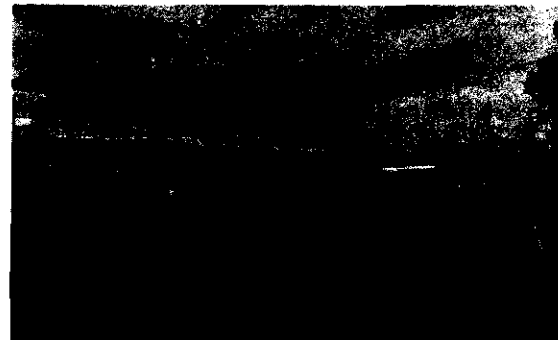
Concurrent session themes include "A Heritage to Share," "Preparing for Successful Preservation," and "Historic Preservation Bridges Time." Conference co-sponsors include the State Historic Preservation Office, Oklahoma Historical Society, Oklahoma Main Street Center, Oklahoma Department of Commerce, Preservation Oklahoma, Inc., Durant Main Street, Choctaw Nation of Oklahoma, City of Durant, and Durant Historical Society.

On Saturday, conference participants will enjoy a very special event at historic Wheelock Academy. There will be a Trail of Tears walk, Choctaw arts and crafts, storytelling, dancers, and food. You will learn about this National Historic Landmark which served as a boarding school for Choctaw girls from 1833 to 1955 and may want to bring the

whole family to spend the day.

Other events include the opening reception at the Three Valley Museum, downtown and local historic walking and bus tours including the Choctaw Nation HQ and SEOSU Campus, Fort Washita tour, the annual awards banquet, and Preservation Oklahoma, Inc.'s, annual meeting and luncheon. Full conference registration and program details will be mailed in early April.

If you have questions contact Melvena Heisch at (405) 522-4484 or [mheisch@ok-history.mus.ok.us](mailto:mheisch@ok-history.mus.ok.us) or Donna Dow at (580) 924-1550 or [ddow@durantmainstreet.org](mailto:ddow@durantmainstreet.org). We look forward to seeing you there.



*A tour of the Wheelock Academy and festivities will take place at this year's conference.*

## Attention Architects and Planners

Architects and Planners who attend Oklahoma's 14th Annual Statewide Preservation Conference qualify for continuing education credits. Register for the conference, special forms to document your attendance will be provided there. Registered architects will earn American Institute of Architects Continuing Education Systems (AIA/CES) Learning Health Hours (LU) for their attendance. Many of the sessions meet the AIA/CES Health, Safety,

and Welfare (HSW) criteria.

Contact Catherine Montgomery, Historic Preservation Architect, SHPO at (405) 522-4479 or [catherinem@ok-history.mus.ok.us](mailto:catherinem@ok-history.mus.ok.us) if you have questions about AIA/CES credits. Planners who attend the conference will earn American Planning Association Continuing Education Credits (CEs) at the rate of 8.0 hours for each full day and 3.5 hours for the special tour on Saturday.

# UPCOMING

Please check out the Web site of Preservation Oklahoma, Inc. at [www.preservationoklahoma.org](http://www.preservationoklahoma.org). This Web site was made possible in part by a grant from the Kirkpatrick Foundation and the reduced rates of Charity Advantage, at [www.charityadvantage.com](http://www.charityadvantage.com) if your nonprofit is interested in a quality Web site and operation at reduced cost. As time permits, more features and articles will be placed on the site but for right now you can utilize it to get updates on future scheduled events on our most endangered lecture series. At the time of this printing, the schedule remains as follows:

## APRIL

**7-10** *Historic Preservation, National Town Meeting on Main Street Annual Conference* in Ft. Worth, Texas

**13-17** *American Planning Association, 2002 National Conference on Planning, Chicago.*  
[www.planning.org](http://www.planning.org) or (202) 872-0611 for more information

**15** *Preservation Oklahoma, Inc., Lecture #5, Am Henderson will speak on "Rural Preservation in Oklahoma," 7:00 p.m., at the Pioneer Woman Museum in Ponca City, 701 Monument.*  
*"The first 10 Preservation Oklahoma, Inc. members that call Trent Margrif at (405) 232-5747 will be signed up for a tour of Ponca City historic sites to take place before the lecture.*

**17-21** *The 2002 U.S. ICOMOS Symposium, "Heritage Preservation as a Tool for Social Change" LaFonda Hotel in Santa Fe, NM, [acrocker@cstones.org](mailto:acrocker@cstones.org) for more info.*

## MAY

**3-5** *National New Deal Preservation Association Conference, "The New Deal: Past, Present, and Future," Art Institute of Chicago with featured speakers Francis V. O'Conner and Studs Terkel. [newdeal@cybermesa.com](mailto:newdeal@cybermesa.com) for more info.*

**16** *Oklahoma's 14th Annual Statewide Preservation Conference, Durant (details available April 1st)*  
*Preservation Oklahoma, Inc., Lecture #6, Trent Margrif will speak on the 2002 list of Oklahoma's Most Endangered Historic Properties at a session of the annual conference in Durant.*

## JUNE

**26** (9:30-12) SHPO, "The Section 106 Review Process: Introduction & Overview" 9:30 a.m.-12 p.m.

SHPO, "Determination of Eligibility under Section 106" 1:30-5 p.m.

**27** SHPO, "Introduction to the National Register of Historic Places," 9:30 a.m.-5 p.m.

**28** SHPO, Federal Tax Incentives for Rehabilitating Historic Buildings, 9:30 a.m.-12 p.m.

SHPO, "Guidelines for Rehabilitating Historic Buildings," 1:30-5 p.m.

Location: Exchange Bank & Trust, Horizon Room, 6th & Delaware, Perry, OK

## AUGUST

**1-4** *National Alliance of Preservation Commissions, Forum 2002, San Antonio, for more information: [www.arches.uga.edu/~nappc](http://www.arches.uga.edu/~nappc), [nappc@uga.edu](mailto:nappc@uga.edu) (706)542 0169*

Tentative schedule for Most Endangered list exhibit and lecture series as follows. Call our office or e-mail [info@preservationoklahoma.org](mailto:info@preservationoklahoma.org) for details.

June - Idabel	Oct. - Altus
July - El Reno	Nov. - Woodward
Aug. - Wagoner	Dec. - Pawhuska
Sept. - Okmulgee	

# Indiana First Lady Judy O'Bannon Conference Keynote

**A**nationally recognized preservation leader and advocate of strong historic preservation efforts, Indiana First Lady Judy O'Bannon was elected to the National Trust for Historic Preservation Board of Trustees last October. She chairs their Public Advocacy Committee, which focuses on preservation and community development, particularly smart growth issues. She will address the Statewide Preservation Conference at 1:45 p.m. on May 17. She will speak on her vision of "Communities Building Community."

O'Bannon serves as an officer of the Historic Landmarks Foundation of Indiana, one of the most successful statewide nonprofit organizations in the country, and she is a member of the Main Street Council, which she chaired from 1987 to 1996. She is a particularly vocal advocate of communities becoming Main Street cities. This program stresses a four-point approach to commercial area revitalization, including organization, promotion, economic restructuring and design. In short, it's

economic development through preservation. She chairs the 25-member Indiana 2016 Task Force, which is initiating and supporting local and statewide efforts. The task force focuses on the areas of education, the environment, early childhood development, arts and culture. O'Bannon has led community-building delegations to countries across the world. Each trip has been followed by initiatives that have strengthened Indiana's role in the global community.

In addition, the First Lady and Gov. O'Bannon have joined in leading the "O'Bannon Book Buddy" program, which encourages adults to help children learn to read and similar initiatives.

The First Lady was graduated Phi Beta Kappa in 1957 from Indiana University with a bachelor's degree in social work. She was selected as a Rockefeller Theological Scholar and was the first woman to attend the Louisville Presbyterian Theological Seminary.

## CLGs Active in 2002

by Glen Vaughn-Roberson, CLG Coordinator, SHPO

**E**ach year the State Historic Preservation Office allocates a portion of its Historic Preservation Fund award from the U.S. Department of the Interior for subgrants to Oklahoma's Certified Local Governments. Several of Oklahoma's active CLGs are using their subgrants from the CLG Fund to carry out projects important to the development of their local historic preservation programs.

The city of Ardmore is preparing a nomination to the National Register of Historic Places for the 23-building Caddo-Broadway Historic District adjacent to the downtown commercial district.

The city of Guthrie is spending its share of the CLG Fund to continue updating its inventory of buildings in the Guthrie Historic District and is focusing on the West Guthrie Townsite and the East Guthrie Townsite this year.

The City of Norman is completing an intensive level architectural/historic survey of Andrews Park

and of the Sooner Homes neighborhood.

The City of Oklahoma City has already conducted a historic preservation workshop with a portion of its FY 2002 CLG Fund grant and will retain a consultant to develop design guidelines for each of its locally designated historic districts.

Ponca City is using the information from the intensive level survey it did last year as the basis for a National Register nomination for the Gateway residential area.

The city of Tulsa will use its CLG grant to complete an intensive level survey of West Tulsa, more commonly known as Red Fork where Sute A. Bland #1, the first oil well drilled in Tulsa County, still pumps.

The CLG program is a partnership of the State Historic Preservation Office, local governments, and the National Park Service. The SHPO provides technical and financial assistance to each CLG. For more information regarding the program contact

# Six new properties on 2002 most endangered list

Preservation Oklahoma, Inc., "unveiled" its 2002 list of Oklahoma's Most Endangered Historic Properties at the historic Carnegie Library in Ardmore on January 21. The annual list of significant threatened historic properties is a project between Preservation Oklahoma, Inc., and the Oklahoma Historical Society's State Historic Preservation Office.

The accompanying exhibit and lecture series program is made possible in part by the National Endowment for the Humanities and Oklahoma Humanities Council, MidFirst Bank, the Kirkpatrick Foundation, and local sponsors.

The Citizens State Bank Building is one of several futuristic banking facilities built during the late 1950s in Oklahoma City. The "gold dome" is an early example of a geodesic dome used in a commercial building and variation on Buckminster Fuller's 1954 patent. Located along Route 66, this structure represents the "recent past," a category citizens must increasingly appreciate in the future.

The future of the "gold dome" is severely threatened by current property owners BankOne, which initially applied to demolish the structure they currently use as a banking facility in favor of a more typical standard branch bank and a Walgreens drugstore.

The group "Citizens for the Golden Dome" formed in response to the uncertain fate of this landmark, requesting several actions by BankOne to assist in its future preservation. These measures have not been taken. BankOne was recently denied demolition approval of the gold dome by the city Urban Design Commission; this action is now being appealed to the Board of Adjustment.

The Pawnee Municipal Bathhouse in Pawnee was constructed by the Works Progress Administration (WPA) in 1939. Adjacent to a manmade lake, this bathhouse is a two-story structure with four shower rooms. Made of native stone, architecturally the structure is unique in terms of building type, style, material, and workmanship. Natural deterioration and occasional vandalism are significant threats to this property.

The Pawnee Environmental Education Center is located nearby as an outdoor classroom and the bathhouse structure could be used with this program or as a regional swimming pool. Funding must be secured to breathe new life into the rehabilitation of this unique structure and landscaped area.

Known as the "Mother of the Mother Road," Lucile Hamons delighted in the traveling visitors who frequented her establishment along Route 66 in Hydro. After nearly 60 years of operating this gas station, Provine Service Station, Lucile passed away in August 2000 and the property was placed for sale. This Bungalow/Craftsman structure includes wooden shingles, exposed rafter tails, and tapered stucco piers. Initially believed to be sold on eBay, that transaction could not be worked out. The property is again for sale and a preservation-minded future owner is sought. Lucile's retains its integrity and is an unusual example of a rural station

that combined as a second-story living quarter.

The five-story Triangle Building in downtown Pawhuska has its north tip clipped, giving it a narrow fourth façade, which makes this 1913 structure appear as a "flatiron" building or triangle. It is a classic early day skyscraper designed as a column with a base, shaft, and capital. Its cast stone ornamentation is "Sullivanesque" with an intricate geometric pattern of intersecting circles, triangles, and squares.

The building is currently uninhabited and deteriorating, but has potential for use as office space downtown.

The Lake Wister Archeological District in Latimer and LeFlore Counties is currently endangered by encroaching development. A pre-history site is annually included on the endangered list to bring awareness to the erosion, vandalism, and treasure seekers that continue to permanently damage archeological sites in the state and threaten their future use for research and study. The Oklahoma Archeological Survey serves as the central repository for records on known archeological sites, currently some 15,000 sites have been recorded across the state. The Archeological Survey also works on long range plans to aid in determining future threats to archeological sites and identifying new means of protecting and preserving these irreplaceable resources.

Included on America's 11 Most Endangered Places, historic theatres have been added as a statewide listing. Oklahoma still retains many of its downtown movie theatres, but many more are threatened. When historic theatres close they are often demolished, destroying downtown centers of community activity and a loss of reliable income for surrounding businesses. Adaptively reusing theatres as performing arts centers, antique malls, nightclubs, and even churches can save a theatre's unique architecture. Many Oklahomans can point to where their downtown theatre once stood or is currently abandoned, what the theatre is used for now, or an historic theatre still in use to show movies and keep the buildings the center of community life.

Oklahoma's Most Endangered List focuses attention on the challenges faced by significant historic resources across the state. These threats include deferred maintenance, neglect, natural disaster, and demolition among other hazards. Listing has played a key role in the preservation efforts of several significant Oklahoma historic properties including the Warehouse Market in Tulsa, the Old Stroud School in Stroud, and the Washita Battlefield site near Cheyenne.

Preservation Oklahoma, Inc., also maintains a list of 20 historic properties on the watch list that can be found at the Web site [www.preservationoklahoma.org](http://www.preservationoklahoma.org). Also continue to check this website for future updates on the monthly lecture series and exhibit tour across the state. Or call Trent Margrif at (405) 232-5747 for more information.

The 2002 list includes six new properties and five properties retained from the previous list.

The new listings are:

- The Citizens State Bank Building "gold dome" in Oklahoma City
- The Pawnee Municipal Bathhouse in Pawnee
- The Provine Service Station "Lucile's" in Hydro
- The Triangle Building in Pawhuska
- The Lake Wister Archeological District in Latimer and LeFlore Counties
- Oklahoma's historic theatres.

Retained are:

- The Galt-Franklin House in Ardmore
- The Mayo Hotel in Tulsa
- The Skirvin Hotel in Oklahoma City
- Oklahoma's Historic County Courthouses
- The Wheelock Academy and Mission in McCurtain County.

The Wheelock Academy remains the only Oklahoma property ever to be included on America's 11 Most Endangered Historic Places listed annually by the National Trust for Historic Preservation.



# Four Oklahoma Properties Listed in National Register

by Jim Gabbert, Architectural Historian, SHPO

- The Dawson School
- The Robert Lawton Jones House
- The Pollock House
- The Bavinger House

The State Historic Preservation Office is pleased to announce the addition of four Oklahoma properties to the National Register of Historic Places. Included are a historic stone schoolhouse in Tulsa and three architecturally significant modern houses located in Norman, Oklahoma City, and Tulsa. The addition of these four properties brings to 988 the total number of Oklahoma listings in the National Register. The National Register recognizes properties that are significant in our nation's history at the local, state, or national level.

The Dawson School, constructed in 1908, served the small community of Dawson east of Tulsa. Constructed out of locally quarried sandstone, its distinctive arched openings are indicative of the Romanesque style. The building served as a school until the consolidation of the school district into the city of Tulsa. It has since served as a community center. The City of Tulsa Parks Department has plans to restore the original bell tower, removed some time in the past. The nomination was prepared by Cynthia Savage, a historian under contract to the City of Tulsa. The Dawson School was listed in the National Register on December 7, 2001, for its architectural and educational significance in the community.

A second Tulsa property was added to the National Register on December 13, 2001. The Robert Lawton Jones House was nominated to the National Register for its significance in the area of architecture. The Jones House was constructed in 1959 and designed in the International Style. Robert Lawton Jones, the architect of the house and principle of the firm Murray Jones Murray, studied under renowned architect Mies Van de Rohe. This Miesian influence is evident in the design of the Jones House, notably in the external expression of the structure and the fluid use of internal space. Jones incorporated many precepts of the Miesian box to the peculiarities of the Oklahoma climate by incorporating principals of natural energy conservation into the design.

The house was nominated as the first example of Miesian International Style in Oklahoma. The National Register generally does not recognize properties until they are 50 years old. The Jones House was determined to be exceptionally

significant for its influence on the later work of Murray Jones Murray and for its role in Oklahoma architecture. The nomination was prepared by Jan Jennings, Associate Professor at Cornell University.

Two houses designed by noted Oklahoma architect Bruce Goff were added to the National Register on December 13, 2001. The Donald Pollock House in Oklahoma City and the Eugene Bavinger House in Norman were listed for their exceptional significance in the body of Goff's work.

The Pollock House was constructed in 1957 and is noted for its interlocking geometry and its use of materials. The Pollock House is one of Bruce Goff's most innovative designs, modest in scale but distinct in its composition. The interlocking geometry creates a sawtooth configuration for the roof, a feature that is enhanced over the covered patio by the use of translucent fiberglass. The house sparkles like a multifaceted gem in its otherwise typical Oklahoma City neighborhood.

The Eugene Bavinger House, located in Norman, is easily Goff's most recognizable extant creations. The design of this house is based on a helix, with a spiral form supported by a central mast. Natural stone and glass cullets are features of the walls, enhancing this house's reputation as the seminal work of Goff's "organic" philosophy. The Bavinger House, finished in 1955, is recognized nationally and internationally as one of Goff's finest designs and in 1987 was awarded the prestigious 25 Year Award from the American Institute of Architects. The house was listed in the National Register at the national level of significance as the signature design of a master architect, Bruce Goff.

Both the Pollock and Bavinger houses were nominated to the National Register of Historic Places under a historic context document titled "Resources Designed by Bruce Goff in Oklahoma." Both this context and the nominations were prepared by Arn Henderson, a professor in the School of Architecture at the University of Oklahoma.

For more information on these or other National Register properties in Oklahoma, contact Jim Gabbert at (405) 522-4478 or via E-mail at [jgabbert@ok-history.mus.ok.us](mailto:jgabbert@ok-history.mus.ok.us).

---

## SHPO offers grants for National Register nominations

The Oklahoma Historical Society, State Historic Preservation Office (SHPO) receives an annual allocation from the U.S. Department of the Interior's Historic Preservation Fund (HPF) for conduct of the National Register Programs.

The SHPO has set aside \$10,000 from the FY 2002 HPF award to tribal governments for matching grants for preparation of National Register of Historic Places nominations. This special grant program is designed to encourage nomination of

individual properties significant in the culture and history of Native Americans in Oklahoma to the National Register, increasing the number of Oklahoma's valuable archeological and historic resources that can benefit from this special designation. This activity is identified as a priority in *Tomorrow's Legacy: Oklahoma's Statewide Preservation Plan*. The only eligible applicants for this special grant program are Oklahoma's tribal

(continued on pg. 5)

## Oklahoma Properties (cont.)

governments. Completed applications for Round I must be received by May 3, 2002, and July 3, 2002, for Round II.

For everyone else the deadline for Round II is June 1. The grant funds are from the SHPO's FY 2002 Historic Preservation Fund allocation from the U.S. Department of the Interior and are for the purpose of retaining a professionally qualified consultant to

prepare individual property nominations to the National Register of Historic Places. The maximum grant amount is \$750. Applicants must provide a cash match from a nonfederal source. The required match for a \$750 grant is \$500. Eligible applicants include nonprofit organizations, tribal governments, and local or state government agencies. To request an application packet or for further information, contact the SHPO at (405) 521-6249.

## Centre Theater preservation and construction connections

The new museum design of the Oklahoma City Museum of Art integrates elements of the 1947 Centre Theater with new construction. The Theatre's canopy was rebuilt and its concept adapted to the south façade's design. The rebuilt original ticket booth will serve visitors entering the Museum's east entrance.

Window grilles, stairs, and balcony rails of the Centre Theater have been restored and will be reinstalled.

A new curved equipment penthouse façade on the roof is finished with ribbed clear aluminum to match materials used in the original theater construction. The black cast stone base, a design element recalling the black marble from the Centre Theater, has been used on the south façade. New theater restrooms and seating utilize colors found in color chips retrieved during demolition and site preparation.

## Walnut Avenue Viaduct update

The Walnut Avenue Viaduct in Oklahoma City is on track for a complete restoration. Earlier this year the Oklahoma City Council approved a contract for the engineering of the structure. The engineer is working with a historic preservation consultant to assure any changes to the 1935 structure will not alter its aesthetic integrity.

The roadbed will be entirely replaced, but the damaged stairs, balustrades, and piers will be repaired except in areas where they have been

destroyed.

One of the original light fixtures was located when an Oklahoma City resident called to inform a longtime supporter of saving the bridge that she had put the fixture up in her yard about 30 years ago. As a result of this call, new replicas can be created to adorn the concrete structure. At this time there is no solid date set for the grand re-opening of this historic structure.

## Preservation Web sites and Listserves

As you may know the website of Preservation Oklahoma, Inc., is now operational at [www.preservationoklahoma.org](http://www.preservationoklahoma.org). Please check it out and comment what you would like to see here in the future. Visit the State Historic Preservation Office Web site at [www.ok-history.mus.ok.us](http://www.ok-history.mus.ok.us). Click on "Preservation" and find basic information about the SHPO's programs, including the complete text of *Oklahoma's National Register Handbook* that contains a current listing of Oklahoma's listed properties.

Recently added to the Web site are *Tomorrow's Legacy: Oklahoma's Statewide Preservation Plan* and the form and instructions used to obtain the SHPO's preliminary opinion of a property's National Register eligibility. **Please subscribe to the SHPO'S listserv as well.** To subscribe send an E-mail message to [listproc@onenet.net](mailto:listproc@onenet.net), leave the subject area blank. Type in the text area: subscribe okshpo "your first and last name." Send the message in plain text. Consult <http://listproc@onenet.net> if you need help.

In addition the University of Nevada, Reno's Heritage Resources Management maintains a listserv for additional networking and problem solving opportunities for those interested in

archeology, cultural resources, historic preservation, museum, and tribal issues. To subscribe to the CRMED listserv send an E-mail to [Majordomo@unr.edu](mailto:Majordomo@unr.edu), the message of the E-mail should contain the single line: Subscribe crmed

A new compilation of information on the impact of telecommunications and broadcast towers has been added to DSRConsulting's Web site. Preservation professionals and community groups will find the site and its links useful when faced with protecting historic resources from tower proliferation. The Web site address is <http://davidsr01.home.mindspring.com/telecom>.

The latest sprawl study released by the Brookings Institution Center on Urban and Metropolitan Policy examines whether federal spending has benefitted inner cities or suburban areas, using Chicago and its suburbs as a case study, available at [www.brookings.edu/es/urban/publications/perskyexsum.htm](http://www.brookings.edu/es/urban/publications/perskyexsum.htm)

Also check out the new website of the African American Heritage Preservation Foundation at [www.aahpf.org](http://www.aahpf.org). These are just some examples of thousands of preservation related Web sites that currently exist and can provide important informational resources. Just search and find more.

# New & Renewed Memberships

## \$15 – Senior/Student

Curtis Long, *Tulsa*  
Joe Anthis, *Oklahoma City*

## \$25 – Individual/Family

Wayland Bowser, *Norman*  
Orpheum Theatre, *Okmulgee*  
Elizabeth Durkee, *Ponca City*  
Todd Scott, *Oklahoma City*  
Mr. & Mrs. John Thompson, *El Reno*  
Mr. & Mrs. R.L. Ferguson, *Midwest City*  
Edna & Claude Havens, *Bartlesville*  
Janice Nicklas, *Tulsa*  
Emily Warner, *Tulsa*  
Blanche Hudson, *Asher*  
James Bond, *Tulsa*  
Mary Warner, *Tulsa*  
Dr.&Mrs. James Dunagin, *McAlester*  
Daneil Lawrence, *Norman*  
Kathleen Page, *Tulsa*  
Pat Ernst, *Drumright*

## \$40 – Family

The Williams Companies, Inc., *Tulsa*  
(employer matching share)  
**\*Ask your employer about matching your donation to Preservation Oklahoma**

## \$50 – Organization

AIA Central Oklahoma, *Oklahoma City*  
Okmulgee Main Street, Inc., *Okmulgee*  
Preservation El Reno, Inc., *El Reno*  
Shortgrass Country Museum, *Sayre*

## \$100 – Sponsor

Dr. Theresa M. White-Mullen & Charles Mullen, *Norman*  
Sikes Abernathie Architects, P.C., *Tulsa*  
FlintCo Constructive Solutions, *Tulsa*  
City of Pawnee, *Pawnee*

## \$250 – Patron

Phil Kliewer, *Cordell*  
David Huey, *Tulsa*  
Leslie & Cliff Hudson, *Oklahoma City*

## \$1000 – Heritage Club

Loughorn Pipeline, The Williams Companies, Inc., *Tulsa*  
Leslie & Cliff Hudson, *Oklahoma City*



# Battlefield acquisition grants

*Preservation Oklahoma News*, the newsletter of Oklahoma's historic preservation community, is published quarterly as a joint project of Preservation Oklahoma, Inc., and the Oklahoma Historical Society, State Historic Preservation Office.

All correspondence, materials, or address changes should be sent to: Preservation Oklahoma, Inc., 120 N. Robinson, Suite 1408, Oklahoma City, OK 73102.

**Editors:**

**Trent Margrif**, Executive Director  
Preservation Oklahoma, Inc.  
(405) 232-5747

**Melvena Heisch**, Deputy State Historic Preservation Officer  
Oklahoma Historical Society  
(405) 522-4484

The activity that is the subject of this publication has been financed in part with federal funds from the National Park Service, Department of the Interior. However, the contents and opinions do not necessarily reflect the views or policies of the Department of the Interior, nor does the mention of trade names or commercial products constitute endorsement or recommendations by the Department of the Interior.

This program receives financial assistance for identification and protection of historic properties. Under Title VI of the Civil Rights Act of 1972, the U.S. Department of the Interior prohibits discrimination on the basis of race, color, national origin, or handicap in its federally assisted programs. If you believe you have been discriminated against in any program, activity, or facility as described above, or if you desire further information, please write to: Office of Equal Opportunity, U.S. Department of the Interior, Washington, DC 20240.

The National Park Service's American Battlefield Protection Program (ABPP) announces the availability of funds from the Land and Water Conservation Fund to help States and local communities acquire and preserve our nation's threatened Civil War Battlefields, as authorized by the FY 2002 Department of Interior Appropriations Act (Public Law 107-63).

The \$11 million available for matching grants will be administered by the ABPP and awarded through a competitive process over three years (fiscal years 2002 through 2004). Each grant requires a dollar-for-dollar non-Federal match. Grants are available for the fee simple acquisition of land, or for the acquisition of permanent, protective interests in land, at Civil War Battlefields

listed in the Civil War Sites Advisory Commission's (CWSAC) 1993 *Report on the Nation's Civil War Battlefields*.

Higher consideration will be given to proposals for acquisition at battlefields defined as Priority 1 or 2 sites in the CWSAC Report. The CWSAC Report and a listing of battlefields' priority status can be found at the ABPP's Web site at [www2.cr.nps.gov/abpp/priority.htm](http://www2.cr.nps.gov/abpp/priority.htm). Each proposal should include CWSAC Priority Listing and Map, threat to the battlefield, ability to secure non-federal match, and immediacy of acquisition. For Guidelines, application materials, or more information please contact Paul Hawke, Chief, American Battlefield Protection Program, at 202-343-1005.

## Civil War sites in Oklahoma

There were additional Civil War battles in Indian Territory but of the seven federally recognized Civil War sites in Oklahoma, two are currently protected, Cabin Creek and Honey Springs. Middle Boggy, Round Mountain, Old Fort Wayne, Chustenhlah, and Chusto-Talasa are considered not to be currently protected. CWSAC battle summaries for Oklahoma can be found at <http://www2.cr.nps.gov/abpp/battles/OKmap.htm>

The Civil War Preservation Trust is America's largest non-profit organization devoted to the preservation of our nations endangered Civil War battlefield lands. The Trust also promotes educational programs and heritage tourism initiatives to inform the public about the war and the fundamental conflicts that sparked it. More

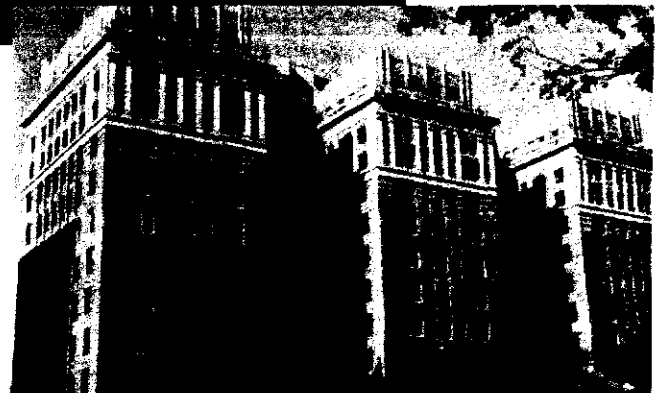
information can be found at [www.civilwar.org](http://www.civilwar.org).

The Civil War Preservation Trust has given \$62,500 towards the preservation of 184 acres at the site of the largest battle in Indian Territory, Honey Springs. Honey Springs Battlefield near Rentiesville is an Oklahoma Historical Society historic site. Take the Checotah/Rentiesville exit off US HWY 69 (approx. 2-1/4 miles north of I-40); then take Business 69 north 1-1/4 miles to Rentiesville Road; go east two miles to edge of battlefield and follow signs to the monuments and visitors center.

For more information on the site and upcoming events please contact Superintendent Ralph Jones at [ralphjones@ok-history.mus.ok.us](mailto:ralphjones@ok-history.mus.ok.us), (918) 473-5572



*The WPA-built  
Paunee Bathhouse*



*The Skirvin Hotel in  
Oklahoma City*

6

# Three new Main Street communities added to state program

The Governor's Special Assistant for Economic Development, Russell Perry, and Ron Bussert, executive director of the Oklahoma Department of Commerce, announced on March 12 that Claremore, Hobart and the Eastside Capitol Gateway business district in Oklahoma City have been named as Oklahoma's 2002 Main Street Communities.

The Oklahoma Main Street program is a comprehensive revitalization program that provides communities with tools to improve their historic central and neighborhood business district areas.

"I am pleased to add these outstanding Oklahoma communities to the very successful Main Street roster," said Perry.

Oklahoma Main Street Center Coordinator Les

Hall said the newly-designated Main Street communities will receive technical and design assistance from the Oklahoma Main Street Center staff. "Claremore, Hobart and Eastside Capitol Gateway will also receive leadership training for their program managers and boards of directors, as well as training in organization, promotion, design and economic restructuring," said Hall. Each community is responsible for raising its own operating budget.

For more information about the Oklahoma Main Street Program, please contact the Oklahoma Main Street Center at (405) 815-5171 or at [mainstreetstaff@odoc.state.ok.us](mailto:mainstreetstaff@odoc.state.ok.us). Visit the Main Street Web site at <http://www.odoc.state.ok.us/mainstreet> for more information.

- Claremore
- Hobart
- Eastside Capitol Gateway in OKC

## MetaFund

MetaFund is a non-profit community development financial institution and venture capital firm, funded by Oklahoma Banks, that lends to and invests in financially viable businesses and projects that benefit Oklahoma communities. With its broad mission, \$10 million in capital, large network of investors and partners, and relatively unique investment structures, MetaFund can help businesses, banks, and communities obtain funding not possible otherwise. MetaFund's primary investment targets are start-ups, expansions and buy-outs of small and large businesses, urban & rural development, and single & multifamily housing. This can include historic preservation and rehabilitation projects. Learn more about MetaFund at their Web site, [www.MetaFund.org](http://www.MetaFund.org), or call them at (405) 949-0001.



## Become a Member of the Statewide Preservation Network

Preservation Oklahoma's mission is to encourage the preservation of Oklahoma's historic places. Our strength lies in the working partnerships we have forged with people throughout Oklahoma. We welcome all people and organizations who care about the preservation of our historic and cultural resources. To join, complete the form below and send with payment to: Preservation Oklahoma, Inc., 120 N. Robinson, Suite 1408, Oklahoma City, OK 73102

Name \_\_\_\_\_

From (if gift) \_\_\_\_\_

Address \_\_\_\_\_

City \_\_\_\_\_ State \_\_\_\_\_ Zip \_\_\_\_\_

Phone \_\_\_\_\_ E-mail \_\_\_\_\_

If organizational membership, how many members in your organization? \_\_\_\_\_

Savings Club \$1,000  
 Sustaining \$500  
 Patron \$250  
 Sponsor \$100

Organization \$50  
 Indiv/Family \$25  
 Senior/Student \$15

Preservation Oklahoma, Inc., is a 501(c)(3) organization. Membership contributions are tax deductible.

**JOIN PRESERVATION OKLAHOMA NOW!**

# BOARD OF DIRECTORS

**Dan McMahan, Altus**  
*President-Elect*

**Jo Meacham, Norman**  
*Vice President*

**Susan Guthrie Dunham, OKC**  
*Treasurer*

**Bill Gumerson, OKC**

**Dave Huey, Tulsa**

**Hon. Phil Kliewer, Cordell**

**Ralph McCalmont, OKC**

**Roger Rinehart, El Reno**

**Dr. Joe Watkins, Anadarko**

**Barry Williamson, Norman**

## Low-interest loan pools across Oklahoma

The following is a compilation of the Revolving Loan Fund, Low Interest Loan Program of Preservation Oklahoma, Inc. Low interest loans are available for the qualified rehabilitation of historic properties at all MidFirst bank locations statewide, some BancFirst locations, and additional local banks. In addition, several Main Street communities have low-interest loan pools for commercial properties in their defined areas.

These include Ardmore, Durant, Miami, Okmulgee, Perkins, Perry, Sayre, and Shawnee.

Finally, historic preservation is a project area of the nine Resource Conservation & Development areas across the state. They cover nearly every county in Oklahoma and are willing to assist with historic preservation projects if economically viable, and also have available low interest loan pools. The RC&D program is a U.S. Department of Agriculture effort. Many agencies contribute to the success of the program and the Natural Resources Conservation Service administers the program. The organizational purpose of RC&D is the conservation, development and utilization of natural resources to improve the general level of economic activity and to enhance the environment and

standard of living in the RC&D area. For more information regarding the specific RC&D in your area, go to <http://www.icok.net/~omrcandd/State/index3.html>

Here is the list of counties that have available low interest loan pools through Preservation Oklahoma, Inc., or have a similar program that would make low interest loans likely possible:

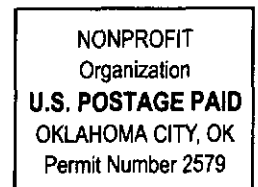
Beckham, Bryan, Caddo, Canadian, Carter, Cherokee, Choctaw, Cleveland, Craig, Custer, Jackson, Kingfisher, Lincoln, Logan, Love, McClain, Marshall, Murray, Noble, Oklahoma, Okmulgee, Ottawa, Payne, Pottawatomie, Seminole, Texas, Tulsa, Washita, Woodward.

The eventual goal is to have an available loan pool for all Oklahoma counties but with the cooperation of the nine RC&Ds across the state there should be available low-interest loans for any community based preservation project in the state of Oklahoma that is economically sound.

Please contact Preservation Oklahoma, Inc., if you would like more information regarding low interest loans for the qualified rehabilitation of historic properties.



**Preservation Oklahoma, Inc.**  
120 N. Robinson, Suite 1408  
Oklahoma City, OK 73102  
[www.preservationoklahoma.org](http://www.preservationoklahoma.org)



**ADDRESS SERVICE REQUESTED**