



www.preservationoklahoma.org

Vol. 10, No. 2

OKLAHOMA NEWS



www.ok-history.mus.ok.us

October 2003

INSIDE ...

PAGE 2

- A Letter From the President of Preservation Oklahoma

PAGE 4

- Muskogee Becomes Oklahoma's 14th CLG

PAGE 5

- Seifert Joins PO as Executive Director
- Laura Bush Announces New Preserve America Community Designations, Presidential Awards
- Membership Form

PAGE 6

- New Surveys for City of Frederick and New Deal Public Art
- State Tour Group Finalist in Smithsonian Awards
- Recent Donations

PAGE 7

- Hemdon Archeological Site Investigations

PAGE 8

- SHPO to Present Four Workshops

New Listings in National Register

by Jim Gabbert
SHPO, Architectural Historian

A bridge, a dam, a dome, a dance hall, and a golf course are among the most recent Oklahoma properties listed in the National Register of Historic Places. The National Register is the official list of buildings, sites, structures, objects, and districts that are significant in our nation's history.

Twelve properties from 10 communities in Oklahoma were recognized on September 4, 2003, by the Department of the Interior. The newly-designated historic properties are:

- **Boulder-on-the-Park**, located in Tulsa. Originally constructed as Holland Hall school in 1923, this building became the new home of KTUL Radio in 1947. The building was remodeled expressly to function in its new capacity as a media center. KTUL was the first radio station to move out of the cramped downtown area.



Boulder-on-the-Park, Tulsa

- **Cain's Dancing Academy (aka Cain's Ballroom)**, located in Tulsa. This storied old building has long held a special place in music history. From 1935 to 1942, it was the home of Bob Wills, the King of Western Swing. With his daily radio broadcasts and live performances,

Wills was instrumental in popularizing this new genre for music. Even after Wills' death, Cain's Ballroom has been the heart of music entertainment in Oklahoma.



Cain's Dancing Academy, Tulsa

- **Citizens State Bank (aka the Gold Dome)**, located in Oklahoma City. The Gold Dome bank has long been a landmark in Oklahoma City. Its gleaming, anodized geodesic dome was the result of a collaboration between the design firm of Bailey, Bozalis, Dickinson, & Roloff and Kaiser Aluminum corporation. BBDR incorporated a stock Kaiser Dome plan, based on the designs of Buckminster Fuller, into a striking



Citizens State Bank, Okla. City

(cont. on page 2)

Preservation Oklahoma News, the newsletter of Oklahoma's historic preservation community, is published quarterly as a joint project of Preservation Oklahoma, Inc., and the Oklahoma Historical Society, State Historic Preservation Office.

All correspondence, materials, or address changes should be sent to: Preservation Oklahoma, Inc. 120 N. Robinson, Suite 1408 Oklahoma City, OK 73102.

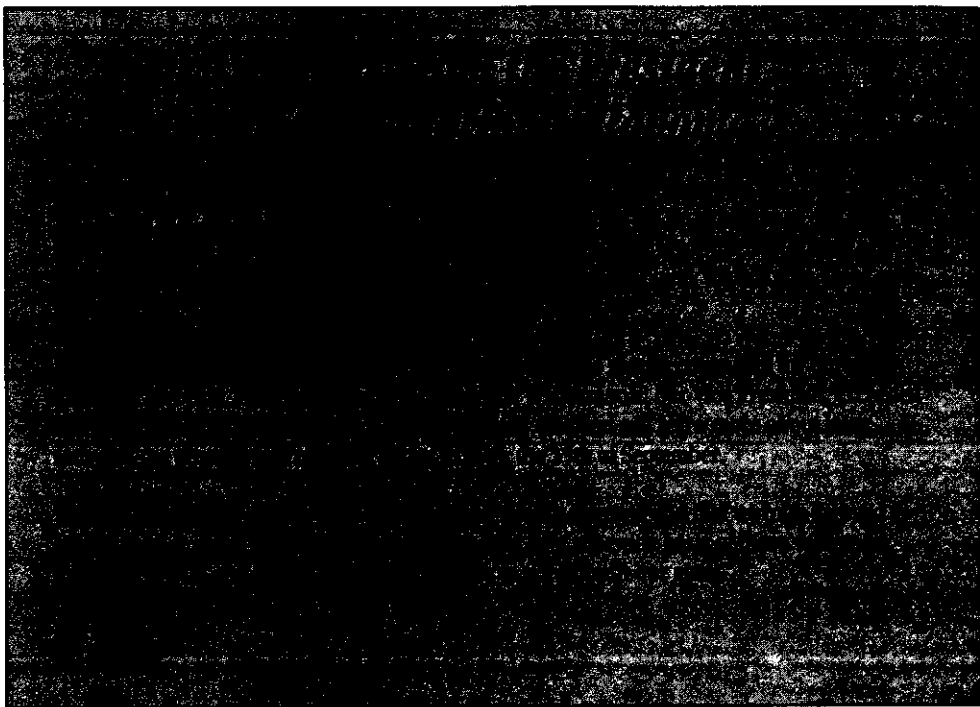
Editors:
Melvina Heisch, Deputy State Historic Preservation Officer
Oklahoma Historical Society
(405) 522-4484

Heather Seifert, Executive Director
Preservation Oklahoma, Inc.
120 N. Robinson, Suite 1408
Oklahoma City, OK 73102
(405) 232-5747

The activity that is the subject of this publication has been financed in part with federal funds from the National Park Service, Department of the Interior. However, the contents and opinions do not necessarily reflect the views or policies of the Department of the Interior, nor does the mention of trade names or commercial products constitute endorsement or recommendations by the Department of the Interior.

This program receives financial assistance for identification and protection of historic properties. Under Title VI of the Civil Rights Act of 1972, the U.S. Department of the Interior prohibits discrimination on the basis of race, color, national origin, or handicap in its federally assisted programs. If you believe you have been discriminated against in any program, activity, or facility as described above, or if you desire further information, please write to: Office of Equal Opportunity, U.S. Department of the Interior, Washington, DC 20240.

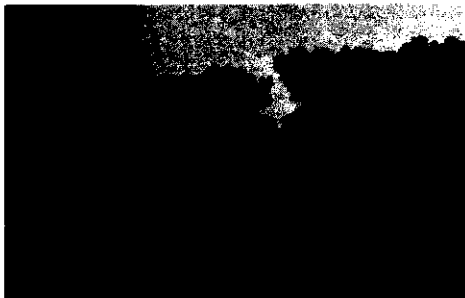
2



New Listings (cont.)

new home for Citizens State bank in 1958. This radical new design set the gold standard for bank design in Oklahoma City. Soon, other banks began to construct modern facilities outside of the city's core utilizing designs that departed radically from the staid, formalism that marked bank architecture for the previous century. Threatened with demolition, the Gold Dome has been rescued through the efforts of individuals and organizations who wished to see this landmark building live on for the future.

• **Dornick Hills Country Club**, located in Ardmore. Dornick Hills was the first, and most influential, golf course designed by noted golf architect Perry Maxwell. Constructed first in 1915 and expanded to 18 holes in 1923, Dornick Hills was the premier golf course in the Southwest and one of the first in the region to utilize grass greens. Maxwell's design philosophy of allowing nature to dictate the layout of the course and to defend par on the greens was born at Dornick Hills. He later went on to work on such noted courses as Southern Hills, Colonial, and Augusta National.



Dornick Hills Country Club, Ardmore

• **Pawnee Municipal Swimming Pool and Bathhouse**, located in Pawnee. This

Depression-era complex is one of the most spectacular public works projects created by the WPA in Oklahoma. Over a period of six years, the relief workers created a natural swimming pool and a series of spectacular stone terraces leading uphill to a refined, balconied, stone bathhouse. Abandoned for years, the City of Pawnee has recently rehabilitated the complex, returning it to its former use and glory.



Pawnee Municipal Swimming Pool and Bathhouse, Pawnee

• **Pensacola Dam**, located between Disney and Langley. A spectacular example of engineering design, the Pensacola or Grand River Dam, is the longest multiple-arch concrete dam in the United States. It is also one of the last of its kind built in North America. Consisting of 51



Pensacola Dam, between Disney and Langley

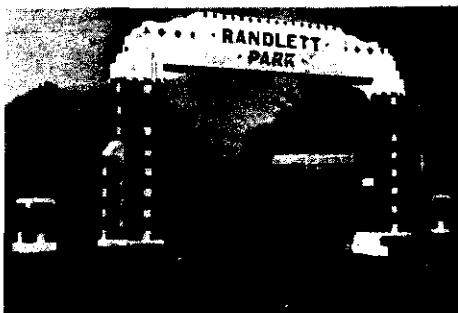
ches stretching over 4,200 feet, and towering 10 feet above the Grand River, the Pensacola Dam is the culmination of a half-century of dam design and debate. The elegant structure of the multiple arch dam was considered by many to be unsafe, but time has proven otherwise.

• **Perry Courthouse Square Historic District**, located in Perry. Centered on the Noble County Courthouse and Government Square, the district is composed of 132 resources that reflect the growth and development of commerce in Perry. As the center for commerce in Noble County, and as a shipping point on two rail lines, Perry developed a large commercial district early in the 20th century. The buildings, structures, and objects that comprise the district represent all periods of commercial development in town. From the Joseph Foucart designed bank to the early Marland triangle service station to the original home of Ditch-Witch, the Perry Courthouse Square Historic District reflects the continued success of this Main Street community.



Perry Courthouse Square Historic District, Perry

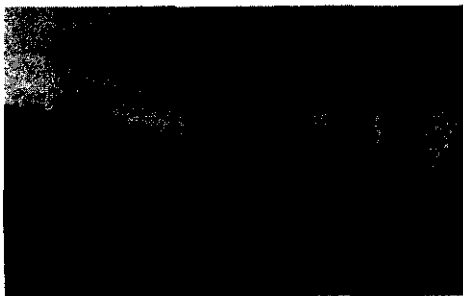
• **Randlett Park**, located in Anadarko. Located on the banks of the Washita River on the east side of Anadarko, Randlett Park has long played an important role in the civic life of the town. It was first the location of a dam and powerhouse, providing electricity to the town. According to landscape plans developed by J.H. Craven in 1917, the park grew to include a number of recreational amenities, including a *round pool built in 1926. During the Depression, VPA and NYA workers created a new look to the park with entrance gates, stone walls, and facilities like the croquette courts.*



Randlett Park, Anadarko

• **Strother Memorial Chapel**, located in Seminole. Built in memory of oilman O.D. Strother, father of the great Seminole Oil Field, his chapel is the focal point of Maple Grove

Cemetery. It is an excellent example of the Late Gothic Revival style of architecture. Executed in stone, the chapel features crenellated towers at each corner. Used for equipment storage for many years, the chapel has recently been rehabilitated and returned to its original use by a dedicated group of volunteers with the support and backing of the City of Seminole.



Strother Memorial Chapel, Seminole

• **Tulsa Fire Alarm Building**, located in Tulsa. A resplendent example of the Art Deco style, the Tulsa Fire Alarm Building was designed by Fredrick Kershner to house the City of Tulsa's Gamewell Fire Alarm system. Completed in 1934, the building features an octagonal central section. The buff brick walls are highlighted by intricate terra cotta panels, influenced by Mayan art. Empty for years due to repeated flooding, the Tulsa Fire Alarm Building has recently been purchased by the Oklahoma Lung Association. The OLA intends on breathing new life into the building by moving in its headquarters.



Tulsa Fire Alarm Building, Tulsa

• **US Highway 77 Bridge over the Canadian River**, located between Lexington and Purcell. Constructed in 1939, this elegant deck truss bridge towers over the Canadian River. It is over 3,600 feet in length, the third-longest in



US Hwy. 77 bridge over Canadian River

Oklahoma's most recent listings to the National Register of Historic Places

- Boulder-on-the-Park, *Tulsa*
- Cain's Dancing Academy, *Tulsa*
- Citizens State Bank, *Oklahoma City*
- Dornick Hills Country Club, *Ardmore*
- Pawnee Municipal Swimming Pool and Bathhouse, *Pawnee*
- Pensacola Dam, *between Disney and Langley*
- Perry Courthouse Square Historic District, *Perry*
- Randlett Park, *Anadarko*
- Strother Memorial Chapel, *Seminole*
- Tulsa Fire Alarm Bldg., *Tulsa*
- US Hwy. 77 Bridge over the Canadian River, *between Lexington and Purcell*
- Verdigris Club/Skelly Lodge, *near Catoosa*

Help us reach our goal of having at least five listings from each of Oklahoma's 77 counties by Statehood Day, November 16, 2007.

A local preservation ordinance is perhaps the most effective tool available to a city for preservation of its historic buildings, sites, structures, commercial districts, and neighborhoods.

4

New Listings (cont.)

Oklahoma. When built, it was the largest single contract ever let by the Oklahoma Department of Transportation and represented the political tug-of-war between local and state officials and the federal government. Local interests held sway, and the bridge was allowed to remain as a link between Purcell and Lexington rather than being relocated to the north.

- **Verdigris Club/Skelly Lodge**, located near Catoosa. This "chalet-style" hunting lodge was constructed around 1931 by a group of



Verdigris Club/Skelly Lodge, near Catoosa

prominent men from Tulsa for use as an exclusive retreat. Members included Waite Phillips, Tom Slick, Walter Urschel, and William Skelly. Originally, the club was surrounded by 4,000 acres of wild land, stocked with game, and featuring a private landing strip. Eventually, interest waned and the club disbanded. The lodge was purchased by Skelly and used as his private retreat for years.

For further information on these or other National Register properties, contact **Jim Gabbert** at the State Historic Preservation Office either by telephone at (405) 522-4478 or e-mail at jgabbert@ok-history.mus.ok.us.

The SHPO would like to thank our preservation partners in their continued efforts to recognize Oklahoma's historic resources. We call on these partners to help us reach our goal of having at least five listings from each of Oklahoma's 77 counties by Statehood Day, November 16, 2007. Counties with fewer than five listings include Adair, Coal, Cotton, Dewey, Greer, Harmon, Jackson, Love, McClain, Major, Nowata, and Woodward. Please join us in celebrating our state's centennial by recognizing its historic resources.

Muskogee Becomes Oklahoma's 14th CLG

*by Glen Vaughn-Roberson
Director, Certified Local Governments
program for Oklahoma*

On June 10, the Department of the Interior approved the State Historic Preservation Office's (SHPO) recommendation that the City of Muskogee become the fourteenth Oklahoma municipality to join the Certified Local Governments Program (CLG). As a CLG, Muskogee will now have a direct role in the National Register nomination process, assume certain SHPO responsibilities, and receive federal matching funds from the SHPO's CLG fund.

Muskogee joins Anadarko, Ardmore, Cordell, Enid, Grandfield, Guthrie, Norman, Oklahoma City, Okmulgee, Ponca City, Sapulpa, Tahlequah, and Tulsa in the CLG program.

To qualify for CLG status, a local government must enforce a local historic preservation zoning ordinance, maintain a qualified local review commission, and satisfy the terms of the Certification Agreement entered into with the SHPO. Under their local preservation ordinances, cities require owners of properties located in a city-designated historic district to obtain Certificates of Appropriateness from the local historic preservation commission for work such as rehabilitation, demolition, or new construction.

A local preservation ordinance is perhaps the most effective tool available to a city for preservation of its historic buildings, sites,

structures, commercial districts, and neighborhoods.

As a member of the CLG program, Muskogee can utilize federal matching funds from the SHPO to undertake projects to strengthen its local preservation program.

Conducting surveys to identify historic properties, preparing and reviewing National Register nominations, and publishing educational materials about community history are just three of a wide range of activities that help develop local preservation efforts. Muskogee has already designated two local historic districts under its ordinance, including Kendall Place (roughly bounded by 11th Street, 16th Street, Okmulgee, and Elgin) and Founders Place (roughly bounded by 12th Street, 17th Street, Martin Luther King and Cort, and the City could utilize CLG funds to publish the design guidelines for these districts.

For cities seeking further information about the CLG program, contact Glen Vaughn-Roberson, Director of the Certified Local Governments program for Oklahoma, at (405) 521-6387 or at gvaughn-roberson@ok-history.mus.ok.us.

Also, the SHPO staff will present a half-day workshop on the CLG program on December 3 (see the *Calendar of Events and article on SHPO workshops in this issue*).

Seifert Joins PO as Executive Director

Heather Seifert recently began her position as Executive Director of Preservation Oklahoma. From 1998-2003, Heather served as Executive Director of Preservation Greensboro where she managed a citywide non-profit organization. Her responsibilities included a National Historic Landmark house museum, an onsite rental facility and an all-volunteer salvage operation.

Heather also served on the City's Historic Preservation Commission and Comprehensive Planning Committee. While in Greensboro, her greatest accomplishments included the preservation of a late-nineteenth century house renovated with private funds, successfully marshaling efforts to renovate James B. Dudley High School for continued use as a public high school, and acted as advocate for the renovation

of numerous historic properties including the renovation of World War Memorial Stadium.

Heather also served as Director of Moultrie-Colquitt Main Street Program in Moultrie, Georgia from 1992 to 1998. During her tenure with the Main Street Program, Downtown Moultrie saw a net increase of 25 business, and nearly \$4 million in public/private monies spent. Renovation projects Heather was involved with included the renovation of the Colquitt Theatre, the Colquitt Hotel, the historic jail, the county court house, numerous commercial buildings, plus Downtown Moultrie's first "loft living."

Heather has her Bachelors in Applied Art and Masters in Public Administration. We welcome her to Oklahoma.

Become a Member of the Statewide Preservation Network ...

Preservation Oklahoma's mission is foster the preservation of historic buildings and sites in Oklahoma through advocacy, education and technical and financial assistance.

As a member, you become a part of a vital network of individuals and organizations working to rebuild communities, strengthen neighborhoods, restore historic properties ... you become a part of Oklahoma's future.

To join, complete this form and send to: Preservation Oklahoma, Inc. 120 N. Robinson, Suite 1408 Oklahoma City, OK 73102.

Name _____

From (if gift) _____

Address _____

City _____

State _____ Zip _____

Phone _____

E-mail _____

- Heritage Club - \$1,000
- Sustaining - \$500
- Patron - \$250
- Sponsor - \$100
- Organization - \$50
- Individual/Family - \$25
- Senior/Student - \$15

Preservation Oklahoma, Inc., is a 501(c)(3) organization. Membership contributions are tax deductible.

Join Preservation Oklahoma today.

5

Laura Bush Announces New Preserve America Community Designations, Presidential Awards

MOBILE, AL – Mrs. Laura Bush today announced details of two new key components of the Administration's *Preserve America* initiative: the *Preserve America* Community designation and *Preserve America* Presidential Awards.

"*Preserve America* promotes cultural and natural preservation and encourages greater appreciation of our national treasures – from monuments and buildings to landscapes and main streets. President Bush and I want every American, especially our children, to discover and learn about our nation's heritage, a heritage our parents and grandparents bestowed upon us and that we continue to build upon. Mobile is a great example of a community that is using its past to build a better future," Mrs. Bush said.

Representatives of agencies that are partners in the White House initiative accompanied Mrs. Bush. They included the Department of the Interior, represented by Secretary Gale Norton, and the Advisory Council on Historic Preservation, represented by Chairman John L. Nau, III.

"The Interior Department is happy to take a leading role in support of the *Preserve America* initiative. This important White House program empowers citizens and local areas to work in partnership to protect the artifacts and historic sites that define us as a nation," Interior Secretary Norton said. "*Preserve America* is also an essential element to promote historic preservation and heritage tourism in communities across the country."

The announcement was made at the historic

Old City Hall in Mobile, a National Historic Landmark dating to 1857. The structure today is home to the Museum of Mobile, a marvelous example of appropriate adaptive reuse, but in the past it was both the City Hall on the upper floor and the Southern Market of Mobile on the lower floor, where vendors sold meat, fish, vegetables, and fruit. It also played a role in the city's military history.

"Old City Hall's history demonstrates public-private partnerships similar to those we encourage among modern day Americans. Public-private partnerships today preserve our heritage as an economic and cultural foundation for our future," said John L. Nau, III, chairman of the Advisory Council on Historic Preservation. "I would like to challenge communities through-out our great country to enhance their heritage tourism efforts by seeking *Preserve America* Community designation for their towns and cities, and by nominating outstanding preservation and development efforts for the new *Preserve America* Presidential Award."

The Department of Commerce is also a partner in the *Preserve America* initiative through its Economic Development Administration (EDA) grants program.

More information on *Preserve America*, including criteria, nomination, and application forms for the awards unveiled by Mrs. Bush today, can be found at www.PreserveAmerica.gov. The information can also be accessed at the White House, Department of Interior, Department of Commerce, and ACHP Web sites.

Upcoming ...

October 16

Rural Preservation

Cherokee Senior Citizens Building
Grand and 2nd - Cherokee, OK
7 pm

Presented by: Arri Henderson

Sponsored by: Cherokee Main Street
Preservation Oklahoma, Inc.
Oklahoma Humanities Council

November 17

Route 66 in Western Oklahoma

Route 66 Museum
2229 West Gary Boulevard - Clinton
7 pm

Presented by: Dr. Michael Cassity

Sponsored by: Route 66 Museum
Preservation Oklahoma, Inc.
Oklahoma Humanities Council

December 15

Community History and Identity

Public Library
404 N. Broadway - Broken Bow
Presented by: Dr. Cathy Ambler

Sponsored by: Main Street Broken Bow
Preservation Oklahoma, Inc.
Oklahoma Humanities Council

January 22, 2004

Oklahoma's Endangered Archeological Treasures

Sam Noble Oklahoma Museum of Natural History
Norman

Presented by: Dr. Robert Brooks

Details to follow.

February, 2004

Historic Properties of Tulsa's Petroleum Heritage

Presented by: Dr. Glen Vaughn-Roberson.

Details to follow.

New Surveys for City of Frederick and New Deal Public Art

This year's Historic Preservation Fund grant will help to support two new architectural/historic survey projects in Oklahoma.

Once again partnering with the Geography Department at Oklahoma State University, the State Historic Preservation Office will undertake a survey of the City of Frederick in Tillman County and a survey of New Deal Public Art across the state.

The Frederick survey will concentrate on identifying those individual buildings, sites, and structures that are eligible for inclusion in the National Register of Historic Places as well as identifying historic districts that warrant further study. Commercial, domestic, and public buildings will be evaluated and photographed and a historic context for the city will be completed. **Dr. Brad Bays** will be the principle investigator.

Dr. Alyson Greiner will be the investigator for a survey of New Deal Era Public Art. This statewide survey will document works of art created through various New Deal programs, including the Treasury Department Art Project, the Public Works of Art Project, and the WPA Art project. Original works of art will be documented and evaluated in their original settings and the building in which they are located will be evaluated.

The surveys, when completed, will help to broaden the knowledge and recognition of the state's many historic resources.

For more information on these or other survey projects, contact **Jim Gabbert** at the State Historic Preservation Office at (405) 522-4478 or e-mail at jgabbert@ok-history.mus.ok.us.

State Tour Group Finalist in *Smithsonian* Awards

Oklahoma Historical Black Town Tours has been named as one of three finalists in the *Smithsonian Magazine's* Sustainable Tourism Awards in the preservation category. The tours are responsible for generating increased revenue for local restaurants, hotels and other business.

Voting for the finalists will be available until October 31st. Cast your vote by going to <http://www.sustainabletourismawards.com/cgi-bin/voting.cgi>.

For more information on the tours, go to www.blacktownstour.com. or e-mail Cassandra Gaines at cassytours@geotec.net.

Recent Donations

MidFirst Bank, *Oklahoma City*

Patron

Hiram Champlin, *Enid*

Sponsor

Beck Associates Architects, *Oklahoma City*

Marilyn Branch, *Guthrie*

Jim and Ruth Anne Brown, *Oklahoma City*

Don and Sally Farrell, *Chandler*

John Mabrey, *Okmulgee*

Peter Walter, *Tulsa*

Organizational

Bartlesville Area History Museum, *Bartlesville*
Kay Todd, *Tulsa*

Lawton Arts and Humanities Council, *Lawton*

Maple Grove Cemetery Chapel Association,
Seminole

Shortgrass Country Museum, *Sayre*

Jonathan Woltz, *Weatherford*

Individual/Family

Sue and Howard Bowen, *Watonga*

Dr. Michael Cassity, *Broken Arrow*

Evelyn Davis, *Oklahoma City*

Barbara and William Dunn, *Stillwater*

Martha and LeRoy Fisher, *Stillwater*

John Fleming, *Oklahoma City*

Jim Gabbert, *Oklahoma City*

Jennifer Galvin, *Bartlesville*

Iva Lou Gibson, *Oklahoma City*

Heritage Research Company, *Ozark,*

Missouri

Jeanne Reed, *Poteau*

Senior/Student

Barbour Cox, *Altamonte Springs, Florida*

Phyllis Hagan, *Watts*

Jo Ellen Hayes, *Norman*

Wilma Jones, *Tulsa*

Charles Scott, *Guthrie*

Dennis Vaughn, *Oklahoma City*

Sandra Waldo, *Bartlesville*

6

Herndon Archeological Site Investigations

by Charles S. Wallis, Jr.
OK SHPO Historical Archeologist

The Herndon Site, 34Mc576, is an early, pre-allotment Choctaw Farmstead located in southeastern McCurtain County, Oklahoma. The site, believed to date from the 1830s/ 1840s period, is one of several Choctaw sites located on lands that the U.S. Forest Service exchanged with Weyerhaeuser Company in late 1996.

As part of the exchange program, the Forest Service is required to survey for, evaluate and record, possible historic structures and archeological sites that might be affected by the land exchange. This process has been ongoing for the past seven years, with September of this year marking the end of the assessment period. The investigations have been under the oversight and direction of Meeks Etchieson, Ouachita National Forest Heritage Program Manager.

Two hundred and fifty three archeological sites were documented within the 48,000 acre exchange tract which includes land parcels in both Oklahoma and Arkansas. Documented historic sites included early pre-allotment and post-allotment Choctaw home sites, Anglo-American farmsteads dating up until the mid-1930s, and locations of old saw mill sets and whiskey stills. Numerous prehistoric sites were identified and evaluated as well. The prehistoric sites varied in age from the early Archaic times up through the Late Prehistoric Period, or time when the region was inhabited by the ancestors of the modern day Caddo Indians. A number of the sites were determined through subsurface investigations to be eligible for listing in the National Register of Historic Places.

One of those sites is the Herndon site. The Herndon site is named after Quintus Herndon, an Intermarried White, allotted land in the area in 1904. As the early Choctaw farmstead dates some 60 years prior to the 1904 allotment, it is possible that Quintus Herndon had nothing to do with the site occupation. More likely, a second early-1900s through 1930s farmstead identified elsewhere on the property is the actual location of the Herndon homestead.

The Ouachita National Forest Heritage Resource Staff undertook an excavation project at the Herndon site in October 2002 in order to evaluate the site for its eligibility for inclusion on the National Register of Historic Places. The October 2002 investigations were conducted by use of the Forest Service's Passport In Time (PIT) program. The PIT program is a volunteer program that provides opportunities for the public to work with Forest Service heritage specialists on national forests and grasslands across the United States. The results of the 2002 evaluation suggested that the site was eligible for inclusion on the National Register.

Although protection in place is normally the preferred choice, the type of site and location ruled out this option. It was feared that the site's location would become known and unauthorized digging



and metal detecting would destroy the site's potential to yield important information on early Choctaw Removal Period settlement of the region. Consequently the site was scheduled for additional work and a mitigation plan was drawn up to accomplish that need. The latest investigations include this year's Oklahoma Anthropological Society, Spring Dig (reference figure), as well as one of the locations for training a group of college students from England, Scotland and Ireland who volunteered to help with excavations at this site as well as a nearby prehistoric Caddoan site. The latest investigations were conducted to record important information about the site prior to completion of the land exchange.

Investigation of the Herndon site turned up some interesting findings. As anticipated historic artifacts were recovered that identify this location as an early historic farmstead associated with the early Choctaw Removal Period. Ceramics and other artifacts recovered support a short term, late-1830/early-1840 use of the area. Of interest is the high ratio of Choctaw manufactured pottery wares compared to the more refined, imported European (mainly English) ceramic wares typically noted for this time period. Although this could indicate a more traditional or less acculturated Choctaw family, or perhaps even a less well to do family, the number of German silver ornaments, rings and silver scrap recovered during the investigations clearly argues against the family being one of the less well to do arrivals. The site occupants obviously were rather well off. The reason for the high ratio of Choctaw made pottery vessels compared to European manufactured wares remains an unanswered question, but could simply document a necessary of manufacturing locally made vessels for day to day use prior to the arrival of commercially made goods.

Although actual dwelling locations were not documented during the excavations, several subsurface pits or features were recorded along with traces of burned clay that could reflect evidence of mud cat chimneys. Possible locations for the primary dwellings however can still be suggested by artifact distribution patterns, low earth berms and the presence of two large pecan trees, not typical for the site setting.

Unauthorized digging and metal detecting would destroy the (Herndon) site's potential to yield important information on early Choctaw Removal Period settlement of the region.

Of interest is the high ratio of Choctaw manufactured pottery wares compared to the more refined, imported European (mainly English) ceramic wares typically noted for this time period. ... the site occupants obviously were rather well off.

7

BOARD OF DIRECTORS

Bill Gumerson, Oklahoma City
President
Barrett Williamson, Norman
Vice President
Roger Rinehart, El Reno
Treasurer
Heather Seifert, Oklahoma City
Executive Director

Jo Meacham, Okla. City
Bret Carter, Ponca City
Konrad Keesee, Okla. City
Julie Miner, Tulsa
Kathleen Page, Tulsa
Kay Wade, Guthrie
Cathy Amber, Ph.D., Tulsa
Stephen Boyd, Hobart
Cassandra Gaines, Muskogee

SHPO to Present Four Workshops

The State Historic Preservation Office (SHPO) will present its fall workshop series December 3-5 in the Shepherd Mall Activity Center, NW 23 and Villa, Oklahoma City.

Each of the four sessions is designed to provide detailed information about basic SHPO programs which will be helpful to government agency representatives, preservation professionals, owners of historic properties, and the general public.

The workshop schedule includes:

• **December 3 – 9:30am-12 noon**

State and Local Governments as Preservation Partners in Oklahoma: The CLG Program. This session details how city governments that enforce local preservation zoning ordinances can qualify to participate in this special program and receive federal matching funds from the SHPO.

• **December 3 – 1:30pm-4:30pm**

Guidelines and Tax Incentives for Rehabilitating Historic Buildings. Participants will learn about the special 20% federal investment tax credit for rehabilitation of income-producing buildings that are listed on or eligible for the National Register of Historic Places and what is required to obtain certification of project work.

• **December 4 – 9:30am-4:30pm**

The Section 106 Review Process: What It Is and How It Works. This workshop is designed for government agency representatives, preservation professionals, and others involved in the planning and execution of federally-funded, licensed, or permitted projects and will detail the step-by-step process to comply with Section 106 of the National Historic Preservation Act for these federal undertakings.

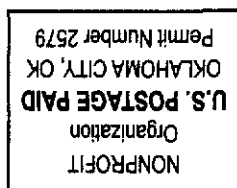
• **December 5 – 9:30am-4:30pm**

Working with the National Register of Historic Places. Preservation professionals, property owners, and concerned citizens will learn what the National Register of Historic Places is, what listing means, what qualifies a property for listing, and how to prepare acceptable nominations.

All four workshops are free and open to the public. However space is limited and will be available on a first-come basis. The deadline for registration is 5:00pm, Monday, December 1.

To register just contact **Shea Otely** at the SHPO by phone at (405) 521-6249, by FAX at (405) 947-2918, or by e-mail at sjotley@ok-history.mus.ok.us.

ADDRESS SERVICE REQUESTED



www.preservationoklahoma.org
Oklahoma City, OK 73102
120 N. Robinson, Suite 1408
Preservation Oklahoma, Inc.

