



Figure 22. Louis J. Umstead and Class, ca. 1925 (Mary Umstead Collection)

RACE RELATIONS AND THE COLOR LINE

Despite the city's overall population increase during this period, census information records a major decline in Enid's black residents, from 4.79 percent of the total population in 1910 to only 2.85 percent in 1920. In 1910 Enid counted 661 black residents among its 13,799 citizens; but, in 1920, the number had dropped to only 474 blacks while the city population increased to 16,576 (U.S. Census Bureau, 1910, 1920). The decline was dramatic. Although the exact cause of the reduction is unknown, it coincided with the rise of the Ku Klux Klan in the south, at a time when the Klan had its strongest grip on Oklahoma politics in particular. In the aftermath and disillusionment of World War I, a kind of pseudo-patriotism and inordinate fear of minorities swept the country resulting in a national Red Scare and the rise of the Ku Klux Klan. The Klan promised to rid the country of foreigners, Catholics, bootleggers and blacks—anyone who might threaten white Americans' livelihood.

Violence erupted throughout Oklahoma in towns and rural areas alike but the Tulsa race riot of 1921 stands out as the most devastating manifestation of racial hatred and fear in Oklahoma. In most cases, Klansmen staged marches through selected towns to intimidate blacks, Catholics and foreigners

and to bolster their own importance. According to a local newspaperman, hooded Klansmen rode the streets of Enid to discourage black aspirations in the town (Edson, 1988: 1). Several long-time black residents, including Hallie Nash and Estell Laster, recalled Klan activity in Enid during the 1920's. In a local television broadcast taped in 1995, Nash remembered the night the Klan closed down "Two Street" in an attempt to rid the city of vice. Estell Laster remembers seeing Klansmen in the city in 1927 when he first came to Enid. (Laster interview, 1997).

During this period, there appears to have been a concerted effort to move black institutions from their original locations within the Enid townsite to the new East Park Addition on the southeast. On August 24, 1920, Reverend Ferguson supervised moving the small frame building that served Enid's first black congregation on Broadway to its present location on East State Avenue, in the East Park Addition. The congregation and its building may have been in transition for some time and this might explain its absence from city directories following World War I. The former church property on Broadway became part of a public park that extended into Government Springs Park. In 1921, Booker T. Washington School, Enid's largest black school, was moved from its Government Springs Park site to the southeast corner of Wabash and East Fifth Street, in Block 14 of the East Park Addition. The move to a new, larger building caused great excitement in the community. Over 500 local residents and dignitaries attended the cornerstone and dedicatory program at the school in 1921. Among the assembled guests were the Honorable Roscoe Dungee, editor of *The Black Dispatch* and Dr. I.W. Young, ex-president of Langston University, who gave the speech. Like the Baptist Church, the former school site became part of the park and now contains the Cherokee Strip Museum.

Grayson Baptist Church and St. Stephen's African Methodist Episcopal Church remained on their original sites on East Market Avenue, but the move of influential institutions, particularly the closing of Douglas School and the move of Booker T. Washington School, helped determine the direction of future black residential development in Enid. From that time through the 1960s, the additions on Enid's southeast side became home to nearly all of Enid's black families.

It is not known whether the consolidation of black institutions and new residential districts in the East Park Addition was planned - either by whites or by blacks themselves - but intentional segregation of black communities was practiced in other cities in the south and in Texas and Oklahoma at that time. Civic leaders usually gathered informally to draw what was known as a "color line" along certain streets to mark racial boundaries within a city. They typically drew the boundaries to create a preferred development zone that included existing concentrations of black residents, but extended outward from the central city to encourage future development from the city. In nearly all cases where additional black institutions and residential clusters existed outside the zone, they were encouraged or induced to move within the zone. This often occurred when black school or church sites were located on desirable sites for commercial redevelopment. Where older black churches and schools needed major renovation or repairs, their leaders were sometimes offered new schools and churches "below the color line" in exchange for the preferred sites. At other times, buildings were found to be in violation of fire or other city codes and the properties were condemned. In Dallas, for example, tracts of former freedman villages in the central and northern sectors of the city were leveled in slum clearance operations during 1920s. Prominent churches and schools in those areas were moved or rebuilt in far south Dallas "below the color line" established by the mayor and city council in 1921. Nearly all subsequent black residential development in Dallas occurred within the boundaries of the "color line" for the following four decades.

While no official or written evidence of an overt "color line" strategy in Enid has been found, the removal of schools and churches from one part of town and their subsequent appearance in an area at the periphery of the city, along with the location of new housing starts for black families, follows a pattern familiar in cities throughout the country at that time. In an atmosphere charged with "Red" baiting and the resurgence of the Ku Klux Klan, and in the aftermath of the infamous Tulsa race riot of 1921, Enid's black citizens may have felt less vulnerable and better able to protect its citizens within the confines of a well-defined community.

An article in the *Black Dispatch*, a newspaper published in Oklahoma City that covered topics of interest to Oklahoma's black citizens, touted development in East Park in 1921. A notice in the newspaper urged black visitors to come to Enid's East Park Addition to "see what our people are doing" in the new addition to the city. East Park boasted a 14-room boarding house, a modern grocery store and an ice cream parlor, "In fact, we have most anything you will be looking for in Enid, OK" (*Black Dispatch*, May 13, 1921: 6). A few months later the newspaper announced the opening of the new high school, one of the stand-out achievements of the city's black community.

The citizens of Enid are very proud to know they are to have a new ten-room school house. The school will be modern throughout and when finished will be the best in the state. Several new departments will be added including all High School work (*Black Dispatch*, July 15, 1921).

Throughout the 1920s, the lots of East Park filled in with single-family dwellings, stores and rooming houses. Jack Poe built one of the addition's oldest extant grocery stores at the corner of Fifth and York in 1921 and he planned a 20-room boarding house at 610 E. York. William Ferguson operated a 14-room boarding house on East Wabash Street that same year but he planned to move it to Market Avenue (Owen Garriott), possibly because the street had more traffic (*Black Dispatch*, August 12, 1921: 3). From these accounts, Enid's East Park Addition appears to have been a bustling development in the 1920s (Figure 23).

Job opportunities for blacks in Enid may have been more plentiful in the 1920s, but were narrow in scope. Hallie Nash recalled that the only jobs available for black men were as porters and washing cars. In most hotels and restaurants, blacks could only aspire to be bus boys or cooks but not waiters (Nash interview, 1995). Estell Laster agreed that washing cars was one of the main occupations available to blacks in the 1920s and 1930s—that, and chopping cotton (Laster interview, 1997).

The city did have at least one black police officer during the 1920s, but his authority was extremely limited. In fact, black policemen were not allowed to arrest white miscreants and could not



Figure 23. Washington School playground, East Park in background, ca.1925 (Mary Umstead Collection)

use weapons in the discharge of their duties. In the climate that followed the Tulsa riots, a situation occurred in Enid's notorious Two Street that ended in the arrest of a black peace officer. An intoxicated man named Fred Williams had "run amuck on South Second Street" according to the *Black Dispatch*. When black policeman and school principal Henry Backstrom tried to arrest the man, he ran off to find a hatchet, presumably to attack Backstrom. A "melee" followed in which Backstrom shot and seriously wounded Williams. Backstrom was subsequently arrested in the incident because black officers were not allowed to use weapons. It remains unknown whether Williams was white or black. Although a jury acquitted the officer, the incident highlighted the extent to which Jim Crow laws restricted the ability of black citizens to function in society. Tom Duncan and Louis Umstead are also remembered as some of Enid's early police officers (Allen et al., Interview, 1997; *Black Dispatch*, October 1, 1921: 1).

By the end of the 1920s, Enid's black residential neighborhoods were solidly concentrated in the southeast quadrant of the city, particularly in the East Park Addition. The 1925 city directory, shows that few black residents lived north of East Park Avenue or west of Enid Boulevard (now Leona Mitchell Boulevard). Enid's black community was almost exclusively concentrated there from the early 1920s until after World War II when it expanded into the adjacent Southern Heights additions. Virtually

all of the city's black institutions, commercial enterprises, new housing starts and recreational venues lay in the southeast quadrant of the city. And, while many individuals from the community worked outside the boundaries, very little interaction took place between Enid's white and black communities during those years. As a result, the East Park community became an almost autonomous entity apart from the city of Enid until after World War II. This area defined the primary black residential and commercial districts for the next three decades.

THE GREAT DEPRESSION

In his book, *The Blacks in Oklahoma*, Jimmy Lewis Franklin asserts that blacks fled Oklahoma in larger numbers than whites during the Great Depression. However, census figures for Garfield County show a slight increase in the percentage of black residents in Enid from 1930 to 1940. Enid's population at the beginning of the Great Depression was 26,399, with its 793 black residents comprising only 3.0 percent of the city's total numbers. By the end of the decade, Enid's black population increased to 1,050, or 3.7 percent of the total population of 28,081 (U.S. Census, 1930, 1940). It was a small increase but a significant change from earlier decades in which both the number and percentage of black residents declined from previous years.

During the 1930s, a few black families moved into the Southern Heights Addition which had previously been predominantly white. In 1936, Jackson School, a Mission/Spanish Colonial Revival style elementary school at 411 E. Illinois, was completed for the white children of Southern Heights. In later years, the school would be called "the last bastion of overt segregation in the Enid school system" because black children living in the area could not attend the all white school (Edson, 1989: A-1). Instead, black children living in Southern Heights attended the city's only designated school for blacks at that time, Booker T. Washington School.

Many of Enid's current black citizens can trace their family's history in the city to the 1920s and 1930s. Beatrice Toliver Hazley in her book *Simply Me* (1996), described her family life in Enid's East

Park Addition [she recalled it as Southern Heights, as that name became more consistently identified with Enid's black community]. Her parents, Jackson Toliver Sr. and Laura Ella Isabella Top Belcher, were native Oklahomans; her father born in Luther in 1907 and mother born in Hennessey in 1912. By 1937 the family purchased a house at 468 E. York Avenue where Beatrice was born in 1939. Mr. Toliver was a janitorial contractor who worked for a variety of Enid businesses included jewelry stores and banks. His job appears to be typical steady non-professional black employment in the 1930s and 1940s (City directories, various).

Ms. Hazley's description of her house and "Southern Heights" neighborhood is probably typical of the area at that time, as well. The house contained three bedrooms, a bath, kitchen, dining and living rooms and a "dirt cellar" where the family stored canned goods raised in their garden. Chickens ranged in the yard. Cold running water was available, but the family apparently did not have a hot water heater because they heated water on the stove for baths in a tin tub. By 1939, this was an established neighborhood still occupied by some of the earliest residents. Among them were Anthony Dunn, who owned and operated a neighborhood grocery store on York, and the Rhollie Johnson family. Children in the neighborhood listened to the radio, played games, went fishing and attended church. Families frequently remained part of the same congregation for several generations. The Tolivers were members of the church where their daughter, Bea, was ultimately married. As part of her church education, Bea was forbidden to attend dances, go to the movies, or play cards.

WORLD WAR II AND THE POST WAR ERA

Enid's black community contributed time, money and men to the country's defense effort during World War II. Many black servicemen from throughout the country were stationed at Vance Air Force Base outside of Enid during the war. Subject to segregation during that time, they had separate facilities including barracks and mess halls. Because the base did not have recreational and religious facilities for blacks, they were bused to Enid's Southern Heights/East Park area to attend church and baseball games

in the black community. Patriotic black citizens invited some of the servicemen who were far from their own homes to picnics and other family activities to make them feel more at home. One of the servicemen who stayed in Enid was Willie F. Allen who met his future wife, Dorice, in the neighborhood. They later married and made their home in Enid (Allen interview, Sept. 12, 1997).

In 1941, the white Seventh Day Adventist congregation outgrew their church at the corner of Randolph and Quincy streets in Enid's Kenwood Addition. They built a new church on the same location and moved the old one to serve the black Seventh Day Adventist congregation at Wabash and Leona Mitchell streets in the East Park Addition. Originally built as an Episcopal Church in 1902, the black Seventh Day Adventist congregation used the facility until 1993 when it was moved yet again to the Cherokee Strip Museum's Heritage Village. It is thought to be the oldest extant church in Enid.

Like the rest of the country, Enid experienced a post-war resurgence in construction and in population with returning GI's forming new families and increasing the school age population in what has come to be termed the "baby boom". The black neighborhoods of Southern Heights/East Park increased, as well, and within a few years it was necessary to build a new elementary school to reduce enrollment pressures at Booker T. Washington, which was slated to become a High School. The new George Washington Carver School was designed by R.W. Shaw and built by the Hughes Construction Company of Edmond, Oklahoma. Located in the same block as Washington School, Carver School opened for students in 1949 and in 1951 an addition drawn by M.N. Wheeler and constructed by D.C. Bass and Sons was completed. A second addition was built in 1956 by Ogden Construction Company following plans of architect D.A. Smith (Vertical files, Enid Public Library). The new, yellow-brick school is a good example of a modern low-slung, one-story brick buildings typical of the post-war era.

Another important building constructed in the black community following the war was the Youth Recreation Center and Negro Chamber of Commerce at 451 E. State. Also known as the Negro Teen Town, the brick building was built in 1946 at a cost of about \$10,000 (Umstead scrapbook, ca. 1950). Traditionally associated with black service organizations, the site had previously contained the

Knights of Pythias Hall built in 1925. It replaced the 1938 Washington Recreation Center, which also housed the Works Progress Administration (WPA), according to the 1940 city directory. The new center hosted community activities for black residents including the Y-Teens organization of the YWCA, after-school sports activities, and summer arts and crafts programs for children. Also, black airmen stationed at Vance Air Force Base attended social functions at the center sponsored by young women who were members of the black YWCA organization for working girls. Some school-related activities took place at the center as well. Washington School held its annual football banquet at the hall, and the Altrusa Club sponsored an annual graduation party for seniors there, as well (Umstead scrapbook, ca. 1950).

The immediate post-war era was a mobile one. Thousands of families, black and white, pulled up stakes and headed to new homes. Some looked for better opportunities, while others simply moved for a change. By 1950, L. R. Robinson, president of the Negro Chamber of Commerce estimated Enid's black population at about 1,700 (Umstead scrapbook, ca. 1951). A number of Enid's long time black residents, including Henry Newton, Carrie Foreman and Willie F. Allen, date their arrival in the city to the late 1940s and early 1950s. Henry Newton Sr. found a job at Sears and later at Champlin Refinery (Newton, Foreman et. al. Interview, 1997).

In the decade following the end of World War II, many early twentieth century houses were moved from older Enid neighborhoods into the Southern Heights/East Park area. Some replaced smaller or sub-standard housing in the area while others were infill properties. Some houses were moved from the white neighborhoods to East Park because the white owners moved to new post-war subdivisions. The introduction of better housing to the Southern Heights/East Park area indicates that blacks, who still had little upward mobility in the post-war era, experienced at least some degree of prosperity along with the rest of Enid's population. Many of the houses moved from others parts of Enid now have historic associations with Southern Heights/East Park. In addition to single family houses, three one-story barracks buildings were moved from Vance Air Force Base to the 300 block of East State Avenue in the post-war era. The frame semi-permanent buildings were converted to apartments about 1950.

Enid's economic well-being and subsequent new development slowly began to break up the historic fabric of its black neighborhoods in the early 1950s. In February 1951, St. Mary's Hospital began building a new facility to accommodate Enid's rapidly expanding post-war population. The \$1.6 million, 309-room hospital built by the Bass Construction Co. of Enid eventually expanded into the surrounding neighborhood with offices and parking lots replacing some of the historic black residential section in the adjacent blocks of East Park and East Market avenues (*Enid News-Eagle*, April 1, 1954).

RACIAL INTEGRATION AND THE DISSOLUTION OF THE SOUTHERN HEIGHTS AND EAST PARK NEIGHBORHOODS

Until the 1949-1950 school year, all of Enid's black children attended Booker T. Washington School. It was the city's only black school, serving grades 1-12. Like Enid's white schools, Washington School offered sports activities such as basketball and football and other extra-curricular subjects such

as band. The Booker

T. Washington

Marching Lions par-

ticipated in a city-

wide parade for the

first time in 1947

(Figure 24). Some of

the memorable teach-

ers during the 1940s

and 1950s were

Clemmy Owens,

Leona B. Jones and

Myrtle McSwain

(Allen, et.al., 1997).

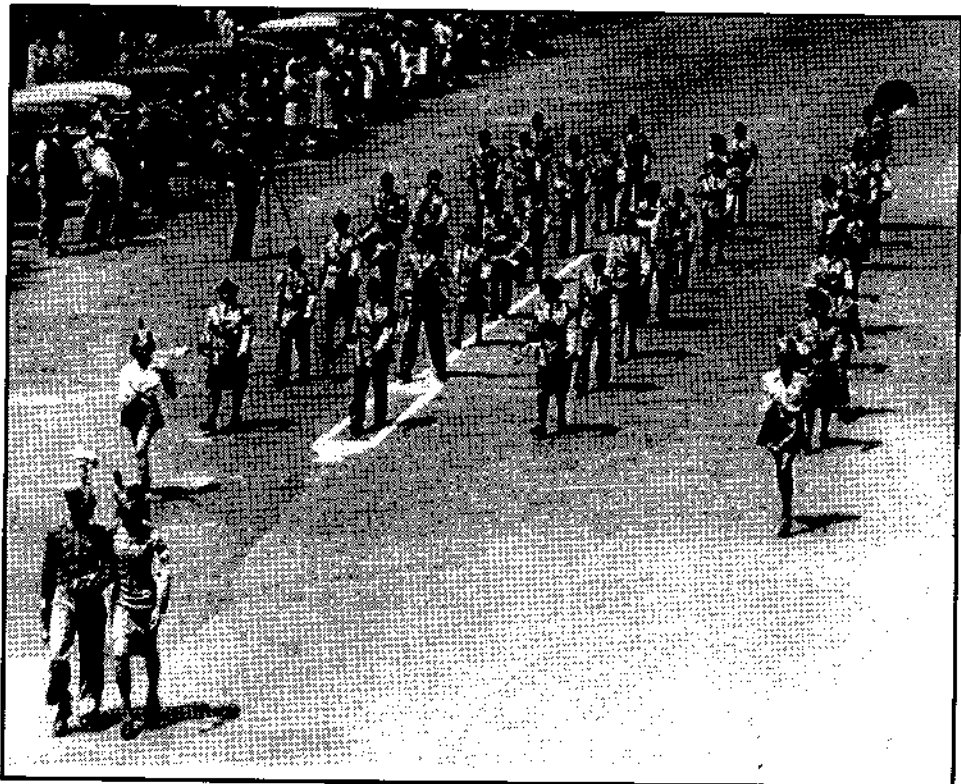


Figure 24. Booker T. Washington Marching Lions, ca.1947 (Courtesy of Dorice Allen)

Since it was established as a manual training school in 1921, Booker T. Washington maintained an emphasis on school-to-work programs for its students through the 1950s. Girls in upper grades trained for post-graduate jobs in nursing and domestic arts. Most of the girls took home economics classes and worked part-time as a requirement of the “manual training” curriculum. Local families typically contacted the

school to hire girls for housekeeping and other domestic service jobs (Figure 25). High school girls also trained as nurses’ aides at nearby St. Mary’s Hospital. Until the mid-1950s, the hospital offered a nurse’s training program for



Figure 25. Domestic Science Class, ca. 1948 (Mary Umstead Collection)

Washington School graduates. Courses in auto mechanics were among the most popular manual training classes for boys at Washington School (Hazley, 1996: n.p.).

Church activities continued to be the mainstay of Enid’s black communities. The New Light Missionary Baptist Church (the current church at 452 E. Indiana) was founded in 1951 under the leadership of Reverend B.J. Johnson. The first organizational meeting was held at 508 E. Ohio. In 1952 the congregation moved into the old Holiness Church then located at 500 E. Iowa (in 1954 city directory, 514 E. Iowa). About 1955, through the donation of funds by Mrs. Johnson’s employer, Mrs. Jane Champlin, the congregation purchased the present church lot at 452 E. Indiana. Reverend Johnson and

his wife Mabel lived at 306 E. Park and also owned Johnson's Dry Cleaners, which operated out of their home.

Enid's small black community did its best to provide recreational opportunities, including sports venues, for its citizens. In the early 1950s, black families persuaded city officials to build a swimming pool for their children since they were prohibited from using the municipal pool designated for whites only. Several newspaper articles at the time highlighted the need for such a pool. One carried a photo showing two black children soaking in a metal tub under the caption, "It may be cool but it's not swimming" (Umstead scrapbook, n.d.). Finally, the city built Owens Pool, in the black section of Government Springs Park "at the end of Fifth Street". The pool was named for Robert Lee Owens, a courageous ten-year-old who died trying to save his friend from drowning after he had fallen through the ice covering Government Springs Lake, in 1963 (Allen Interview, 1997). In another effort, black citizens led by Estell Laster literally created their own baseball park on Cleveland Avenue with little more than the donation of convict labor provided by the city. Kellet Park, as it is known, remains in use. Enid also had a Negro League baseball team known as the Black Bears. Laster, who once played against Jackie Robinson in the Negro Leagues, was coach and manager of Enid's semi-professional baseball club. After integration, Henry Newton Jr., coached Enid's first bi-racial Little League baseball team, sponsored by the Gasoline Retailers (Laster Interview, 1997).

In the mid-1950s, rumblings of school integration began to be heard throughout Oklahoma. The 1954 Supreme Court Decision in *Brown vs. the Board of Education of Topeka* declared the "separate but equal" policy of school segregation to be unconstitutional. School integration was not immediately achieved, however. It took nearly a decade and the reorganization of the school district before Enid's schools were fully desegregated (Weibel, 1988: A-6). According to Oklahoma superintendent of public instruction Dr. Oliver Hodge, the state's integration plan was to gradually close selected black schools throughout the state, transporting black students to white schools in the area. In a single year, for instance, sixteen schools including seven elementary, seven junior high and two high schools were slated for closure increasing the number of black students in white schools by nearly 2,000 to a total of 10,246.

Within five years, 101 elementary schools, 15 junior high schools, and 63 high schools closed throughout Oklahoma. As a result, 360 black teachers lost their jobs (Umstead scrapbook, ca. 1957).

Booker T. Washington School continued as a segregated high school until the 1959-1960 school year when Enid schools were integrated. Prior to full integration, black students could apply to the white high school to take special courses like foreign languages and typing that were not offered at Washington (Allen, interview, 1997). In accordance with the state office of public instruction, Washington School was closed and black high school students were distributed among other schools throughout Enid. In an attempt to retain neighborhood schools in the Southern Heights/East Park area, the Board of Education paired the all-white Jackson School with the all-black Carver School, sending both black and white children to Jackson for grades 1-3 and to Carver for the upper grades, 4-6. The experiment lasted only a few years, from 1967 until 1969. Many white families moved from the area during that period and within a few years both Jackson and Carver schools served predominately black students, thereby nullifying the goal of integration (Weibel, in *Enid Daily Eagle*, April 13, 1988: A-6). Both Jackson and Carver were closed in 1969 and children from Southern Heights/East Park were bused to other schools in the district (Edson, 1989). In a neighborhood where there were once three schools, by 1970 there were none.

Even as integration prompted changes throughout the black community, local students who had graduated from the segregated school system were doing well in other places. Notable among them was Maurice King, son of Mr. and Mrs. Willie M. King of 329 E. Park, who received a PhD degree in biochemistry from the Illinois Institute of Technology in 1961. King was a 1943 graduate of Washington High School and a 1947 graduate of Lincoln University in Jefferson City, Missouri. He went on to all-black Howard University in Washington D. C. for his Masters degree and taught chemistry at Morehouse College and at Texas Southern University (*Enid Daily Eagle* June 27, 1961 in Umstead scrapbook).

Students from Enid's black communities continued to strive for excellence after integration moved them to schools in other parts of town. International opera star, Leona Mitchell, is one of Enid's most famous daughters. A 1966 graduate of Enid High School and winner of the National Achievement Scholarship Program for Outstanding Negro Students, Leona Mitchell went on to sing with New York City's Metropolitan Opera. Mitchell, daughter of Reverend and Mrs. Hulon Mitchell of 1821 Denim Street, was raised in a musical family. "The Musical Mitchells" entertained their friends and neighbors at numerous church functions during the post-war era. Leona Mitchell was inducted into the Oklahoma Women's Hall of Fame for her achievements (Umstead scrapbook, n.d.).

Church activities continued to foster community pride even after some families began to loosen their ties to the old neighborhoods. In October 1960, the First Baptist Church on East State Avenue was torn down and replaced with a new building. The congregation, which was first organized in 1893, met to worship on Oklahoma Avenue until the new church was completed. On April 21, 1961, the new church was opened for services and numerous area churches, including the Seventh Day Adventist Church, Church of God in Christ, Grayson Baptist Church, and the white Christian Church, helped to celebrate the momentous event. The corner stone of the church described the solidarity which remained in the neighborhood church congregations - "It is part of the community and cannot be destroyed so long as the community shall live."

While the integration of Enid's public schools was a long-awaited and welcome achievement in most regards, it had several unintended - and ultimately deleterious - effects on the black community. One casualty of integration was the loss of experienced black teachers. Although black students were incorporated into previously all-white classes in Enid's schools, there was little accommodation for their former teachers. Black teachers who had been determined qualified to teach at the all-black schools were suddenly found to be deficient to teach at white schools. Some school boards simply cited a lack of job openings. Education was traditionally one of the few professional avenues available to blacks.

Teachers comprised the largest professional career within black society. It is ironic that in the era of integration, this door was suddenly blocked. Through a series of lawsuits and perseverance, black teachers finally made inroads in the previously white schools. Dorice Allen was one of the first black teachers in Enid's newly integrated school system. She became the assistant librarian at Enid High School and then head librarian at Emerson Junior High for the 1966-1967 school year. Mrs. Allen was inducted in the Oklahoma Educators Hall of Fame in 1985 (Umstead scrapbook, ca. 1957).

Enid's small black community had identified strongly with its schools. They provided the focus and shared experience of community life. Although loyalties were divided among four or five area churches, virtually everyone in the black community claimed an association with the school regardless of whether their children or grandchildren were enrolled. Many community social and civic activities occurred at the schools and their athletic teams and scholastic achievements were a source of pride for the entire community. When the schools were closed, the Southern Heights/East Park neighborhood lost its focus. Associated with school integration was the gradual dispersal of black families throughout the Enid area. Young families with children tended to leave the historic black community to be closer to schools, for newer or more modern subdivisions, and, simply, because they could. School integration helped reduce racial barriers to housing opportunities in traditionally white residential areas and many young families moved from the Southern Heights/East Park area. As a result, the neighborhood lost much of its vitality and many of the area's houses fell into disrepair or ruin.

CONCLUSION

In recent years, the Southern Heights and East Park neighborhoods received few new residents and many black families have moved out of the historic communities. In 1980, the black population of Enid reached 2,084, constituted 3.3 percent of the city's total of 62,820 (U.S. Census Bureau, 1980). Since 1985, when aerial photography documented the community's then-existing building stock, approximately 50 single-family houses have been removed. Only a handful of new or moved houses have replaced them. Today, many historic dwellings throughout the neighborhood lay abandoned, their windows boarded and doors padlocked against intruders. None of the neighborhood groceries or candy stores that dotted the residential streets in the neighborhood's heyday are open and only a handful of businesses, primarily industrial activities along the railroad tracks and modern convenience stores and gas stations along Owen Garriott Road, remain in operation. Closed, too, is the former Gehay Grocery, more recently remembered as the Cobra, a somewhat notorious nightclub on South Second Street. Likewise, Washington Recreation Center, Owens Pool and other vestiges of "separate but equal" policies of the past have been closed or obliterated. Owens Pool was closed and filled in about 1994 (Allen interview, September 12, 1997). Nearly every block in the neighborhood, particularly in the traditionally black section east of Leona Mitchell Boulevard, contains vacant lots and abandoned houses. Entire block faces have been cleared in some cases. In others, only one or two houses survive where six or more frame houses once formed a streetscape.

Bright spots remain, however. Area churches, among them St. Stephens AME, Grayson Missionary Baptist, Tabernacle Baptist, Indian Baptist and the Seventh Day Adventist churches, bring congregants back to the neighborhood on a weekly basis. Ironically, one of the most appalling race-related events of Enid's recent history - the June 1996 burning of the First Missionary Baptist Church at 473 E. State Avenue, within the East Park Addition - has served to bring blacks and whites, both in Enid and throughout the country, together to rebuild the church near its original site. The nearly completed church near South Fifth Street and Owen K. Garriott Road is scheduled for completion in October, 1997 (Allen Interview, September 12, 1997).

Although no longer serving as public schools, Carver and Washington schools have been reopened through the efforts of community activists and city funding. Washington School now operates as the Booker T. Washington Community Center. In conjunction with the United Way and using Community Development Block Grant funds, local citizen Byron Mitchell spearheaded an effort to rehabilitate and reopen the school as a community center in the early 1970s (Allen Interview, September 12, 1997). It houses a variety of city-wide enhancement programs including athletic teams for children and hot meals for elders. Next door at 815 S. Fifth Street, Carver School provides adult education courses and other educational programs, also available to residents of the entire city. Built in 1949 as a black elementary school, Carver School may be eligible for National Register listing in two years when it meets the age criteria of 50 years. Another school in the neighborhood is Jackson Elementary, listed in the National Register of Historic Places (1989) for its distinctive Mission/Spanish Colonial Revival architecture. Used to store school district supplies for a few years, the building was sold to a local real estate consultant and has served various non-profit organizations in more recent years including Operation Uplift, the Seventh Day Adventist clothing distribution center, and the Enid Community Child Care Center (Edson, January 20, 1989).

Abandonment of these three neighborhood schools, while in the furtherance of a just cause, ultimately had a deleterious effect on the character of the surrounding community. Younger families in particular moved away from the old neighborhood, associated with segregation and lost opportunities. Many older buildings deteriorated, were abandoned and finally demolished either by the owners or by the city. Whole block faces throughout the neighborhood have been cleared of all but one or two buildings in some cases, leaving the area looking more like a rural hamlet than an urban neighborhood. Still, several churches traditionally identified with the black community and a remembered sense of black identification with area schools, particularly Booker T. Washington, recall the time when Southern Heights/East Park was a cohesive and thriving black enclave.

Today, the Southern Heights/East Park neighborhoods contain one school that is already listed in the National Register of Historic Places, a second school that is eligible for listing, and a third that may be eligible within a few years. Booker T. Washington School, for decades the city's only black school, was listed in the Oklahoma State Register of Historic Places in 1984. Jackson School, one of only three examples of Mission/Spanish Colonial Revival architecture in Enid, was listed in the National Register in 1990. George Washington Carver Elementary School built in 1949 on grounds adjacent to Booker T. Washington, is an excellent, relatively unaltered example of the modern, post- World War II school architecture typical of the baby boom era. Aside from these schools, only one other building within the project area was identified as potentially eligible for listing in the National Register. It is the Williams-Criddle-Smith House at 451 E. Owen K. Garriott Road. The project area itself is not eligible for listing as a historic district due to the number of its properties that have been demolished and the type and extent of alterations to extant buildings. Nevertheless, the area retains important associations with Enid's historic black community from the earliest years of the city's settlement until school desegregation helped break down racial barriers to open housing opportunities. For more than half a century, Southern Heights and East Park represented the primary contributions of Enid's black citizenry to the city's development.

ANNOTATED BIBLIOGRAPHY

Burton, Al. *Black, Red, and Deadly: Black and Indian Gunfighters of the Indian Territories, 1870-1907*. Austin, Tx.: Eakin Press, 1991.

Author Art Burton recounts the exploits and adventures of black and Indian outlaws, soldiers, and lawmen during the late nineteenth century.

Caton, R.J. *A Social and Cultural History of Enid, Oklahoma*. Masters thesis. Norman: University of Oklahoma Press, 1954.

Caton discusses Enid's development primarily in terms of its population and institutional growth, rather than through its residential and commercial construction and expansion.

Debo, Angie. *Prairie City: The Story of an American Community*. Tulsa: Council Oak Books, Ltd., 1944, reprint 1985.

In prose style, Debo tells of the development of Oklahoma and its small communities. She describes the land rush of 1889, struggles of early pioneers, effects of two World Wars on a local population, racial tension and Ku Klux Klan activity, oil boom, bank failures, and economic recovery.

Edson, Bill. "Blacks Made Race For Land in The Cherokee Strip" in *The Enid Morning News*, Enid, Oklahoma, April 15, 1988: A-1.

In April, 1988, staff writer Bill Edson wrote a series of articles on issues relating to the city's black populace for the local newspaper, *The Enid Morning News*. This article was particularly useful for this project because it cited early census figures and other statistical information about early black settlers in Enid.

Ellsworth, Scott. *Death in a Promised Land: The Tulsa Race Riot of 1921*. Baton Rouge: Louisiana State University Press, 1982.

A detailed account of events leading up to and surrounding the infamous Tulsa race riots of 1921. In his work, Ellsworth describes the changing racial climate of the new state of Oklahoma in the early twentieth century and the social and economic pressures following World War I which culminated in one of the most terrible racial incidents in the nation's history. The book helped to illuminate the effects of the riots and race relations throughout the state on the African American citizens of Enid, particularly in black communities like Southern Heights and East Park.

***Enid Eagle*, Vol. IX, No. 31. April 10, 1902. Supplemental Edition of the *Enid Eagle*, reprinted 1967. Enid, Oklahoma.**

This souvenir edition of a 1902 supplement to the *Enid Eagle*, a daily newspaper, was reprinted in 1967 by J. Lee Cromwell and Merle D. Allen of Enid, Oklahoma. This souvenir edition offered a retrospective of Enid's development, only eight years after the City's establishment during the Cherokee Strip land rush. A copy of the souvenir edition is on file in the Marquis James Room of the Enid Public Library.

Eskridge, Sister M. and Sister H. Laster. *History of First Baptist Church: 1893-1990*. Unpublished history of the present First Missionary Baptist Church, Enid, Oklahoma: 1990.

This unpublished church history includes a section by Sister M. Eskridge, one of the founding members of Enid's first black Baptist Church, established in 1893 shortly after the Cherokee Strip Land Run. According to Eskridge, she and the other church founders participated in the great land run. Although secondary sources indicated that some of Enid's early black citizens may have made the run, Eskridge's is the only known first-hand account of the event and it is the only one that identifies individual black participants by name.

Faulk, Odie B., and Kenny A. Franks, series editor. *Dear Everybody: The Life of Henry B. "Heinie" Bass, Sincerely HBB.* Oklahoma City, Oklahoma Heritage Association: 1982.

Henry B. Bass, better known as "Heinie" Bass, was Enid's most prominent builder. He went to work for his father's construction company during the construction boom of the 1910s and 1920s, eventually gaining a reputation of his own. H.B. Bass and Bass Construction Company were inducted into the Hall of American Builders in 1960. This compilation of his popular newspaper column "Dear Everybody" mentions architects such as Roy Shaw, and many of the projects he worked on, including the H.H. Champlin House in Enid. The Bass Construction Company completed over 1,500 residential buildings.

Franklin, Jimmie Lewis. *The Blacks in Oklahoma.* Norman: University of Oklahoma Press, 1980.

In this book, Franklin analyzes the role of African Americans in Oklahoma, from the early days of settlement in the 1830s to recent times. This is a good, concise history of black challenges in Oklahoma highlighting struggles for Civil Rights. The book discusses relatively good relations among Indian tribes and after the Civil War, deals with increasing Jim Crow legislation accompanying statehood.

Garfield County Clerk's Office. *Additions Plat Maps.* Garfield County Courthouse, Enid: various dates.

The Garfield County Clerk's office houses plat maps and deed records for the City of Enid dating from its inception with the Cherokee Strip land rush. Plat maps for the Marshall-Gannon First, Second and Third additions, as well as plat maps for the Hays and McQuilkin additions, and townsites for Enid and Jonesville, copied for this survey report, were obtained from originals on file with the County Clerk. Deed records showing the transfer of homesteads from the original owners to land

investment companies and finally to individuals for building lots, are also on file and proved valuable to researchers attempting to understand the pattern of construction within the districts.

Gleason, J. Paul. *Enid's Spot in Oklahoma*. Enid: Enid Chamber of Commerce, September 15, 1939.

This promotional booklet produced at the end of the 1930s was designed to attract investment and commercial business to Enid. Although the city is shown at its very best, the facts, figures, and photographs of buildings offer a glimpse of Enid's status at the close of the Great Depression and toward the end of the historic period.

Grayson Baptist Church. *75th Anniversary and Home Coming Loyalty Day*. Enid, Oklahoma: August 18, 1968.

Unpublished church history that includes names of early black residents in Enid, some of whom may have made the Cherokee Strip Land Run.

McAlester, Virginia and Lee McAlester. *A Field Guide to American Houses*. New York: Alfred A. Knopf, 1991.

McAlester and McAlester, as this handbook is known, is one of the premiere guides to domestic architectural style and plan-types in America.

Morgan, H. Wayne and Morgan, Annie Hodges. *Oklahoma: A History*. New York: W.W. Norton & Company, Inc., 1977.

This book focuses on Oklahoma as one of America's last frontiers. Through its discussion of settlement, pioneer struggles, racial discrimination and violence, and volatile economic ventures, Oklahoma stands out as a relatively new state where national issues and trends, like racism and the economic boom spawned by the oil industry, have matured quickly with extreme results.

Morris, John W. ed. *Cities of Oklahoma*. Oklahoma City: Oklahoma Historical Society, 1979.

Edited by John Morris, this book traces Oklahoma's urban history and identifies Enid's place within that context. The essay by Morris entitled "Regional Centers" was particularly helpful in identifying Enid as the regional agricultural and commercial hub of the Cherokee Outlet.

Polk, R.L. and Company. *Enid City Directories*. Sioux City, Iowa: R.L. Polk & Co., 1906-1954.

City directories are most useful when organized by address. Enid city directories began listing individuals by street address in 1923, so buildings can be fairly accurately dated to that year. Once a name could be associated with an address, certain names could be traced to the same address in earlier directories, indicating that the building existed at the earlier date. City directories offer much useful statistical information about the status of a city for a given year, such as the town's population, amenities, railroad and streetcar access, products, and prospects for future growth.

Rockwell, Stella Campbell ed. *Garfield County, Oklahoma 1893-1982*. Two Volumes. Topeka, Kansas: Josten's Publications, 1982.

The two volume Garfield County history, sponsored by the Garfield County Historical Society, is comprised of a historical overview of the county's growth, first-hand accounts of selected events and people, and family histories and photographs. The history contains a biographical index used to identify some of the early trends and personalities surrounding the development of the Southern Heights and East Park additions.

Randolph, Debbie. *The City of Enid, Oklahoma: Historic Architecture Survey*. Enid: The Dougherty Press, Inc., September, 1985.

This report features a concise, yet insightful, historic context that is especially useful as a backdrop for understanding the development of Enid's residential additions.

Sanborn Fire Insurance Company. *Maps of Enid, Oklahoma for the years 1894, 1895, 1896, 1998, 1901, 1904, 1908, 1911, 1917, 1925, 1930, and 1947.*

Sanborn maps, drawn to scale, depict the outline or footprint of each building within the built sections of a town. Updated maps were completed for each town every few years. By comparing the building outlines from one year to the next, changes in individual properties, as well as the overall growth of a community, can be tracked. Also, buildings can be dated to within a few years by comparing the maps.

Smith, Michael M. *Resource Protection Planning Project: Patterns of White Settlement in Oklahoma, 1889-1907, Regions Two.* Oklahoma Historic Preservation Survey, Department of History, Oklahoma State University, Stillwater: 1986.

This planning document deals with patterns of white settlement in Region Two, which includes Garfield County, from the first land runs in 1889 to statehood in 1907. Although the document contains no specific references to black or other ethnic groups, it lists total population figures for Enid and Garfield County. These figures were used to determine racial percentages when figures for black citizens were known through other sources.

Tolson, Arthur L. *The Black Oklahomans, A History: 1541-1972.* New Orleans: Edwards Printing Company, 1966.

Tolson, Arthur L. "*The Negro in Oklahoma Territory, 1889-1907: A Study*". PhD dissertation, University of Oklahoma, 1966.

Tolson's work, *The Black Oklahomans*, provides an in depth account of African American occupation of Oklahoma from their early arrival in the area with the Spanish in 1541, through racial discrimination during the early period of statehood and controversy over Jim Crow laws, to socio-economic

advancements of blacks in the 1970s. Both this book and his dissertation are excellent sources on Oklahoma's black history.

United States Bureau of the Census. *Population Census for the State of Oklahoma for the years 1930, 1940, 1950, and 1980* (provided by the reference desk of the City of Enid Library).

Umstead, Mary. *Scrapbook*, n.d. in possession of Dorice Allen, director of the Booker T. Washington Community Center, Enid, Oklahoma.

Mary Harris Umstead came to Enid about 1919 to teach at Booker T. Washington School which was then located on the grounds of Spring Park. She later married Louis Umstead, who came to Enid as superintendent for the new school which was being built in the East Park Addition. Mrs. Umstead collected hundreds of newspaper clippings about the achievements and vital issues of black citizens on local, state and national levels. Unfortunately, few are identified by source or date. Among her clippings was a hand-written speech that Mrs. Umstead gave at a commencement address. It described Enid's early black neighborhoods and the struggles that took place to secure a satisfactory education for black children. The speech, along with the interviews of community residents, was among the most valuable sources of information for this report.

Weibel, Michael R. "Black High School Closed In '59 In Enid" in *Enid Daily Eagle*, Enid, Oklahoma, April, 13, 1988, A-6.

This is an article in a local newspaper about the closure of Booker T. Washington High School and the decade-long efforts to integrate Enid's public schools.

Interviews

Allen, Dorice. Taped interviews with Terri Myers, Booker T. Washington Community Center, Enid, Oklahoma: January 27 and 30, 1997.

Allen, Dorice. Telephone interview with Terri Myers, Enid, Oklahoma: September 12, 1997.

Foreman, Carrie. Taped interview with Terri Myers, Booker T. Washington Community Center, Enid, Oklahoma: January 27, 1997.

Laster, Estell. Taped interview with Terri Myers, Booker T. Washington Community Center, Enid, Oklahoma: January 27, 1997.

Mitchell, Rev. Hulon. Taped interview with Terri Myers, Booker T. Washington Community Center, Enid, Oklahoma: January 30, 1997.

Nash, Hallie. Videotaped interview with Clayton Nolan for Pegasys Public Access Television, Enid, Oklahoma, 1995.

Newton, Henry. Taped interviews with Terri Myers, Booker T. Washington Community Center, Enid, Oklahoma: January 27, 1997.

Nolan, Clayton. Interview with Terri Myers, George Washington Carver School and Southern Heights/East Hill neighborhoods, Enid, Oklahoma: January 30, 1997.

Ware, Jesse. Taped interview with Terri Myers, 466 E. Ohio, Enid, Oklahoma: January 30, 1997.

SUMMARY

Marked by industrial development along the railroad tracks that define its western boundary and numerous vacant lots where historic dwellings have been removed, Southern Heights/East Park lacks the sustained domestic architectural fabric that defines most of Enid's other historic residential neighborhoods. Southern Heights/East Park has probably experienced greater loss of building stock in the past decade than other, previously documented historic neighborhoods in Enid. Although some new and rehabilitated historic houses have reappeared on a few sites within the neighborhood in the past decade, the neighborhood is pock-marked with vacant lots and abandoned dwellings.

Despite the deterioration of its building stock, the neighborhood retains strong historic associations with Enid's black community. The East Park section of the project area may be the only addition that was developed by the city's black citizens from the outset. Although white and Hispanic families comprised the early population of Southern Heights, it was increasingly associated with the black community after World War II and throughout the 1950s. The neighborhood contains several important churches, three historic schools and many early 20th century dwellings associated with Enid's black community such as the Williams-Criddle-Smith House at 451 E. Owen K. Garriott Road, teacher Myrtle B. McSwain's house at 419 E. State Avenue, and the Albert Veal House at 452 E. York Avenue.

Among the properties surveyed by HHM, only Booker T. Washington School and the Williams-Criddle-Smith House warrant consideration for listing in the National Register of Historic Places. Washington School was listed in the Oklahoma State Register of Historic Places in 1984 and is an excellent candidate for national recognition for its historic associations with Enid's black community and for its architectural integrity. In interviews with prominent members of Enid's black community, the Williams-Criddle-Smith House has been consistently identified as a local historic landmark and home of prominent black families since its construction about 1925. It is the only surviving dwelling on E. Owen K. Garriott Road, once a major thoroughfare through the black community and a link between the Southern Heights/East Park additions and the historic core of that community. Jackson School is already

listed in the National Register of Historic Places (1990). However, when George Washington Carver School attains 50 years of age, it should be considered eligible, as well.

APPENDIX A

HISTORIC RESOURCES SURVEY OF THE SOUTHERN HEIGHTS NEIGHBORHOOD ENID, OKLAHOMA - 1997

HARDY-HECK-MOORE & ASSOCIATES, INC.

ADDRESS	RESOURCE TYPE	ARCHITECTURAL STYLE	DATE	COMMENTS
202 E ILLINOIS AVENUE	B BUILDING	01 NO DISTINCTIVE STYLE	CA. 1930	DOES NOT CONTRIBUTE DUE TO ALTERATION
206 E ILLINOIS AVENUE	B BUILDING	01 NO DISTINCTIVE STYLE	CA. 1928	DOES NOT CONTRIBUTE DUE TO ALTERATION
209 E ILLINOIS AVENUE	U STRUCTURE	01 NO DISTINCTIVE STYLE	CA. 1970	DOES NOT CONTRIBUTE DUE TO AGE
219 E ILLINOIS AVENUE	B BUILDING	01 NO DISTINCTIVE STYLE	CA. 1930	DOES NOT CONTRIBUTE DUE TO ALTERATION
222 E ILLINOIS AVENUE	B BUILDING	01 NO DISTINCTIVE STYLE	CA. 1910	DOES NOT CONTRIBUTE DUE TO ALTERATION
229 E ILLINOIS AVENUE	B BUILDING	82 SHOTGUN	CA. 1928	CONTRIBUTES
230 E ILLINOIS AVENUE	B BUILDING	65 BUNGALOW/CRAFTSMAN	CA. 1920	CONTRIBUTES
302 E ILLINOIS AVENUE	B BUILDING	80 OTHER	CA. 1975	DOES NOT CONTRIBUTE DUE TO AGE
306 E ILLINOIS AVENUE	B BUILDING	65 BUNGALOW/CRAFTSMAN	CA. 1930	CONTRIBUTES
307 E ILLINOIS AVENUE	B BUILDING	65 BUNGALOW/CRAFTSMAN	CA. 1930	CONTRIBUTES
310 E ILLINOIS AVENUE	B BUILDING	65 BUNGALOW/CRAFTSMAN	CA. 1930	CONTRIBUTES
322 E ILLINOIS AVENUE	B BUILDING	01 NO DISTINCTIVE STYLE	CA. 1955	DOES NOT CONTRIBUTE DUE TO AGE
402 E ILLINOIS AVENUE	B BUILDING	01 NO DISTINCTIVE STYLE	CA. 1935	DOES NOT CONTRIBUTE DUE TO ALTERATION
410 E ILLINOIS AVENUE	B BUILDING	53 TUDOR REVIVAL	CA. 1940	CONTRIBUTES
411 E ILLINOIS AVENUE	B BUILDING	55 MISSION/SPANISH COLONIAL REVIVAL	CA. 1936	INDIVIDUALLY ELIGIBLE FOR LISTING IN THE NATIONAL REGISTER OF HISTORIC PLACES
454 E ILLINOIS AVENUE	B BUILDING	65 BUNGALOW/CRAFTSMAN	CA. 1925	CONTRIBUTES
463 E ILLINOIS AVENUE	B BUILDING	01 NO DISTINCTIVE STYLE	CA. 1930	DOES NOT CONTRIBUTE DUE TO ALTERATION
467 E ILLINOIS AVENUE	B BUILDING	01 NO DISTINCTIVE STYLE	CA. 1955	DOES NOT CONTRIBUTE DUE TO AGE
476 E ILLINOIS AVENUE	B BUILDING	01 NO DISTINCTIVE STYLE	CA. 1935	DOES NOT CONTRIBUTE DUE TO ALTERATION
501 E ILLINOIS AVENUE	B BUILDING	01 NO DISTINCTIVE STYLE	CA. 1960	DOES NOT CONTRIBUTE DUE TO AGE & ALTERATION
509 E ILLINOIS AVENUE	B BUILDING	65 BUNGALOW/CRAFTSMAN	CA. 1925	CONTRIBUTES
522 E ILLINOIS AVENUE	B BUILDING	83 FOLK VICTORIAN	CA. 1895	DOES NOT CONTRIBUTE DUE TO ALTERATION
523 E ILLINOIS AVENUE	B BUILDING	65 BUNGALOW/CRAFTSMAN	CA. 1920	DOES NOT CONTRIBUTE DUE TO AGE
526 E ILLINOIS AVENUE	B BUILDING	01 NO DISTINCTIVE STYLE	CA. 1955	DOES NOT CONTRIBUTE DUE TO AGE
605 E ILLINOIS AVENUE	B BUILDING	01 NO DISTINCTIVE STYLE	CA. 1965	DOES NOT CONTRIBUTE DUE TO AGE
610 E ILLINOIS AVENUE	B BUILDING	01 NO DISTINCTIVE STYLE	CA. 1940	DOES NOT CONTRIBUTE DUE TO ALTERATION
625 E ILLINOIS AVENUE	B BUILDING	01 NO DISTINCTIVE STYLE	CA. 1965	DOES NOT CONTRIBUTE DUE TO AGE
204 E INDIANA AVENUE	B BUILDING	65 BUNGALOW/CRAFTSMAN	CA. 1930	CONTRIBUTES
205 E INDIANA AVENUE	B BUILDING	01 NO DISTINCTIVE STYLE	CA. 1930	DOES NOT CONTRIBUTE DUE TO ALTERATION
210 E INDIANA AVENUE	B BUILDING	01 NO DISTINCTIVE STYLE	CA. 1945	CONTRIBUTES
214 E INDIANA AVENUE	B BUILDING	01 NO DISTINCTIVE STYLE	CA. 1950	CONTRIBUTES

HISTORIC RESOURCES SURVEY OF THE SOUTHERN HEIGHTS NEIGHBORHOOD EMID, OKLAHOMA - 1997

HARDY-HECK-MOORE & ASSOCIATES, INC.

ADDRESS	RESOURCE TYPE	ARCHITECTURAL STYLE	DATE	COMMENTS
215 E INDIANA AVENUE	B BUILDING	01 NO DISTINCTIVE STYLE	CA. 1930	DOES NOT CONTRIBUTE DUE TO ALTERATION
221 E INDIANA AVENUE	B BUILDING	01 NO DISTINCTIVE STYLE	CA. 1935	CONTRIBUTES
222 E INDIANA AVENUE	B BUILDING	01 NO DISTINCTIVE STYLE	CA. 1935	DOES NOT CONTRIBUTE DUE TO ALTERATION
225 E INDIANA AVENUE	B BUILDING	65 BUNGALOW/CRAFTSMAN	CA. 1930	CONTRIBUTES
305 E INDIANA AVENUE	B BUILDING	65 BUNGALOW/CRAFTSMAN	CA. 1930	CONTRIBUTES
306 E INDIANA AVENUE	B BUILDING	01 NO DISTINCTIVE STYLE	CA. 1940	DOES NOT CONTRIBUTE DUE TO ALTERATION
309 E INDIANA AVENUE	B BUILDING	65 BUNGALOW/CRAFTSMAN	CA. 1930	DOES NOT CONTRIBUTE DUE TO ALTERATION
311 E INDIANA AVENUE	B BUILDING	65 BUNGALOW/CRAFTSMAN	CA. 1930	DOES NOT CONTRIBUTE DUE TO ALTERATION
312 E INDIANA AVENUE	B BUILDING	01 NO DISTINCTIVE STYLE	CA. 1930	CONTRIBUTES
401 E INDIANA AVENUE	B BUILDING	01 NO DISTINCTIVE STYLE	CA. 1930	CONTRIBUTES
402 E INDIANA AVENUE	B BUILDING	01 NO DISTINCTIVE STYLE	CA. 1940	CONTRIBUTES
408 E INDIANA AVENUE	B BUILDING	65 BUNGALOW/CRAFTSMAN	CA. 1925	CONTRIBUTES
413 E INDIANA AVENUE	B BUILDING	01 NO DISTINCTIVE STYLE	CA. 1950	DOES NOT CONTRIBUTE DUE TO AGE
421 E INDIANA AVENUE	B BUILDING	01 NO DISTINCTIVE STYLE	CA. 1935	DOES NOT CONTRIBUTE DUE TO ALTERATION
424 E INDIANA AVENUE	B BUILDING	65 BUNGALOW/CRAFTSMAN	CA. 1920	DOES NOT CONTRIBUTE DUE TO ALTERATION
451 E INDIANA AVENUE	B BUILDING	01 NO DISTINCTIVE STYLE	CA. 1945	DOES NOT CONTRIBUTE DUE TO ALTERATION
452 E INDIANA AVENUE	B BUILDING	01 NO DISTINCTIVE STYLE	CA. 1954	DOES NOT CONTRIBUTE DUE TO AGE & ALTERATION
459 E INDIANA AVENUE	B BUILDING	65 BUNGALOW/CRAFTSMAN	CA. 1930	CONTRIBUTES
460 E INDIANA AVENUE	B BUILDING	01 NO DISTINCTIVE STYLE	CA. 1940	DOES NOT CONTRIBUTE DUE TO ALTERATION
463 E INDIANA AVENUE	B BUILDING	65 BUNGALOW/CRAFTSMAN	CA. 1935	DOES NOT CONTRIBUTE DUE TO ALTERATION
465 E INDIANA AVENUE	B BUILDING	80 OTHER	CA. 1960	DOES NOT CONTRIBUTE DUE TO AGE
201 E IOWA AVENUE	B BUILDING	80 OTHER	CA. 1910	CONTRIBUTES
202 E IOWA AVENUE	B BUILDING	83 FOLK VICTORIAN	CA. 1900	CONTRIBUTES
205 E IOWA AVENUE	B BUILDING	01 NO DISTINCTIVE STYLE	CA. 1940	CONTRIBUTES
208 E IOWA AVENUE	B BUILDING	01 NO DISTINCTIVE STYLE	CA. 1950	DOES NOT CONTRIBUTE DUE TO AGE
214 E IOWA AVENUE	B BUILDING	01 NO DISTINCTIVE STYLE	CA. 1970	DOES NOT CONTRIBUTE DUE TO AGE
217 E IOWA AVENUE	B BUILDING	01 NO DISTINCTIVE STYLE	CA. 1985	DOES NOT CONTRIBUTE DUE TO AGE
227 E IOWA AVENUE	B BUILDING	82 SHOTGUN	CA. 1925	DOES NOT CONTRIBUTE DUE TO ALTERATION
230 E IOWA AVENUE	B BUILDING	80 OTHER	CA. 1925	DOES NOT CONTRIBUTE DUE TO ALTERATION
306 E IOWA AVENUE	B BUILDING	65 BUNGALOW/CRAFTSMAN	CA. 1930	CONTRIBUTES
314 E IOWA AVENUE	B BUILDING	01 NO DISTINCTIVE STYLE	CA. 1935	CONTRIBUTES
317 E IOWA AVENUE	B BUILDING	01 NO DISTINCTIVE STYLE	CA. 1925	CONTRIBUTES

HISTORIC RESOURCES SURVEY OF THE SOUTHERN HEIGHTS NEIGHBORHOOD ENID, OKLAHOMA - 1997

HARDY-HECK-HOORE & ASSOCIATES, INC.

ADDRESS	RESOURCE TYPE	ARCHITECTURAL STYLE	DATE	COMMENTS
320 E IOWA AVENUE	B BUILDING	01 NO DISTINCTIVE STYLE	CA. 1930	DOES NOT CONTRIBUTE DUE TO ALTERATION
325 E IOWA AVENUE	B BUILDING	02 SHOTGUN	CA. 1930	CONTRIBUTES
401 E IOWA AVENUE	B BUILDING	01 NO DISTINCTIVE STYLE	CA. 1910	CONTRIBUTES
456 E IOWA AVENUE	B BUILDING	80 OTHER	CA. 1930	DOES NOT CONTRIBUTE DUE TO ALTERATION
458 E IOWA AVENUE	B BUILDING	01 NO DISTINCTIVE STYLE	CA. 1960	DOES NOT CONTRIBUTE DUE TO AGE
467 E IOWA AVENUE	B BUILDING	82 SHOTGUN	CA. 1910	CONTRIBUTES
470 E IOWA AVENUE	B BUILDING	01 NO DISTINCTIVE STYLE	CA. 1965	DOES NOT CONTRIBUTE DUE TO AGE
473 E IOWA AVENUE	B BUILDING	01 NO DISTINCTIVE STYLE	CA. 1950	DOES NOT CONTRIBUTE DUE TO AGE
501 E IOWA AVENUE	B BUILDING	01 NO DISTINCTIVE STYLE	CA. 1975	DOES NOT CONTRIBUTE DUE TO AGE
509 E IOWA AVENUE	B BUILDING	01 NO DISTINCTIVE STYLE	CA. 1950	DOES NOT CONTRIBUTE DUE TO AGE
519 E IOWA AVENUE	B BUILDING	01 NO DISTINCTIVE STYLE	CA. 1955	DOES NOT CONTRIBUTE DUE TO AGE
523 E IOWA AVENUE	B BUILDING	65 BUNGALOW/CRAFTSMAN	CA. 1920	CONTRIBUTES
603 E IOWA AVENUE	B BUILDING	83 FOLK VICTORIAN	CA. 1910	DOES NOT CONTRIBUTE DUE TO ALTERATION
101-103 E OHIO AVENUE	B BUILDING	01 NO DISTINCTIVE STYLE	CA. 1940	CONTRIBUTES
114 E OHIO AVENUE	B BUILDING	01 NO DISTINCTIVE STYLE	CA. 1945	DOES NOT CONTRIBUTE DUE TO ALTERATION
132 E OHIO AVENUE	B BUILDING	01 NO DISTINCTIVE STYLE	CA. 1950	DOES NOT CONTRIBUTE DUE TO AGE
138 E OHIO AVENUE	B BUILDING	01 NO DISTINCTIVE STYLE	CA. 1945	DOES NOT CONTRIBUTE DUE TO ALTERATION
139 E OHIO AVENUE	B BUILDING	98 INAPPLICABLE	CA. 1950	DOES NOT CONTRIBUTE DUE TO AGE
142 E OHIO AVENUE	B BUILDING	01 NO DISTINCTIVE STYLE	CA. 1940	CONTRIBUTES
206 E OHIO AVENUE	B BUILDING	01 NO DISTINCTIVE STYLE	CA. 1930	CONTRIBUTES
213 E OHIO AVENUE	B BUILDING	01 NO DISTINCTIVE STYLE	CA. 1925	DOES NOT CONTRIBUTE DUE TO ALTERATION
217 E OHIO AVENUE	B BUILDING	01 NO DISTINCTIVE STYLE	CA. 1980	DOES NOT CONTRIBUTE DUE TO AGE
218 E OHIO AVENUE	B BUILDING	80 OTHER	CA. 1980	DOES NOT CONTRIBUTE DUE TO AGE
226 E OHIO AVENUE	B BUILDING	01 NO DISTINCTIVE STYLE	CA. 1925	CONTRIBUTES
302 E OHIO AVENUE	B BUILDING	01 NO DISTINCTIVE STYLE	CA. 1925	DOES NOT CONTRIBUTE DUE TO ALTERATION
306 E OHIO AVENUE	B BUILDING	82 SHOTGUN	CA. 1930	DOES NOT CONTRIBUTE DUE TO ALTERATION
325 E OHIO AVENUE	B BUILDING	01 NO DISTINCTIVE STYLE	CA. 1925	DOES NOT CONTRIBUTE DUE TO ALTERATION
409 E OHIO AVENUE	B BUILDING	65 BUNGALOW/CRAFTSMAN	CA. 1935	CONTRIBUTES
418 E OHIO AVENUE	B BUILDING	01 NO DISTINCTIVE STYLE	CA. 1950	DOES NOT CONTRIBUTE DUE TO AGE
420 E OHIO AVENUE	B BUILDING	01 NO DISTINCTIVE STYLE	CA. 1950	DOES NOT CONTRIBUTE DUE TO AGE
422 E OHIO AVENUE	B BUILDING	01 NO DISTINCTIVE STYLE	CA. 1925	DOES NOT CONTRIBUTE DUE TO ALTERATION
464 E OHIO AVENUE	B BUILDING	01 NO DISTINCTIVE STYLE	CA. 1945	CONTRIBUTES

HISTORIC RESOURCES SURVEY OF THE SOUTHERN HEIGHTS NEIGHBORHOOD ENID, OKLAHOMA - 1997

HARDY-HECK-MOORE & ASSOCIATES, INC.

ADDRESS	RESOURCE TYPE	ARCHITECTURAL STYLE	DATE	COMMENTS
466 E OHIO AVENUE	B BUILDING	80 OTHER	CA. 1950	DOES NOT CONTRIBUTE DUE TO AGE
468 E OHIO AVENUE	B BUILDING	80 OTHER	CA. 1970	DOES NOT CONTRIBUTE DUE TO AGE
506 E OHIO AVENUE	B BUILDING	65 BUNGALOW/CRAFTSMAN	CA. 1925	CONTRIBUTES
518 E OHIO AVENUE	B BUILDING	82 SHOTGUN	CA. 1935	DOES NOT CONTRIBUTE DUE TO ALTERATION
602 E OHIO AVENUE	B BUILDING	01 NO DISTINCTIVE STYLE	CA. 1975	DOES NOT CONTRIBUTE DUE TO AGE
609 E OHIO AVENUE	B BUILDING	01 NO DISTINCTIVE STYLE	CA. 1925	DOES NOT CONTRIBUTE DUE TO ALTERATION
305 E PARK AVENUE	B BUILDING	53 TUDOR REVIVAL	CA. 1925	CONTRIBUTES
315 E PARK AVENUE	B BUILDING	83 FOLK VICTORIAN	CA. 1905	CONTRIBUTES
317 E PARK AVENUE	B BUILDING	65 BUNGALOW/CRAFTSMAN	CA. 1925	DOES NOT CONTRIBUTE DUE TO ALTERATION
701 E PARK AVENUE	B BUILDING	01 NO DISTINCTIVE STYLE	CA. 1909	DOES NOT CONTRIBUTE DUE TO ALTERATION
201 E STATE AVENUE	B BUILDING	65 BUNGALOW/CRAFTSMAN	CA. 1925	DOES NOT CONTRIBUTE DUE TO ALTERATION
203 E STATE AVENUE	B BUILDING	01 NO DISTINCTIVE STYLE	CA. 1925	DOES NOT CONTRIBUTE DUE TO ALTERATION
211 E STATE AVENUE	B BUILDING	65 BUNGALOW/CRAFTSMAN	CA. 1925	CONTRIBUTES
225 E STATE AVENUE	B BUILDING	65 BUNGALOW/CRAFTSMAN	CA. 1925	DOES NOT CONTRIBUTE DUE TO ALTERATION
226 E STATE AVENUE	B BUILDING	65 BUNGALOW/CRAFTSMAN	CA. 1925	CONTRIBUTES
301 E STATE AVENUE	B BUILDING	01 NO DISTINCTIVE STYLE	CA. 1955	DOES NOT CONTRIBUTE DUE TO AGE
309 E STATE AVENUE	B BUILDING	01 NO DISTINCTIVE STYLE	CA. 1965	DOES NOT CONTRIBUTE DUE TO AGE
313 E STATE AVENUE	B BUILDING	01 NO DISTINCTIVE STYLE	CA. 1900	DOES NOT CONTRIBUTE DUE TO ALTERATION
403 E STATE AVENUE	B BUILDING	65 BUNGALOW/CRAFTSMAN	CA. 1925	CONTRIBUTES
405 E STATE AVENUE	B BUILDING	52 CLASSICAL REVIVAL	CA. 1915	CONTRIBUTES
411 E STATE AVENUE	B BUILDING	65 BUNGALOW/CRAFTSMAN	CA. 1923	DOES NOT CONTRIBUTE DUE TO ALTERATION
415 E STATE AVENUE	B BUILDING	52 CLASSICAL REVIVAL	CA. 1915	DOES NOT CONTRIBUTE DUE TO ALTERATION
419 E STATE AVENUE	B BUILDING	65 BUNGALOW/CRAFTSMAN	CA. 1928	CONTRIBUTES
451 E STATE AVENUE	B BUILDING	01 NO DISTINCTIVE STYLE	CA. 1945	CONTRIBUTES
452 E STATE AVENUE	B BUILDING	65 BUNGALOW/CRAFTSMAN	CA. 1920	CONTRIBUTES
464 E STATE AVENUE	B BUILDING	65 BUNGALOW/CRAFTSMAN	CA. 1930	CONTRIBUTES
475 E STATE AVENUE	B BUILDING	83 FOLK VICTORIAN	CA. 1910	CONTRIBUTES
476 E STATE AVENUE	B BUILDING	01 NO DISTINCTIVE STYLE	CA. 1970	DOES NOT CONTRIBUTE DUE TO AGE
501 E STATE AVENUE	B BUILDING	01 NO DISTINCTIVE STYLE	CA. 1955	DOES NOT CONTRIBUTE DUE TO AGE
502 E STATE AVENUE	B BUILDING	80 OTHER	CA. 1970	DOES NOT CONTRIBUTE DUE TO AGE
505 E STATE AVENUE	B BUILDING	83 FOLK VICTORIAN	CA. 1905	CONTRIBUTES
506 E STATE AVENUE	B BUILDING	80 OTHER	CA. 1970	DOES NOT CONTRIBUTE DUE TO AGE

HISTORIC RESOURCES SURVEY OF THE SOUTHERN HEIGHTS NEIGHBORHOOD ENID, OKLAHOMA - 1997

HARDY-HECK-MOORE & ASSOCIATES, INC.

ADDRESS	RESOURCE TYPE	ARCHITECTURAL STYLE	DATE	COMMENTS
513 E STATE AVENUE	B BUILDING	65 BUNGALOW/CRAFTSMAN	CA. 1940	CONTRIBUTES
516 E STATE AVENUE	B BUILDING	65 BUNGALOW/CRAFTSMAN	CA. 1925	CONTRIBUTES
519 E STATE AVENUE	B BUILDING	65 BUNGALOW/CRAFTSMAN	CA. 1925	CONTRIBUTES
520 E STATE AVENUE	B BUILDING	01 NO DISTINCTIVE STYLE	CA. 1955	DOES NOT CONTRIBUTE DUE TO AGE
521 E STATE AVENUE	B BUILDING	65 BUNGALOW/CRAFTSMAN	CA. 1928	DOES NOT CONTRIBUTE DUE TO ALTERATION
525 E STATE AVENUE	B BUILDING	83 FOLK VICTORIAN	CA. 1905	CONTRIBUTES
526 E STATE AVENUE	B BUILDING	65 BUNGALOW/CRAFTSMAN	CA. 1945	DOES NOT CONTRIBUTE DUE TO ALTERATION
602 E STATE AVENUE	B BUILDING	81 NATIONAL FOLK	CA. 1905	DOES NOT CONTRIBUTE DUE TO ALTERATION
605 E STATE AVENUE	B BUILDING	65 BUNGALOW/CRAFTSMAN	CA. 1925	DOES NOT CONTRIBUTE DUE TO ALTERATION
625 E STATE AVENUE	B BUILDING	83 FOLK VICTORIAN	CA. 1905	DOES NOT CONTRIBUTE DUE TO ALTERATION
627 E STATE AVENUE	B BUILDING	01 NO DISTINCTIVE STYLE	CA. 1985	DOES NOT CONTRIBUTE DUE TO AGE
201 E WABASH AVENUE	B BUILDING	65 BUNGALOW/CRAFTSMAN	CA. 1923	CONTRIBUTES
207 E WABASH AVENUE	B BUILDING	82 SHOTGUN	CA. 1935	DOES NOT CONTRIBUTE DUE TO ALTERATION
208 E WABASH AVENUE	B BUILDING	65 BUNGALOW/CRAFTSMAN	CA. 1925	CONTRIBUTES
212 E WABASH AVENUE	B BUILDING	65 BUNGALOW/CRAFTSMAN	CA. 1925	CONTRIBUTES
215 E WABASH AVENUE	B BUILDING	65 BUNGALOW/CRAFTSMAN	CA. 1925	DOES NOT CONTRIBUTE DUE TO ALTERATION
218 E WABASH AVENUE	B BUILDING	80 OTHER	CA. 1945	DOES NOT CONTRIBUTE DUE TO ALTERATION
219 E WABASH AVENUE	B BUILDING	65 BUNGALOW/CRAFTSMAN	CA. 1925	CONTRIBUTES
222 E WABASH AVENUE	B BUILDING	65 BUNGALOW/CRAFTSMAN	CA. 1925	CONTRIBUTES
223 E WABASH AVENUE	B BUILDING	80 OTHER	CA. 1925	DOES NOT CONTRIBUTE DUE TO ALTERATION
302 E WABASH AVENUE	B BUILDING	01 NO DISTINCTIVE STYLE	CA. 1940	CONTRIBUTES
321 E WABASH AVENUE	B BUILDING	01 NO DISTINCTIVE STYLE	CA. 1955	DOES NOT CONTRIBUTE DUE TO AGE
402 E WABASH AVENUE	B BUILDING	83 FOLK VICTORIAN	CA. 1900	CONTRIBUTES
406 E WABASH AVENUE	B BUILDING	81 NATIONAL FOLK	CA. 1900	DOES NOT CONTRIBUTE DUE TO ALTERATION
409 E WABASH AVENUE	B BUILDING	01 NO DISTINCTIVE STYLE	CA. 1962	DOES NOT CONTRIBUTE DUE TO AGE
410 E WABASH AVENUE	B BUILDING	01 NO DISTINCTIVE STYLE	CA. 1950	DOES NOT CONTRIBUTE DUE TO AGE
412 E WABASH AVENUE	B BUILDING	82 SHOTGUN	CA. 1935	CONTRIBUTES
413 E WABASH AVENUE	B BUILDING	81 NATIONAL FOLK	CA. 1905	DOES NOT CONTRIBUTE DUE TO ALTERATION
450 E WABASH AVENUE	B BUILDING	83 FOLK VICTORIAN	CA. 1905	DOES NOT CONTRIBUTE DUE TO ALTERATION
454 E WABASH AVENUE	B BUILDING	01 NO DISTINCTIVE STYLE	CA. 1930	DOES NOT CONTRIBUTE DUE TO ALTERATION
457 E WABASH AVENUE	B BUILDING	80 OTHER	CA. 1910	DOES NOT CONTRIBUTE DUE TO ALTERATION
459 E WABASH AVENUE	B BUILDING	80 OTHER	CA. 1975	DOES NOT CONTRIBUTE DUE TO AGE

HISTORIC RESOURCES SURVEY OF THE SOUTHERN BRIGHS NEIGHBORHOOD ENID, OKLAHOMA - 1997

HARDY-HECK-MOORE & ASSOCIATES, INC.

ADDRESS	RESOURCE TYPE	ARCHITECTURAL STYLE	DATE	COMMENTS
463 E WABASH AVENUE	B BUILDING	80 OTHER	CA. 1970	DOES NOT CONTRIBUTE DUE TO AGE
472 E WABASH AVENUE	B BUILDING	01 NO DISTINCTIVE STYLE	CA. 1940	DOES NOT CONTRIBUTE DUE TO ALTERATION
475 E WABASH AVENUE	B BUILDING	80 OTHER	CA. 1970	DOES NOT CONTRIBUTE DUE TO AGE
502 E WABASH AVENUE	B BUILDING	80 OTHER	CA. 1975	DOES NOT CONTRIBUTE DUE TO AGE
516 E WABASH AVENUE	B BUILDING	65 BUNGALOW/CRAFTSMAN	CA. 1920	CONTRIBUTES
520 E WABASH AVENUE	B BUILDING	01 NO DISTINCTIVE STYLE	CA. 1920	DOES NOT CONTRIBUTE DUE TO ALTERATION
602 E WABASH AVENUE	B BUILDING	82 SHOTGUN	CA. 1925	CONTRIBUTES
101 E YORK AVENUE	B BUILDING	01 NO DISTINCTIVE STYLE	CA. 1930	CONTRIBUTES
118 E YORK AVENUE	B BUILDING	01 NO DISTINCTIVE STYLE	CA. 1955	DOES NOT CONTRIBUTE DUE TO ALTERATION
122 E YORK AVENUE	B BUILDING	65 BUNGALOW/CRAFTSMAN	CA. 1930	CONTRIBUTES
205 E YORK AVENUE	B BUILDING	65 BUNGALOW/CRAFTSMAN	CA. 1925	CONTRIBUTES
206 E YORK AVENUE	B BUILDING	65 BUNGALOW/CRAFTSMAN	CA. 1925	CONTRIBUTES
209 E YORK AVENUE	B BUILDING	65 BUNGALOW/CRAFTSMAN	CA. 1920	CONTRIBUTES
212 E YORK AVENUE	B BUILDING	65 BUNGALOW/CRAFTSMAN	CA. 1930	CONTRIBUTES
213 E YORK AVENUE	B BUILDING	65 BUNGALOW/CRAFTSMAN	CA. 1930	CONTRIBUTES
217 E YORK AVENUE	B BUILDING	65 BUNGALOW/CRAFTSMAN	CA. 1923	CONTRIBUTES
218 E YORK AVENUE	B BUILDING	65 BUNGALOW/CRAFTSMAN	CA. 1920	CONTRIBUTES
220 E YORK AVENUE	B BUILDING	82 SHOTGUN	CA. 1930	CONTRIBUTES
226 E YORK AVENUE	B BUILDING	65 BUNGALOW/CRAFTSMAN	CA. 1925	CONTRIBUTES
227 E YORK AVENUE	B BUILDING	65 BUNGALOW/CRAFTSMAN	CA. 1925	CONTRIBUTES
302 A E YORK AVENUE	B BUILDING	01 NO DISTINCTIVE STYLE	CA. 1981	DOES NOT CONTRIBUTE DUE TO AGE
302 B E YORK AVENUE	B BUILDING	01 NO DISTINCTIVE STYLE	CA. 1990	DOES NOT CONTRIBUTE DUE TO AGE
305 E YORK AVENUE	B BUILDING	65 BUNGALOW/CRAFTSMAN	CA. 1930	CONTRIBUTES
309 E YORK AVENUE	B BUILDING	01 NO DISTINCTIVE STYLE	CA. 1930	CONTRIBUTES
310 E YORK AVENUE	B BUILDING	01 NO DISTINCTIVE STYLE	CA. 1930	DOES NOT CONTRIBUTE DUE TO ALTERATION
313 E YORK AVENUE	B BUILDING	65 BUNGALOW/CRAFTSMAN	CA. 1930	CONTRIBUTES
314 E YORK AVENUE	B BUILDING	65 BUNGALOW/CRAFTSMAN	CA. 1930	CONTRIBUTES
316 E YORK AVENUE	B BUILDING	65 BUNGALOW/CRAFTSMAN	CA. 1930	CONTRIBUTES
320 E YORK AVENUE	B BUILDING	65 BUNGALOW/CRAFTSMAN	CA. 1930	CONTRIBUTES
401 E YORK AVENUE	B BUILDING	01 NO DISTINCTIVE STYLE	CA. 1925	DOES NOT CONTRIBUTE DUE TO ALTERATION
402 E YORK AVENUE	B BUILDING	65 BUNGALOW/CRAFTSMAN	CA. 1925	CONTRIBUTES
406 E YORK AVENUE	B BUILDING	01 NO DISTINCTIVE STYLE	CA. 1940	CONTRIBUTES

HISTORIC RESOURCES SURVEY OF THE SOUTHERN HEIGHTS NEIGHBORHOOD EMID, OKLAHOMA - 1997

HARDY-HECK-MOORE & ASSOCIATES, INC.

ADDRESS	RESOURCE TYPE	ARCHITECTURAL STYLE	DATE	COMMENTS
410 E YORK AVENUE	B BUILDING	65 BUNGALOW/CRAFTSMAN	CA. 1920	CONTRIBUTES
418 E YORK AVENUE	B BUILDING	65 BUNGALOW/CRAFTSMAN	CA. 1930	DOES NOT CONTRIBUTE DUE TO ALTERATION
419 E YORK AVENUE	B BUILDING	01 NO DISTINCTIVE STYLE	CA. 1920	CONTRIBUTES
421 E YORK AVENUE	B BUILDING	01 NO DISTINCTIVE STYLE	CA. 1940	CONTRIBUTES
452 E YORK AVENUE	B BUILDING	81 NATIONAL FOLK	CA. 1915	CONTRIBUTES
456 E YORK AVENUE	B BUILDING	65 BUNGALOW/CRAFTSMAN	CA. 1920	CONTRIBUTES
460 E YORK AVENUE	B BUILDING	80 OTHER	CA. 1970	DOES NOT CONTRIBUTE DUE TO AGE
466 E YORK AVENUE	B BUILDING	83 FOLK VICTORIAN	CA. 1900	CONTRIBUTES
476 E YORK AVENUE	B BUILDING	80 OTHER	CA. 1965	DOES NOT CONTRIBUTE DUE TO AGE
477 E YORK AVENUE	B BUILDING	01 NO DISTINCTIVE STYLE	CA. 1930	CONTRIBUTES
501 E YORK AVENUE	B BUILDING	53 TUDOR REVIVAL	CA. 1950	DOES NOT CONTRIBUTE DUE TO AGE
521 E YORK AVENUE	B BUILDING	65 BUNGALOW/CRAFTSMAN	CA. 1930	DOES NOT CONTRIBUTE DUE TO ALTERATION
602 E YORK AVENUE	B BUILDING	01 NO DISTINCTIVE STYLE	CA. 1950	DOES NOT CONTRIBUTE DUE TO AGE & ALTERATION
611 E YORK AVENUE	B BUILDING	65 BUNGALOW/CRAFTSMAN	CA. 1950	DOES NOT CONTRIBUTE DUE TO AGE
616 E YORK AVENUE	B BUILDING	81 NATIONAL FOLK	CA. 1920	CONTRIBUTES
618 E YORK AVENUE	B BUILDING	01 NO DISTINCTIVE STYLE	CA. 1930	CONTRIBUTES
700 BLOCK (BRIDGE) E YORK AVENUE	U STRUCTURE	01 NO DISTINCTIVE STYLE	CA. 1981	DOES NOT CONTRIBUTE DUE TO AGE
1006 S TEXAS STREET	B BUILDING	65 BUNGALOW/CRAFTSMAN	CA. 1950	DOES NOT CONTRIBUTE DUE TO AGE
1808 S TEXAS STREET	B BUILDING	01 NO DISTINCTIVE STYLE	CA. 1955	DOES NOT CONTRIBUTE DUE TO AGE
1223 LEONA MITCHELL BOULEVARD	B BUILDING	01 NO DISTINCTIVE STYLE	CA. 1930	CONTRIBUTES
630 LEONA MITCHELL PLACE	B BUILDING	01 NO DISTINCTIVE STYLE	CA. 1975	DOES NOT CONTRIBUTE DUE TO AGE
170 E OWEN K. GARRIOTT ROAD	B BUILDING	01 NO DISTINCTIVE STYLE	CA. 1980	DOES NOT CONTRIBUTE DUE TO AGE
202 E OWEN K. GARRIOTT ROAD	B BUILDING	01 NO DISTINCTIVE STYLE	CA. 1970	DOES NOT CONTRIBUTE DUE TO AGE
207 E OWEN K. GARRIOTT ROAD	B BUILDING	01 NO DISTINCTIVE STYLE	CA. 1920	DOES NOT CONTRIBUTE DUE TO ALTERATION
208 E OWEN K. GARRIOTT ROAD	B BUILDING	01 NO DISTINCTIVE STYLE	CA. 1975	DOES NOT CONTRIBUTE DUE TO AGE
211 E OWEN K. GARRIOTT ROAD	B BUILDING	65 BUNGALOW/CRAFTSMAN	CA. 1935	DOES NOT CONTRIBUTE DUE TO ALTERATION
215 E OWEN K. GARRIOTT ROAD	B BUILDING	01 NO DISTINCTIVE STYLE	CA. 1925	DOES NOT CONTRIBUTE DUE TO ALTERATION
217-221 E OWEN K. GARRIOTT ROAD	B BUILDING	01 NO DISTINCTIVE STYLE	CA. 1975	DOES NOT CONTRIBUTE DUE TO AGE
228 E OWEN K. GARRIOTT ROAD	B BUILDING	98 INAPPLICABLE	CA. 1975	DOES NOT CONTRIBUTE DUE TO AGE
310-312-314 E OWEN K. GARRIOTT ROAD	B BUILDING	01 NO DISTINCTIVE STYLE	CA. 1985	DOES NOT CONTRIBUTE DUE TO AGE
334 E OWEN K. GARRIOTT ROAD	B BUILDING	01 NO DISTINCTIVE STYLE	CA. 1981	DOES NOT CONTRIBUTE DUE TO AGE
451 E OWEN K. GARRIOTT ROAD	B BUILDING	51 COLONIAL REVIVAL	CA. 1925	INDIVIDUALLY ELIGIBLE FOR LISTING IN THE NATIONAL REGISTER OF HISTORIC PLACES

HISTORIC RESOURCES SURVEY OF THE SOUTHERN HEIGHTS NEIGHBORHOOD ENID, OKLAHOMA - 1997

HARDY-HECK-MOORE & ASSOCIATES, INC.

ADDRESS	RESOURCE TYPE	ARCHITECTURAL STYLE	DATE	COMMENTS
710 S 2ND STREET	U STRUCTURE	01 NO DISTINCTIVE STYLE	CA. 1980	DOES NOT CONTRIBUTE DUE TO AGE
724 S 2ND STREET	B BUILDING	01 NO DISTINCTIVE STYLE	CA. 1985	DOES NOT CONTRIBUTE DUE TO AGE
802 S 2ND STREET	B BUILDING	01 NO DISTINCTIVE STYLE	CA. 1975	DOES NOT CONTRIBUTE DUE TO AGE
900 S 2ND STREET	B BUILDING	01 NO DISTINCTIVE STYLE	CA. 1975	DOES NOT CONTRIBUTE DUE TO AGE
901 S 2ND STREET	B BUILDING	01 NO DISTINCTIVE STYLE	CA. 1949	DOES NOT CONTRIBUTE DUE TO AGE & ALTERATION
917 S 2ND STREET	B BUILDING	01 NO DISTINCTIVE STYLE	CA. 1940	DOES NOT CONTRIBUTE DUE TO ALTERATION
1002 S 2ND STREET	B BUILDING	01 NO DISTINCTIVE STYLE	CA. 1930	DOES NOT CONTRIBUTE DUE TO ALTERATION
1024 S 2ND STREET	B BUILDING	65 BUNGALOW/CRAFTSMAN	CA. 1925	CONTRIBUTES
1114 S 2ND STREET	B BUILDING	65 BUNGALOW/CRAFTSMAN	CA. 1925	DOES NOT CONTRIBUTE DUE TO ALTERATION
1202 S 2ND STREET	B BUILDING	01 NO DISTINCTIVE STYLE	CA. 1925	DOES NOT CONTRIBUTE DUE TO ALTERATION
1214 S 2ND STREET	B BUILDING	81 NATIONAL FOLK	CA. 1910	CONTRIBUTES
613 S 3RD STREET	B BUILDING	01 NO DISTINCTIVE STYLE	CA. 1950	DOES NOT CONTRIBUTE DUE TO AGE
810 S 3RD STREET	B BUILDING	65 BUNGALOW/CRAFTSMAN	CA. 1925	CONTRIBUTES
1201 S 3RD STREET	B BUILDING	53 TUDOR REVIVAL	CA. 1955	DOES NOT CONTRIBUTE DUE TO AGE
1205 S 3RD STREET	B BUILDING	01 NO DISTINCTIVE STYLE	CA. 1940	CONTRIBUTES
614-622 S 4TH STREET	B BUILDING	01 NO DISTINCTIVE STYLE	CA. 1941	DOES NOT CONTRIBUTE DUE TO AGE
711 S 4TH STREET	B BUILDING	01 NO DISTINCTIVE STYLE	CA. 1930	DOES NOT CONTRIBUTE DUE TO ALTERATION
712 S 4TH STREET	B BUILDING	01 NO DISTINCTIVE STYLE	CA. 1910	CONTRIBUTES
915 S 4TH STREET	B BUILDING	01 NO DISTINCTIVE STYLE	CA. 1925	CONTRIBUTES
710 S 5TH STREET	B BUILDING	65 BUNGALOW/CRAFTSMAN	CA. 1930	CONTRIBUTES
714 S 5TH STREET	B BUILDING	01 NO DISTINCTIVE STYLE	CA. 1930	CONTRIBUTES
601 S 5TH STREET	B BUILDING	53 TUDOR REVIVAL	CA. 1921	INDIVIDUALLY ELIGIBLE FOR LISTING IN THE NATIONAL REGISTER OF HISTORIC PLACES
615 S 5TH STREET	B BUILDING	72 INTERNATIONAL STYLE	CA. 1950	DOES NOT CONTRIBUTE DUE TO AGE
1310 S 5TH STREET	B BUILDING	01 NO DISTINCTIVE STYLE	CA. 1900	DOES NOT CONTRIBUTE DUE TO ALTERATION
916 S 6TH STREET	B BUILDING	80 OTHER	CA. 1965	DOES NOT CONTRIBUTE DUE TO AGE
206 E FRANTZ AVENUE	B BUILDING	01 NO DISTINCTIVE STYLE	CA. 1955	DOES NOT CONTRIBUTE DUE TO ALTERATION
508 E FRANTZ AVENUE	B BUILDING	01 NO DISTINCTIVE STYLE	CA. 1910	DOES NOT CONTRIBUTE DUE TO ALTERATION
101 A (N. PLANT) E ILLINOIS AVENUE	B BUILDING	01 NO DISTINCTIVE STYLE	CA. 1970	DOES NOT CONTRIBUTE DUE TO AGE
101 B (S. PLANT) E ILLINOIS AVENUE	B BUILDING	01 NO DISTINCTIVE STYLE	CA. 1970	DOES NOT CONTRIBUTE DUE TO AGE
101 C (E. PLANT) E ILLINOIS AVENUE	B BUILDING	01 NO DISTINCTIVE STYLE	CA. 1970	DOES NOT CONTRIBUTE DUE TO AGE
101 D E ILLINOIS AVENUE	B BUILDING	01 NO DISTINCTIVE STYLE	CA. 1970	DOES NOT CONTRIBUTE DUE TO AGE

APPENDIX B

APPENDIX B

BLACK RESIDENTS OF ENID BY NAME—EXTRACTED FROM 1910 CITY DIRECTORY LISTINGS FOR "COLORED" (C) RESIDENTS

Adamson, Jesse helper, rooms 117 W. Park Ave
Alexander, John & Carrie janitor, r. 222 S. 2nd
Alexander, William laborer, boards 222 S. 2nd
Allen Clement & Elmira farmer r. 313 E. Oklahoma Ave.
Allen, Stella c. b. 313 E. Oklahoma
Allison, William yardman 902 W. Maine Ave.
Alston, Paul cook Loewen Hotel, rms same
Anderson, James D. laborer b. 4134 S. Grant Ave.
Backstrom, Henry, principal Washington School, b. 707 E. Park
Bagby, Charles laborer, boards 315 S. 2nd
Banks, Claus porter rms. 121 E. Cherokee Ave
Banks, Devotion L F & Georgia, lawyer, r. 632 E. Park Ave.
Baptist Church, 424 S. 4th
Barton, Robert & Mattie porter, r. 218 W. Oklahoma Ave.
Bass, Mrs. Charlotte, r. 324 S. Independence
Bates, Oscar waiter, Loewen Hotel, rms. same
Bell, Edgar & Roberta, laborer, r. 302 E. Pine Ave.
Bibbins, John & Caroline laborer r. 610 E. Oklahoma Ave
Blanton, Mrs. Lulu b. 618 E. Park Ave.
Booker, Louis porter Hotel Billings
Booker, Osiah butcher, b. 111 E. Cherokee Ave
Boswell, Harrison porter 101 W. Maine b. 315 E. Pine Ave
Boyd, Robert porter Billings Barber Shop[, rms. 318 S. Independence Ave.
Brown, Edward cook b. 116 E. Park Ave
Brown, Henry porter rms. 222 E. Park Ave.
Brown, Mrs. Mary domestic 601 E. Elm Ave.
Buchanan, William & Willie laborer r. 216 W. Park Ave.
Burney, Charley & Minnie laborer r. 127 E. Cherokee Ave.
Burne, Elijah J. & Mary porter St. L & SF Ry. r. 328 E. Oklahoma Ave.
Byrne, Lynn waiter Loewen Hotel, rms. same
Calhoun, James blacksmith, rms. 319 S. 2nd
Caldwell, Henry & Luella laborer, r. 524 E. Oklahoma Ave
Calip, Henry & Dora laborer r. 523 N. 3d.
Campbell, Charles & Cora laborer r. 513 N. 3d
Carpenter, Ella domestic 214 E. 2d
Carrington, John & Lydia, farmer 631 E. Oklahoma Ave.
Carter August laborer, b. 314 E. Oklahoma
Carter, George A. & Irene G. contractor 620 S. Grand ave. r. same
Chestnut, Lena works Loewen Hotel, rms. same
Clump, Earl cook Hotel Billings
Collins George Missoura laborer, r. 701 E. Oklahoma Ave
Cook, Hayward C. (Hill & Cook - restaurant), r. 207 S. 2d

Cook, James & Gertrude, cook r. Market Ave. se corner 6th
Cooper, Ernest L. laborer rms. 127 W. Cherokee Ave.
Crumes, Oliver porter Owl Drug Store, b. 1202 W. Cherokee
Crup, Beverly & Annie porter CM Earnest, r. 116 W. Park Ave.
Crup, Sadie b. 116 W. Park
Daniel, Houston & Carrie porter IN Hudson, r 307 E. Maple
Daniels, James & Cora laborer r. Market Ave near. 6th
Davis, John laborer b. 315 S. 2nd
Davis, Warren waiter 413 S. Grand Ave. rms same
Deloach, Lafayette r. 911 E. Cherokee Ave.
Dickenson, Emily seamstress r. 220 S. 2d
Dickson, General laborer b. 523 N. 3d
Dickson, Mrs. Bertha b. 523 N. 3d
Dismuke Martin, waiter Loewen Hotel, r. same
Dixon, Mrs. Emma r. 218 S. 2d
Dixon Mrs. Manda r. 220 W. Oklahoma Ave.
Dixon, Roy & Jane laborer, r. 618 E. Park Ave
Dookley, Mrs. Lizzie rms. 324 S. Independence Ave
Duffy, James clerk C.S. Arnold rms. 214 E. Market Ave.
Dunn, Anthony fireman Loewen Hotel, rms. same
Edward, Alexander lab r. 307 S. 2d
Edwards, Mrs. Cammie r. 121 E. Cherokee
Edwards, Charles P waiter Loewen Hotel, rms same
Edwards, Frances b 307 S. 2d
Edwards, Robert porter b. 4013 E. Randolph Ave.
Eskridge Mrs. Mollie r. 302 E. Pine Ave
Evans, Mrs. Diana b. 315 E. Pine Ave.
Everett Harry H. & Mary cook, r. 316 E. Oklahoma Ave
Ewing Clarence b. rear 505 E. Oklahoma ave.
Ewing, Doke janitor b. 505 E. Oklahoma Ave
Ewing John lab r. 505 E. Oklahoma Ave
Ewing, John porter b. 505 E. Oklahoma Ave
First Baptist Church 508 E. Broadway
Ford, Bessie b 321 E. Oklahoma
Ford, Iva b 321 E. Oklahoma
Ford, Oliver laborer b 321 E. Oklahoma
Foster Alfred yardman, 1310 W. Oklahoma b same
Fox Mrs. Delia r. 218 W. Cherokee Ave
Franklin, Jefferson waiter Loewen Hotel, rms same
Freeman, Edward D. & Ella driver r. 520 S. 6th
Gaines, Harry lab rms. 701 E. Oklahoma Ave
Gilts, David domestic b. 228 E. Park Ave
Good, Clayton & Arelia laborer r. 121 W. Railroad Ave
Gordon, Samuel & Mollie laborer r. 314 E. Oklahoma Ave
Graves, Bertha student b. 331 E. Oklahoma Ave
Graves Flossie b. 331 E. Oklahoma Ave
Graves Opal b. 331 E. Oklahoma Ave

Gray Amanda b 314 S. Independence Ave
 Gray Mrs. Eliza r. 314 S. Independence Ave
 Gray, James cook Loewen Hotel rms. 131 E. Cherokee Ave.
 Gray, Ora b. 314 S. Independence Ave
 Gray Sadie b. 314 S. Independence Ave.
 Grimes, Thomas B. porter 124 W. Randolph Ave., r near. Water Works
 Guess, Glenn & Valrie porter r. 410 S. 7th
 Guest, Mrs. Annie r. 507 E. Oklahoma Ave
 Guest, Clarence laborer b. 507 E. Oklahoma Ave.
 Guest Joseph, student b. 507 E. Oklahoma Ave.
 Guest, Selma b. 507 E. Oklahoma Ave.
 Haack, Clarence porter Loewen Hotel rms. same
 Haas, Mrs. Mary r. rear 505 E. Oklahoma Ave.
 Harper, Mrs. Minnie b. 114 W. Park Ave
 Harris, Ellis & Clara laborer r. 222 W. Oklahoma Ave
 Harris, Fred dishwasher A.G. Ellis, rms. 708 N. Independence ave.
 Hauckins Elija chef Hotel Billings
 Hawkins William cook Grand Avenue Hotel b. same
 Hayes John Fireman Loewen Hotel rms. same
 Hayter Albert C. restaurant 415 S. Grand Ave rms. 127 W. Cherokee Ave
 Hellums, Mrs. Annie r. 324 S. Independence Ave
 Henderson, John, houseman Loewen Hotel rms. same
 Hicks, William H. & Maggie cook r. 224 S. 2d
 Hill, Alexander H. (Hill & Cook) r. 207 S. 2d
 Hill & Cook restaurant 207 S. 2d
 Hill, Tessie J. b. 911 E. Cherokee
 Hill, William laborer rms. 113 E. Cherokee Ave.
 Hinton, John W. porter billings Barber Shop rms. 413 S. Grand ave
 Hixon, Walter janitor Stephenson bldg. b. 121 E. Elm ave
 Hodvill, Stephen & May laborer r. 718 E. Market Ave.
 Hollows, Fred porter Loewen Hotel, rms. same
 Holmes, Mrs. Cherry r. 121 W. Railroad Ave
 Holt, Bert porter b. 219 W. Cherokee ave
 Holt, George & Lizzie laborer r. 219 W. Cherokee ave
 Holt, Halsey laborer b. 219 W. Cherokee ave
 Holt, Henry laborer A.B. Stephens & Co., b. 219 W. Cherokee Ave
 Holt, Izzetta b. 219 W. Cherokee ave
 Holt, Shirley porter Grand Avenue Hotel, b. 219 W. Cherokee ave
 Hubert John J. porter 222 N. Grand ave rms. 113 E. Cherokee ave
 Humphrey, Will & Fannie janitor Chamber of Commerce building r. 627 E. Park Ave
 Humphrey Rev. William & Hattie pastor Baptist Church r. 629 E. Park ave.
 Hunter, Oliver & Lizzie laborer r. 311 S. 2d
 Hutton, Mrs. Fannie r. 315 E. Pine ave
 Ireland, Rev. Moses A. & Emma pastor First Baptist Church r. Market ave se corner 6th
 Jacks, Mary domestic 612 S. Grand ave
 Jackson, Edward & Lizzie laborer r. 313 E. Oklahoma ave.
 Jackson, Mrs. Vilma r. 116 E. Park ave

James, Edward porter Van Noy Railroad News Co. rms. 127 W. Cherokee ave
Johnson, Albert & Matilda J. laborer r. 114 W. Park ave
Johnson, David & Ada lab r. 1010 N. 6th
Johnson, Rev. Louis J. barber 121 E. Randolph ave and pastor AME Church r. 707 E. Park ave
Jones, Charles E. & Bertha cook 222 N. Grand ave r. 117 W. Railroad
Jones, Hattie b. 110 W. Cherokee ave
Jones Ida b. 110 W. Cherokee Ave.
Jones, Rachel b. 110 W. Cherokee ave
Jones, Shed laborer b. 117 W. Railroad ave
Jones Sim porter Hotel Billings
Jones Timothy barber 417 S. Grand ave. rms 127 W. Cherokee ave.
Kemp, Doll hatter rms 307 N. Adams
King, Tishie r. 309 S. 2d
Lambert, Stephen & Ardie laborer r. 303 E. Maple ave.
Lampkins, Harvey laborer b. 701 E. Oklahoma Ave
Leary, James porter Hotel Billings
Lee, Dandy cook Loewen Hotel rms. same
Levell, Frank & Kate porter Hotel Billings rms. 319 S 2d
Lewis, Isaac laborer r. 222 E. Park ave
Lewis, Oscar & Katie laborer r. 524 S. 6th
London, Samuel lab rms. 309 S. 2d
Lott Lonnie E. & Lulu laborer r. 121 E. Cherokee ave
Lowe Benjamin W. & Beulah lab r. 612 E. Oklahoma ave
Luckett, Lizzie teacher Washington School b. 222 E. Park ave.
Lynn Jesse & Nettie laborer r. 216 N. 4th
McFalls, Mrs. Marie r. 532 E. Cherokee ave
Mallory Bros. Robert & Jesse pool hall 415 S. Grand ave.
(Mallory, Jess and Mallory Robert roomed at 415 S. Grand but were not listed as c)
Marsh, Mrs. Cora b. rear 505 E. Oklahoma ave
Marshall, Daisy domestic 423 W. Pine ave
Martin, Arthur lab b. 321 E. Oklahoma
Martin Eugene & Eliza lab r. 321 E. Oklahoma ave
Mason Frank porter Loewen Hotel rms. same
Mathews William lab rms. 224 S. 2d
Mayweathers, Jeremiah laborer rms. 121 E. Cherokee ave.
Midlock Rufus B. & Nellie lab r. 723 N. 4th
Miles Albert rms 415 S. Grand ave.
Milner, Charles lab b. 311 S. 2d
Minor, Charles helper Hotel Billings
Moore William M. & Adelia lab Enid City Ry Co. B. 117 W. Railroad ave
Morgan, Henry b. 121 Railroad ave. W
Morgan, John W. lab r. 302 E. Pine ave
Morris Clay & Emma waiter r. 304 E. Pine ave.
Murray Louis porter 123 S. Grand ave. b. 117 W. Park ave.
Neely Luther porter Grand Avenue Hotel b. same
Nolan, Robert B. lab rms 127 W. Cherokee ave.
Norwood Mrs. Eunice r. 213 S. 2d

O'Bannon John lab b. 313 E. Pine ave
O'Bannon, Lemuel lab r. 313 E. Pine ave
O'Bannon, Walter lab b. 313 E. Pine Ave.
Oliver , Conrad & Zora porter r. 526 E. Oklahoma ave.
Oten, Peter & Louise restaurant 413 S. Grand ave. r. 318 S. Independence ave.
Overall, Joseph porter Mill Bros. rms 113 E. Cherokee ave.
Patton, Theodore & Jessie lab r. 528 S. 6th
Payne James hostler Mehew Bros rms 309 S. 2d
Peavy, Harry & Emma lab r. 116 W. Cherokee ave
Peavy Henry lab b. 116 W. Cherokee ave
Peavy, Mrs. Mary b. 116 W. Cherokee ave.
Penny Ollie & Lucinda phys 212 E. Maine, r. 509 E. Market
Peppers, Nellie b. 524 S. 6th
Pitts, Fred & Etta porter r. 217 W. Cherokee Ave
Queen, Mrs. Ada restaurant 111 E. Cherokee ave. r. same
Randall, George lab b. 620 E Park ave.
Ransom, William, musician rms 121 E. Cherokee ave.
Reed, Belle b. 213 S. 2d
Reed, Osie L. teacher Washington School b. 707 E. Park ave.
Reese Rowann b. 610 LE. Oklahoma ave
Reeves Joseph lab b. 610 E. Oklahoma a
Reeves, mrs. Laura r. 222 E. Park ave
Reeves Samuel & Mattie lab r. 610 E. Oklahoma ave.
Reynolds, Walter A. & Julia hand laundry 207 S. 2d r. 113 E. Cherokee ave.
Rice, Albert janitor Stephenson bldg. rms. 409 same
Riley, Lon & Ella porter Mill Bros. laborer 121 E. Elm Ave.
Rinehart William janitor S.H. Kress & Co.
Rivers Homer, porter rms. 309 S. 2d
Robinson, James laborer rms. 224 S. 2d
Robinson Morgan laborer rms. 127 W. Cherokee ave
Rogers Mrs. Arrie r. 319 S. 2d
Rogers Joseph cook Loewen Hotel rms. same
Roper William laborer b. 315 S. 2d
Ross, George servant 502 Pine ave.
Ross, Mrs. Maria r. 631 E. Park ave.
Ross Shepard janitor b. 631 E. Park Ave.
Rucker, Mrs. Amelia b. 911 E. Cherokee ave
Rucker Charles H. lab. rms. 415 S. Grand ave.
Sanford, Mrs. Rachel b. 514 E. Oklahoma Ave.
Sawyer Solomon lab. rms. 116 E. Park ave.
Scott, Mrs. Laura r. 131 E. Cherokee ave.
Sellers, Benjamin laborer b. 413 S. grand ave.
Sharp, Joseph E. & Lucy teamster City Scavenger Dept. r. 224 W. Oklahoma ave.
Simpson, Quitman lab b. 520 S. 6th
Simpson, Mrs. Sarah cook 1310 W. Oklahoma ave
Sims Mrs. Amanda r. 324 S. Independence ave.
Smith, Mrs. Bell r. 220 N. 4th

Smith, Charles lab rms. 415 S. Grand ave.
 Smith, George lab rooms 113 E. Cherokee ave.
 Smith, George M. barber L.J. Johnson b. 320 W. Oklahoma
 Smith, John fireman rms. 113 E. Cherokee ave.
 Smith, Mittie dressmaker b. 319 S. 2d
 Smith Nicholas lab rms. 113 E. Cherokee ave.
 Smith, Perry & Ritta lab r. 1006 N. 6th
 Smith, Thomas porter Vreeland Studio b. 210 E. Maine ave.
 Steele, Brooks porter M&B Drug Co. b. 318 W. Broadway
 Stemmons, George W. & Lottie lab. r. 402 E. Oklahoma ave
 Stewart, Charles, lab. b. 410 S. 7th
 Stumann, Charles & Pearl lab. r. 620 E. Park ave.
 Swanson, Mary domestic Hotel Billings
 Terry James lab. b. 413 S. Grand ave.
 Thomas, Anderson porter E. Klein & Co. rms. W. Cherokee ave.
 Thoms, Mrs. Fannie r. 513 N. 3d
 Thompkins, Mrs. Anna r. 127 W. Cherokee ave.
 Trimble, Mrs. Amanda dressmaker b. 319 S. 2d
 Vandorf, Ed porter 207 W. Randolph ave. b. 721 E. Elm ave
 Vickers Edd & Lillie barber r. 121 E. Elm ave.
 Wade Thomas & Lottie news agent r. 316 E. Oklahoma ave.
 Waller, Otis & Mabel lab b. 532 E. Cherokee ave
 Walls, Mrs. Lucy r. 218 W. Cherokee ave
 Ward, Wade & Rebecca porter r. 111 E. Cherokee ave.
 Warner, Colonel & Susie laborer r. 314 E. Oklahoma ave
 Warner Mrs. Mary b. 314 E. Oklahoma Ave.
 Warr Mrs. Victoria r. 220 W. Cherokee ave.
 Warren John & Mary porter Meibergen & Godschalk r. 522 E. Oklahoma ave.
 Washington, Birdell helper Hotel Billings
 Washington Edward waiter Loewen Hotel rms. same
 Washington George & Mattie janitor Oklahoma State Bank r. 631 E. Market ave.
 Washington Melissa domestic b. 315 S. 2d
 Washington school Market ave. ne cor 6th
 Wasters Mrs. Dicie laundress r. 117 W. Park ave.
 Weatherford Melissa b. 507 E. Oklahoma ave.
 Weaver, Wm. porter Hotel Billings.
 Wells, Retta b. 218 W. Cherokee ave.
 Wesley Richard O & Mary restaurant 315 S. 2d r. same
 West Fred cook Loewen Hotel rms. same.
 Wilhite Joseph S. waiter Loewen Hotel rms. same
 Williams Mrs. Annie domestic Bonair Hotel rms 113 E. Cherokee
 Williams Cute porter 106 N. Independence ave. rms. 311 S. 2d
 Williams Fred porter Washburn Cigar Co. rms. 415 S. Grand ave
 Williams George cook rms. 121 E. Elm Ave
 Williams Harry porter 105 W. Maine ave. rms 413 S. Grand
 Williams Isaac & Annie porter Bonair Hotel rms. 113 E. Cherokee ave.
 Williams James laborer r. 513 N. 3d

Williams James laborer b. 410 S. 7th
Williams Reuben & Laura laborer r. 217 S. 2d
Williams, Robert & Minnie fireman r. 401 E. Locust ave
Williams Wm. M & Saphronia R. r. 1116 E. Maine ave.
Wormley, Charles L. & Zana waiter Loewen Hotel rms. 304 E. Pine ave.
Yancy Horace porter b. 723 N. 4th
Yarbrough Alice b 714 E. Park ave
Yarbrough Anthony & Florence laborer r. 714 E. Park ave.
Yarbrough James laborer r. rear 701 E. Oklahoma ave.
Yates Charles & Malinda laborer r. 331 E. Oklahoma ave.
Young Frank & Ethel porter b. 911 E. Cherokee ave.

APPENDIX C

APPENDIX C

BLACK RESIDENTS OF ENID BY ADDRESS—EXTRACTED FROM 1910 CITY DIRECTORY LISTINGS FOR "COLORED" (C) RESIDENTS

S. 2nd

Carpenter, Ella domestic 214 E. 2d (says E but probably is S)
Alexander, John & Carrie janitor, r. 222 S. 2nd
Alexander, William laborer, boards 222 S. 2nd
Bagby, Charles laborer, boards 315 S. 2nd
Cahoun, James blacksmith, rms. 319 S. 2nd
Cook, Hayward C. (Hill & Cook - restaurant), r. 207 S. 2d
Davis, John laborer b. 315 S. 2nd
Dickenson, Emily seamstress r. 220 S. 2d
Dixon, Mrs. Emma r. 218 S. 2nd
Edward, Alexander lab r. 307 S. 2d
Edwards, Frances b 307 S. 2d
Hicks, William H. & Maggie cook r. 224 S. 2d
Hill, Alexander H. (Hill & Cook) r. 207 S. 2d
Hill & Cook restaurant 207 S. 2d
Hunter, Oliver & Lizzie laborer r. 311 S. 2d
King, Tishie r. 309 S. 2d
Levell, Frank & Kate porter Hotel Billings rms. 319 S 2d
London, Samuel lab rms. 309 S. 2d
Mathews William lab rms. 224 S. 2d
Milner, Charles lab b. 311 S. 2d
Norwood Mrs. Eunice r. 213 S. 2d
Payne James hostler Mehew Bros rms 309 S. 2d
Reed, Belle b. 213 S. 2d
Rivers Homer, porter rms. 309 S. 2d
Robinson, James laborer rms. 224 S. 2d
Rogers Mrs. Arrie r. 319 S. 2d
Roper William laborer b. 315 S. 2d
Smith, Mittie dressmaker b. 319 S. 2d
Trimble, Mrs. Amanda dressmaker b. 319 S. 2d
Washington Melissa domestic b. 315 S. 2d
Wesley Richard O & Mary restaurant 315 S. 2d r. same
Williams Cute porter 106 N. Independence ave. rms. 311 S. 2d
Williams Reuben & Laura laborer r. 217 S. 2d

N. 3rd

Calip, Henry & Dora laborer r. 523 N. 3d.
Campbell, Charles & Cora laborer r. 513 N. 3d
Dickson, General laborer b. 523 N. 3d
Dickson, Mrs. Bertha b. 523 N. 3d
Thoms, Mrs. Fannie r. 513 N. 3d
Williams James laborer r. 513 N 3d

S. 4th

Baptist Church, 424 S. 4th
Lynn Jesse & Nettie laborer r. 216 N. 4th
Midlock Rufus B. & Nellie lab r. 723 N. 4th
Smith, Mrs. Bell r. 220 N. 4th
Yancy Horace porter b. 723 N. 4th

N. 6th

Johnson, David & Ada lab r. 1010 N. 6th
Smith, Perry & Ritta lab r. 1006 N. 6th

S. 6th

Freeman, Edward D. & Ella driver r. 520 S. 6th
Lewis, Oscar & Katie laborer r. 524 S. 6th
Patton, Theodore & Jessie lab r. 528 S. 6th
Peppers, Nellie b. 524 S. 6th
Simpson, Quitman lab b. 520 S. 6th

S. 7th

Guess, Glenn & Valrie porter r. 410 S. 7th
Stewart, Charles, lab. b. 410 S. 7th
Williams James laborer b. 410 S. 7th

N. Adams

Kemp, Doll hatter rms 307 N. Adams

E. Broadway

First Baptist Church 508 E. Broadway

W. Broadway

Steele, Brooks porter M&B Drug Co. b. 318 W. Broadway

W. Cherokee

Cooper, Ernest L. laborer rms. 127 W. Cherokee Ave.
Crumes, Oliver porter Owl Drug Store, b. 1202 W. Cherokee
Fox Mrs. Delia r. 218 W. Cherokee Ave
Hayter Albert C. restaurant 415 S. Grand Ave rms. 127 W. Cherokee Ave
Holt, Bert porter b. 219 W. Cherokee ave
Holt, George & Lizzie laborer r. 219 W. Cherokee ave
Holt, Halsey laborer b. 219 W. Cherokee ave
Holt, Henry laborer A.B. Stephens & Co., b. 219 W. Cherokee Ave
Holt, Izetta b. 219 W. Cherokee ave
Holt, Shirley porter Grand Avenue Hotel, b. 219 W. Cherokee ave
James, Edward porter Van Noy Railroad News Co. rms. 127 W. Cherokee ave
Jones, Hattie b. 110 W. Cherokee ave
Jones Ida b. 110 W. Cherokee Ave.
Jones, Rachel b. 110 W. Cherokee ave
Jones Timothy barber 417 S. Grand ave. rms 127 W. Cherokee ave.

Nolan, Robert B. lab rms 127 W. Cherokee ave.
Peavy, Harry & Emma lab r. 116 W. Cherokee ave
Peavy Henry lab b. 116 W. Cherokee ave
Peavy, Mrs. Mary b. 116 W. Cherokee ave.
Pitts, Fred & Etta porter r. 217 W. Cherokee Ave
Robinson Morgan laborer rms. 127 W. Cherokee ave
Thomas, Anderson porter E. Klein & Co. rms. W. Cherokee ave.
Thompkins, Mrs. Anna r. 127 W. Cherokee ave.
Walls, Mrs. Lucy r. 218 W. Cherokee ave
Warr Mrs. Victoria r. 220 W. Cherokee ave
Wells, Retta b. 218 W. Cherokee ave.

E. Cherokee

Banks, Claus porter rms. 121 E. Cherokee Ave
Booker, Osiah butcher, b. 111 E. Cherokee Ave
Burney, Charley & Minnie laborer r. 127 E. Cherokee Ave
Deloach, Lafayette r. 911 E. Cherokee Ave.
Edwards, Mrs. Cammie r. 121 E. Cherokee
Gray, James cook Loewen Hotel rms. 131 E. Cherokee Ave.
Hill, Tessie J. b. 911 E. Cherokee
Hill, William laborer rms. 113 E. Cherokee Ave.
Hubert John J. porter 222 N. Grand ave rms. 113 E. Cherokee ave
Lott Lonnie E. & Lulu laborer r. 121 E. Cherokee ave
McFalls, Mrs. Marie r. 532 E. Cherokee ave
Mayweathers, Jeremiah laborer rms. 121 E. Cherokee ave.
Overall, Joseph porter Mill Bros. rms 113 E. Cherokee ave.
Queen, Mrs. Ada restaurant 111 E. Cherokee ave. r. same
Ransom, William, musician rms 121 E. Cherokee ave.
Reynolds, Walter A. & Julia hand laundry 207 S. 2d r. 113 E. Cherokee ave.
Rucker, Mrs. Amelia b. 911 E. Cherokee ave
Scott, Mrs. Laura r. 131 E. Cherokee ave.
Smith, George lab rms 113 E. Cherokee ave.
Smith, John fireman rms. 113 E. Cherokee ave.
Smith Nicholas lab rms. 113 E. Cherokee ave.
Waller, Otis & Mabel lab b. 532 E. Cherokee ave
Ward, Wade & Rebecca porter r. 111 E. Cherokee ave.
Williams Mrs. Annie domestic Bonair Hotel rms 113 E. Cherokee.
Williams Isaac & Annie porter Bonair Hotel rms. 113 E. Cherokee ave.
Young Frank & Ethel porter b. 911 E. Cherokee ave.

E. Elm

Brown, Mrs. Mary domestic 601 E. Elm Ave.
Hixon, Walter janitor Stephenson bldg. b. 121 E. Elm ave
Riley, Lon & Ella porter Mill Bros. r. 121 E. Elm Ave.
Vandorf, Ed porter 207 W. Randolph ave. b. 721 E. Elm ave
Vickers Edd & Lillie barber r. 121 E. Elm ave.
Williams George cook rms. 121 E. Elm Ave

Grand Ave.

Carter, George A. & Irene G. contractor 620 S. Grand ave. r. same
Davis, Warren waiter 413 S. Grand Ave. rms same
Hinton, John W. porter billings Barber Shop rms. 413 S. Grand ave
Jacks, Mary domestic 612 S. Grand ave
Mallory Bros. Robert & Jesse pool hall 415 S. Grand ave.
(Mallory, Jess and Mallory Robert roomed at 415 S. Grand but were not listed as c)
Miles Albert rms 415 S. Grand ave
Rucker Charles H. lab. rms. 415 S. Grand ave.
Sellers, Benjamin laborer b. 413 S. grand ave.
Smith, Charles lab rms. 415 S. Grand ave.
Terry James lab. b. 413 S. Grand ave.
Williams Fred porter Washburn Cigar Co. rms. 415 S. Grand ave
Terry James lab. b. 413 S. Grand ave.
Williams Harry porter 105 W. Maine ave. rms 413 S. Grand

Grant

Anderson, James D. laborer b. 4134 S. Grant Ave.

S. Independence

Bass, Mrs. Charlotte, r. 324 S. Independence
Boyd, Robert porter Billings Barber Shop, rms. 318 S. Independence Ave.
Dookley, Mrs. Lizzie rms. 324 S. Independence Ave
Gray Amanda b 314 S. Independence Ave
Gray Mrs. Eliza r. 314 S. Independence Ave
Gray, Ora b. 314 S. Independence Ave
Gray Sadie b. 314 S. Independence Ave.
Harris, Fred dishwasher A.G. Ellis, rms. 708 N. Independence ave.
Hellums, Mrs. Annie r. 324 S. Independence Ave
Oten, Peter & Louise restaurant 413 S. Grand ave. r. 318 S. Independence ave.
Sims Mrs. Amanda r. 324 S. Independence ave.

E. Locust Ave.

Williams, Robert & Minnie fireman r. 401 E. Locust ave

E. Maine

Smith, Thomas porter Vreeland Studio b. 210 E. Maine ave.
Williams Wm. M & Saphronia R. r. 1116 E. Maine ave.

W. Maine Ave.

Allison, William yardman 902 W. Maine Ave.

E. Maple

Lambert, Stephen & Ardie laborer r. 303 E. Maple ave.
Daniel, Houston & Carrie porter IN Hudson, r 307 E. Maple

E. Market (Owen K. Garriott)

Cook, James & Gertrude, cook r. Market Ave. se corner 6th
Daniels, James & Cora laborer r. Market Ave near 6th
Duffy, James clerk C.S. Arnold rms. 214 E. Market Ave.
Hodvill, Stephen & May laborer r. 718 E. Market Ave.
Ireland, Rev. Moses A. & Emma pastor First Baptist Church r. Market ave se corner 6th
Penny Ollie & Lucinda phys 212 E. Maine, r. 509 E. Market
Washington George & Mattie janitor Oklahoma State Bank r. 631 E. Market ave.
Washington school Market ave. ne corner 6th

W. Oklahoma

Barton, Robert & Mattie porter, r. 218 W. Oklahoma Ave.
Dixon Mrs. Manda r. 220 W. Oklahoma Ave.
Foster Alfred yardman, 1310 W. Oklahoma b same
Harris, Ellis & Clara laborer r. 222 W. Oklahoma Ave
Sharp, Joseph E. & Lucy teamster City Scavenger Dept. r. 224 W. Oklahoma ave.
Simpson, Mrs. Sarah cook 1310 ave
Smith, George M. barber L.J. Johnson b. 320 W. Oklahoma

E. Oklahoma

Allen Clement & Elmira farmer r. 313 E. Oklahoma Ave.
Allen, Stella c. b. 313 E. Oklahoma
Bibbins, John & Caroline laborer r. 610 E. Oklahoma Ave
Burne, Elijah J. & Mary porter St. L. & SF Ry. r. 328 E. Oklahoma Ave.
Caldwell, Henry & Luella laborer, r. 524 E. Oklahoma Ave
Carrington, John & Lydia, farmer 631 E. Oklahoma Ave.
Carter August laborer, b. 314 E. Oklahoma
Collins George Missoura laborer, r. 701 E. Oklahoma Ave
Everett Harry H. & Mary cook, r. 316 E. Oklahoma Ave
Ewing Clarence b. rear 505 E. Oklahoma ave.
Ewing, Doke janitor b. 505 E. Oklahoma Ave
Ewing John lab r. 505 E. Oklahoma Ave
Ewing, John porter b. 505 E. Oklahoma Ave
Ford, Bessie b 321 E. Oklahoma
Ford, Iva b 321 E. Oklahoma
Ford, Oliver laborer b 321 E. Oklahoma
Gaines, Harry lab rms. 701 E. Oklahoma Ave
Gordon, Samuel & Mollie laborer r. 314 E. Oklahoma Ave
Graves, Bertha student b. 331 E. Oklahoma Ave
Graves Flossie b. 331 E. Oklahoma Ave
Graves Opal b. 331 E. Oklahoma Ave
Guest, Mrs. Annie r. 507 E. Oklahoma Ave
Guest, Clarence laborer b. 507 E. Oklahoma Ave.
Guest Joseph, student b. 507 E. Oklahoma Ave.
Guest, Selma b. 507 E. Oklahoma Ave.
Haas, Mrs. Mary r. rear 505 E. Oklahoma Ave.
Jackson, Edward & Lizzie laborer r. 313 E. Oklahoma ave.

Lampkins, Harvey laborer b. 701 E. Oklahoma Ave
Lowe Benjamin W. & Beulah lab r. 612 E. Oklahoma ave
Marsh, Mrs. Cora b. rear 505 E. Oklahoma ave
Martin, Arthur lab b. 321 E. Oklahoma
Martin Eugene & Eliza lab r. 321 E. Oklahoma ave
Oliver , Conrad & Zora porter r. 526 E. Oklahoma ave.
Reese Rowann b. 610 E. Oklahoma ave
Reeves Joseph lab b. 610 E. Oklahoma a
Reeves Samuel & Mattie lab r. 610 E. Oklahoma ave.
Sanford, Mrs. Rachel b. 514 E. Oklahoma Ave.
Stemmons, George W. & Lottie lab. r. 402 E. Oklahoma ave
Wade Thomas & Lottie news agent r. 316 E. Oklahoma ave.
Warner, Colonel & Susie laborer r. 314 E. Oklahoma ave
Warner Mrs. Mary b. 314 E. Oklahoma Ave.
Warren John & Mary porter Meibergen & Godschalk r. 522 E. Oklahoma ave.
Weatherford Melissa b. 507 E. Oklahoma ave.
Yarbrough James laborer r. rear 701 E. Oklahoma ave.
Yates Charles & Malinda laborer r. 331 E. Oklahoma ave.

E. Park

Backstrom, Henry, principal Washington School, b. 707 E. Park
Banks, Devotion L F & Georgia, lawyer, r. 632 E. Park Ave
Blanton, Mrs. Lulu b. 618 E. Park Ave.
Brown, Edward cook b. 116 E. Park Ave
Brown, Henry porter rms. 222 E. Park Ave.
Dixon, Roy & Jane laborer, r. 618 E. Park Ave
Gilts, David domestic b. 228 E. Park Ave
Humphrey, Will & Fannie janitor Chamber of Commerce building r. 627 E. Park Ave
Humphrey Rev. William & Hattie pastor Baptist Church r. 629 E. Park ave.
Jackson, Mrs. Vilma r. 116 E. Park ave
Johnson, Rev. Louis J. barber 121 E. Randolph ave and pastor AME Church r. 707 E. Park ave
Lewis, Isaac laborer r. 222 E. Park ave
Lockett, Lizzie teacher Washington School b. 222 E. Park ave.
Randall, George lab b. 620 E Park ave.
Reed, Osie L. teacher Washington School b. 707 E. Park ave.
Reeves, Mrs. Laura r. 222 E. Park ave
Ross, Mrs. Maria r. 631 E. Park ave.
Ross Shepard janitor b. 631 E. Park Ave.
Sawyer Solomon lab. rms. 116 E. Park ave.
Stumann, Charles & Pearl lab. r. 620 E. Park ave.
Yarbrough Alice b 714 E. Park ave
Yarbrough Anthony & Florence laborer r. 714 E. Park ave.

W. Park

Adamson, Jesse helper, rms 117 W. Park Ave
Buchanan, William & Willie laborer r. 216 W. Park Ave.
Crup, Beverly & Annie porter CM Earnest, r. 116 W. Park Ave.

Crup, Sadie b. 116 W. Park
Harper, Mrs. Minnie b. 114 W. Park Ave
Johnson, Albert & Matilda J. laborer r. 114 W. Park ave
Murray Louis porter 123 S. Grand ave. b. 117 W. Park ave.
Waters Mrs. Dicie laundress r. 117 W. Park ave.

E. Pine

Bell, Edgar & Roberta, laborer, r. 302 E. Pine Ave.
Boswell, Harrison porter 101 W. Maine b. 315 E. Pine Ave
Eskridge Mrs. Mollie r. 302 E. Pine Ave
Evans, Mrs. Diana b. 315 E. Pine Ave.
Hutton, Mrs. Fannie r. 315 E. Pine ave
Morgan, John W. lab r. 302 E. Pine ave
Morris Clay & Emma waiter r. 304 E. Pine ave.
O'Bannon John lab b. 313 E. Pine ave
O'Bannon, Lemuel lab r. 313 E. Pine ave
O'Bannon, Walter lab b. 313 E. Pine Ave.
Wormley, Charles L. & Zana waiter Loewen Hotel rms. 304 E. Pine ave

W. Pine

Marshall, Daisy domestic 423 W. Pine ave
Ross, George servant 502 Pine ave.

Railroad

Good, Clayton & Arelia laborer r. 121 W. Railroad Ave
Holmes, Mrs. Cherry r. 121 W. Railroad Ave
Jones, Charles E. & Bertha cook 222 N. Grand ave r. 117 W. Railroad
Jones, Shed laborer b. 117 W. Railroad ave
Moore William M. & Adelia lab Enid City Ry Co. B. 117 W. Railroad ave
Morgan, Henry b. 121 Railroad ave. W

E. Randolph

Edwards, Robert porter b. 4013 E. Randolph Ave

Hotel workers - roomed at same

Alston, Paul cook Loewen Hotel, rms same
Bates, Oscar waiter, Loewen Hotel, rms. same
Booker, Louis porter Hotel Billings
Byrne, Lynn waiter Loewen Hotel, rms. same
Chestnut, Lena wks Loewen Hotel, rms. same
Clump, Earl cook Hotel Billings
Dismuke Martin, waiter Loewen Hotel, r. same
Dunn, Anthony fireman Loewen Hotel, rms. same
Edwards, Charles P waiter Loewen Hotel, rms same
Franklin, Jefferson waiter Loewen Hotel, rms same
Haack, Clarence porter Loewen Hotel rms. same
Hauckins Elija chef Hotel Billings

Hawkins William cook Grand Avenue Hotel b. same
Hayes John Fireman Loewen Hotel rms. same
Henderson, John, houseman Loewen Hotel rms. same
Hollows, Fred porter Loewen Hotel, rms. same
Jones Sim porter Hotel Billings
Leary, James porter Hotel Billings
Lee, Dandy cook Loewen Hotel rms. same
Mason Frank porter Loewen Hotel rms. same
Minor, Charles helper Hotel Billings
Neely Luther porter Grand Avenue Hotel b. same
Rogers Joseph cook Loewen Hotel rms. same
Swanson, Mary domestic Hotel Billings
Washington, Birdell helper Hotel Billings
Washington Edward waiter Loewen Hotel rms. same
Weaver, Wm. porter Hotel Billings.
West Fred cook Loewen Hotel rms. same.
Wilhite Joseph S. waiter Loewen Hotel rms. same

Odd addresses or no addresses

Grimes, Thomas B. porter 124 W. Randolph Ave., r near. Water Works
Rice, Albert janitor Stephenson bldg. rms. 409 same
Rinehart William janitor S.H. Kress & Co.

APPENDIX D

APPENDIX D

PROPERTIES AND HISTORIC NAMES IN THE SOUTHERN HEIGHTS/EAST PARK NEIGHBORHOOD

ADDRESS	RESOURCE NAME	YEAR	SIGNIFICANCE DESCRIPTION
710 S 2ND STREET	CONTINENTAL TREND RESOURCES, INC.	1980	DOES NOT CONTRIBUTE DUE TO AGE
724 S 2ND STREET	COMMUNICATION FACILITY	1985	DOES NOT CONTRIBUTE DUE TO AGE
802 S 2ND STREET	BUSINESS	1975	DOES NOT CONTRIBUTE DUE TO AGE
900 S 2ND STREET	HOUSE	1975	DOES NOT CONTRIBUTE DUE TO AGE
901 S 2ND STREET	GEHAY GROCERY	1949	DOES NOT CONTRIBUTE DUE TO AGE & ALTERATION
917 S 2ND STREET	JESSE WEST - ARTHUR & ALICE DODD HOUSE	1940	DOES NOT CONTRIBUTE DUE TO ALTERATION
1002 S 2ND STREET	JEREMIAH NILES HOUSE	1930	DOES NOT CONTRIBUTE DUE TO ALTERATION
1024 S 2ND STREET	ALMEDA AYLES - RAY GEORGE HOUSE	1925	CONTRIBUTES
1114 S 2ND STREET	G.A. ALLEN - GUY H. SIMPSON HOUSE	1925	DOES NOT CONTRIBUTE DUE TO ALTERATION
1202 S 2ND STREET	ARISTY HORT HOUSE	1925	DOES NOT CONTRIBUTE DUE TO ALTERATION
1214 S 2ND STREET	JESS MILLER - MRS. NORA FOSTER HOUSE	1910	CONTRIBUTES
613 S 3RD STREET	BOND JANITOR SUPPLY CO.	1950	DOES NOT CONTRIBUTE DUE TO AGE
810 S 3RD STREET	MRS. LEAH V. COOPER - LEONARD GODWIN HOUSE	1925	CONTRIBUTES
1201 S 3RD STREET	FIRST INDIAN CHURCH	1955	DOES NOT CONTRIBUTE DUE TO AGE
1205 S 3RD STREET	FIRST BAPTIST CHAPEL	1940	CONTRIBUTES
614-622 S 4TH STREET	APARTMENTS	1941	DOES NOT CONTRIBUTE DUE TO AGE
711 S 4TH STREET	MRS. LIZZIE B KING - MRS. LUCILLE ROSS HOUSE	1930	DOES NOT CONTRIBUTE DUE TO ALTERATION
712 S 4TH STREET	JOSEPH JACKSON HOUSE	1910	CONTRIBUTES

ADDRESS	RESOURCE NAME	YEAR	SIGNIFICANCE DESCRIPTION
915 S 4TH STREET	L.C. DODD - AUBREY MILLER HOUSE	1925	CONTRIBUTES
710 S 5TH STREET	HOUSE	1930	CONTRIBUTES
714 S 5TH STREET	FULLER - BURNS - POLLARD HOUSE	1930	CONTRIBUTES
801 S 5TH STREET	BOOKER T. WASHINGTON SCHOOL	1921	INDIVIDUALLY ELIGIBLE FOR LISTING IN THE
815 S 5TH STREET	CARVER ELEMENTARY SCHOOL	1950	DOES NOT CONTRIBUTE DUE TO AGE
1310 S 5TH STREET	HOUSE	1900	DOES NOT CONTRIBUTE DUE TO ALTERATION
916 S 6TH STREET	HOUSE	1965	DOES NOT CONTRIBUTE DUE TO AGE
206 E FRANTZ AVENUE	HOUSE	1955	DOES NOT CONTRIBUTE DUE TO ALTERATION
508 E FRANTZ AVENUE	ANNIE MUMFORD HOUSE	1910	DOES NOT CONTRIBUTE DUE TO ALTERATION
101 A (N. PLANT) E ILLINOIS AVENUE	SINGER STEEL, INC.	1970	DOES NOT CONTRIBUTE DUE TO AGE
101 B (S. PLANT) E ILLINOIS AVENUE	SINGER STEEL, INC.	1970	DOES NOT CONTRIBUTE DUE TO AGE
101 C (E. PLANT) E ILLINOIS AVENUE	SINGER STEEL, INC.	1970	DOES NOT CONTRIBUTE DUE TO AGE
101 D E ILLINOIS AVENUE	SINGER STEEL, INC.	1970	DOES NOT CONTRIBUTE DUE TO AGE
202 E ILLINOIS AVENUE	DON C. HILL - CLARENCE THOMPSON HOUSE	1930	DOES NOT CONTRIBUTE DUE TO ALTERATION
206 E ILLINOIS AVENUE	WILLIAM B. ROGERS - GEORGE WHITEMORE HOUSE	1928	DOES NOT CONTRIBUTE DUE TO ALTERATION
209 E ILLINOIS AVENUE	JOHN ZIMMERMAN LAND	1970	DOES NOT CONTRIBUTE DUE TO AGE
219 E ILLINOIS AVENUE	O'NEAL - CLOTHIER - GILSON HOUSE	1930	DOES NOT CONTRIBUTE DUE TO ALTERATION
222 E ILLINOIS AVENUE	CRAFT - BURT - COCHRAN HOUSE	1910	DOES NOT CONTRIBUTE DUE TO ALTERATION
229 E ILLINOIS AVENUE	BERT RUCKER - MRS. LIZZIE KING HOUSE	1928	CONTRIBUTES
230 E ILLINOIS AVENUE	HOUSE	1920	CONTRIBUTES

ADDRESS	RESOURCE NAME	YEAR	SIGNIFICANCE DESCRIPTION
302 E ILLINOIS AVENUE	HOUSE	1975	DOES NOT CONTRIBUTE DUE TO AGE
306 E ILLINOIS AVENUE	HARRY F. SMITH - SAM NORDYKE HOUSE	1930	CONTRIBUTES
307 E ILLINOIS AVENUE	ELMER D. GREEN - EMERY G. COCHRAN HOUSE	1930	CONTRIBUTES
310 E ILLINOIS AVENUE	OTIS E. STARKY - WILLIAM F. TINNEMAN HOUSE	1930	CONTRIBUTES
322 E ILLINOIS AVENUE	HOUSE	1955	DOES NOT CONTRIBUTE DUE TO AGE
402 E ILLINOIS AVENUE	KENNETH PLETZER HOUSE	1935	DOES NOT CONTRIBUTE DUE TO ALTERATION
410 E ILLINOIS AVENUE	ANTONIO SANCHEZ HOUSE	1940	CONTRIBUTES
411 E ILLINOIS AVENUE	SCHOOL	1936	INDIVIDUALLY ELIGIBLE FOR LISTING IN THE
454 E ILLINOIS AVENUE	ATLAS TAYLOR - JOHN F. ADAMS HOUSE	1925	CONTRIBUTES
463 E ILLINOIS AVENUE	HATTIE WILLIAMS - HATTIE MAXWELL HOUSE	1930	DOES NOT CONTRIBUTE DUE TO ALTERATION
467 E ILLINOIS AVENUE	MITTIE KING - TISHEY RILEY HOUSE	1955	DOES NOT CONTRIBUTE DUE TO AGE
476 E ILLINOIS AVENUE	ROBERT BAKER - S. HAZEL THOMPSON HOUSE	1935	DOES NOT CONTRIBUTE DUE TO ALTERATION
501 E ILLINOIS AVENUE	HOUSE	1960	DOES NOT CONTRIBUTE DUE TO AGE & ALTERATION
509 E ILLINOIS AVENUE	ALBEY H. HARRISON - REGINALD MOSBY HOUSE	1925	CONTRIBUTES
522 E ILLINOIS AVENUE	HOUSE	1895	DOES NOT CONTRIBUTE DUE TO ALTERATION
523 E ILLINOIS AVENUE	JOHN L. WATKINS - ODA STARNES HOUSE	1920	DOES NOT CONTRIBUTE DUE TO AGE
526 E ILLINOIS AVENUE	HOUSE	1955	DOES NOT CONTRIBUTE DUE TO AGE
605 E ILLINOIS AVENUE	HOUSE	1965	DOES NOT CONTRIBUTE DUE TO AGE
610 E ILLINOIS AVENUE	MARY BRANCH HOUSE	1940	DOES NOT CONTRIBUTE DUE TO ALTERATION
625 E ILLINOIS AVENUE	HOUSE	1965	DOES NOT CONTRIBUTE DUE TO AGE

ADDRESS	RESOURCE NAME	YEAR	SIGNIFICANCE DESCRIPTION
204 E INDIANA AVENUE	JAMES A. WHITLEY	1930	CONTRIBUTES
205 E INDIANA AVENUE	LEONARD HORTON - EMERY P. ARNOLD HOUSE	1930	DOES NOT CONTRIBUTE DUE TO ALTERATION
210 E INDIANA AVENUE	ALBERT L. BELL HOUSE	1945	CONTRIBUTES
214 E INDIANA AVENUE	ROBERT C. WEAVER HOUSE	1950	CONTRIBUTES
215 E INDIANA AVENUE	MURRAY WHITE - T.R. JEANS HOUSE	1930	DOES NOT CONTRIBUTE DUE TO ALTERATION
221 E INDIANA AVENUE	MENNO SCHMIDT - RAYMOND D. CLINE HOUSE	1935	CONTRIBUTES
222 E INDIANA AVENUE	JAMES W. DAVIS - KATE MITCHELL HOUSE	1935	DOES NOT CONTRIBUTE DUE TO ALTERATION
225 E INDIANA AVENUE	JESSE B. BOYER - GUY L. MORROW HOUSE	1930	CONTRIBUTES
305 E INDIANA AVENUE	ANDRA SMITH - ELLA PECKHAM HOUSE	1930	CONTRIBUTES
306 E INDIANA AVENUE	PHOEBE WHEELER - MARION L. HANGER HOUSE	1940	DOES NOT CONTRIBUTE DUE TO ALTERATION
309 E INDIANA AVENUE	EDGAR D. HARRINGTON - ESSIE R. BAKER HOUSE	1930	DOES NOT CONTRIBUTE DUE TO ALTERATION
311 E INDIANA AVENUE	WAYNE D. CARLIN - HOLLIS A. NUNNERY HOUSE	1930	DOES NOT CONTRIBUTE DUE TO ALTERATION
312 E INDIANA AVENUE	WHITFIELD - CRAWFORD - NUSZ HOUSE	1930	CONTRIBUTES
401 E INDIANA AVENUE	WILLIAM KLECK - DORA BIXLER HOUSE	1930	CONTRIBUTES
402 E INDIANA AVENUE	CHESTER LEADINGFOX HOUSE	1940	CONTRIBUTES
408 E INDIANA AVENUE	ROBERT BISHOP - HIRAM BIXLER HOUSE	1925	CONTRIBUTES
413 E INDIANA AVENUE	CHARLES N. BIXLER HOUSE	1950	DOES NOT CONTRIBUTE DUE TO AGE
421 E INDIANA AVENUE	HOUSE	1935	DOES NOT CONTRIBUTE DUE TO ALTERATION
424 E INDIANA AVENUE	HOUSE	1920	DOES NOT CONTRIBUTE DUE TO ALTERATION
451 E INDIANA AVENUE	CLEVELAND COBB HOUSE	1945	DOES NOT CONTRIBUTE DUE TO ALTERATION

ADDRESS	RESOURCE NAME	YEAR	SIGNIFICANCE DESCRIPTION
452 E INDIANA AVENUE	NEW LIGHT MISSIONARY BAPTIST CHURCH	1954	DOES NOT CONTRIBUTE DUE TO AGE & ALTERATION
459 E INDIANA AVENUE	JAMES W. WELLS HOUSE	1930	CONTRIBUTES
460 E INDIANA AVENUE	FRED B. YOUNG - ELLA ROLLING HOUSE	1940	DOES NOT CONTRIBUTE DUE TO ALTERATION
463 E INDIANA AVENUE	W.B. CLAY - BEULAH FITZPATRICK HOUSE	1935	DOES NOT CONTRIBUTE DUE TO ALTERATION
465 E INDIANA AVENUE	HOUSE	1960	DOES NOT CONTRIBUTE DUE TO AGE
201 E IOWA AVENUE	HOUSE	1910	CONTRIBUTES
202 E IOWA AVENUE	CLAYTON BABB - ELLA ROBINSON HOUSE	1900	CONTRIBUTES
205 E IOWA AVENUE	IVA R. NEEDELS HOUSE	1940	CONTRIBUTES
208 E IOWA AVENUE	ELLEN ANDREWS HOUSE	1950	DOES NOT CONTRIBUTE DUE TO AGE
214 E IOWA AVENUE	HOUSE	1970	DOES NOT CONTRIBUTE DUE TO AGE
217 E IOWA AVENUE	HOUSE	1985	DOES NOT CONTRIBUTE DUE TO AGE
227 E IOWA AVENUE	CHARLES GOODSPEED - EUGENE D. GIBSON HOUSE	1925	DOES NOT CONTRIBUTE DUE TO ALTERATION
230 E IOWA AVENUE	FRANK NOLAND - BERTHA D. NOLAND HOUSE	1925	DOES NOT CONTRIBUTE DUE TO ALTERATION
306 E IOWA AVENUE	GEORGE W.T. SHRIVER - LUNSFORD C. DAVIDSON HOUSE	1930	CONTRIBUTES
314 E IOWA AVENUE	JACK HARPER - VIRGIL J. DODD HOUSE	1935	CONTRIBUTES
317 E IOWA AVENUE	J.R. PARSONS - OLIF KIELY HOUSE	1925	CONTRIBUTES
320 E IOWA AVENUE	CLARENCE S. JORDAN - ELMER HITES HOUSE	1930	DOES NOT CONTRIBUTE DUE TO ALTERATION
325 E IOWA AVENUE	JOHN L. ALLEN - WILLIAM S. MC KINNEY HOUSE	1930	CONTRIBUTES
401 E IOWA AVENUE	JAMES L. TATE - PEARL TATE HOUSE	1910	CONTRIBUTES
456 E IOWA AVENUE	ORLANDO E. HAZLEY - WILLIE M. REID HOUSE	1930	DOES NOT CONTRIBUTE DUE TO ALTERATION

ADDRESS	RESOURCE NAME	YEAR	SIGNIFICANCE DESCRIPTION
458 E IOWA AVENUE	HOUSE	1960	DOES NOT CONTRIBUTE DUE TO AGE
467 E IOWA AVENUE	JOHN DAVIS - LUCILLE HARRIS HOUSE	1910	CONTRIBUTES
470 E IOWA AVENUE	LILLIE GARLICK - JAMES SLATEN HOUSE	1965	DOES NOT CONTRIBUTE DUE TO AGE
473 E IOWA AVENUE	JESSE NOLAN HOUSE	1950	DOES NOT CONTRIBUTE DUE TO AGE
501 E IOWA AVENUE	HOUSE	1975	DOES NOT CONTRIBUTE DUE TO AGE
509 E IOWA AVENUE	EULOGIO/GARCIA - MARTIN L. BELCHER HOUSE	1950	DOES NOT CONTRIBUTE DUE TO AGE
519 E IOWA AVENUE	HOUSE	1955	DOES NOT CONTRIBUTE DUE TO AGE
523 E IOWA AVENUE	REV. JAMES S. PULLMAN HOUSE	1920	CONTRIBUTES
603 E IOWA AVENUE	ROSA FREEMAN - HENRY SULLIVAN HOUSE	1910	DOES NOT CONTRIBUTE DUE TO ALTERATION
101-103 E OHIO AVENUE	DUPLEX	1940	CONTRIBUTES
114 E OHIO AVENUE	HOUSE	1945	DOES NOT CONTRIBUTE DUE TO ALTERATION
132 E OHIO AVENUE	ROBERT D. CRISMAN HOUSE	1950	DOES NOT CONTRIBUTE DUE TO AGE
138 E OHIO AVENUE	CHARLES F. KLOTZ HOUSE	1945	DOES NOT CONTRIBUTE DUE TO ALTERATION
139 E OHIO AVENUE	BUSINESS	1950	DOES NOT CONTRIBUTE DUE TO AGE
142 E OHIO AVENUE	VIRGIL R. GOSE HOUSE	1940	CONTRIBUTES
206 E OHIO AVENUE	MC COY - RUTH - MC BLAIR HOUSE	1930	CONTRIBUTES
213 E OHIO AVENUE	HERBERT E. JOHNSON - EVERETT A. TAYLOR HOUSE	1925	DOES NOT CONTRIBUTE DUE TO ALTERATION
217 E OHIO AVENUE	HOUSE	1980	DOES NOT CONTRIBUTE DUE TO AGE
218 E OHIO AVENUE	ANDREW HUTCHINSON HOUSE	1980	DOES NOT CONTRIBUTE DUE TO AGE
226 E OHIO AVENUE	WILLIAM V. DANT HOUSE	1925	CONTRIBUTES

ADDRESS	RESOURCE NAME	YEAR	SIGNIFICANCE DESCRIPTION
302 E OHIO AVENUE	J.A. MORRIS - ROBERT C. PITTS HOUSE	1925	DOES NOT CONTRIBUTE DUE TO ALTERATION
306 E OHIO AVENUE	GEORGE - RANDOLPH - SCHROEDER HOUSE	1930	DOES NOT CONTRIBUTE DUE TO ALTERATION
325 E OHIO AVENUE	HERBERT C. EGNER - HARRY L. REMBERT HOUSE	1925	DOES NOT CONTRIBUTE DUE TO ALTERATION
409 E OHIO AVENUE	CHARLES KLINGSBERG - ANTON KREJEI HOUSE	1935	CONTRIBUTES
418 E OHIO AVENUE	WILL COUCH HOUSE	1950	DOES NOT CONTRIBUTE DUE TO AGE
420 E OHIO AVENUE	ALBERT GARDNER - NILE F. WINGET HOUSE	1950	DOES NOT CONTRIBUTE DUE TO AGE
422 E OHIO AVENUE	J.L. TAPP - WILLIAM L. VINSON HOUSE	1925	DOES NOT CONTRIBUTE DUE TO ALTERATION
464 E OHIO AVENUE	LONNIE SHANNON HOUSE	1945	CONTRIBUTES
466 E OHIO AVENUE	JESSE WARE HOUSE	1950	DOES NOT CONTRIBUTE DUE TO AGE
468 E OHIO AVENUE	HOUSE	1970	DOES NOT CONTRIBUTE DUE TO AGE
506 E OHIO AVENUE	HARRIS - HILL HOUSE	1925	CONTRIBUTES
518 E OHIO AVENUE	BERTHA ALLEN - BENFORD AND BERTHA BISHOP HOUSE	1935	DOES NOT CONTRIBUTE DUE TO ALTERATION
602 E OHIO AVENUE	HOUSE	1975	DOES NOT CONTRIBUTE DUE TO AGE
609 E OHIO AVENUE	JOHN MC KINNEY - IDA MC KINNEY HOUSE	1925	DOES NOT CONTRIBUTE DUE TO ALTERATION
305 E PARK AVENUE	MARY CHRISTIANSEN - LOUIS R. ROBINSON HOUSE	1925	CONTRIBUTES
315 E PARK AVENUE	CLARENCE W. STEELE HOUSE	1905	CONTRIBUTES
317 E PARK AVENUE	H.T. PATTEN - ORA IRBY HOUSE	1925	DOES NOT CONTRIBUTE DUE TO ALTERATION
701 E PARK AVENUE	ST. STEPHEN'S AFRICAN ME CHURCH	1909	DOES NOT CONTRIBUTE DUE TO ALTERATION
201 E STATE AVENUE	CLARA BLANCHARD - JOHN HICKMAN HOUSE	1925	DOES NOT CONTRIBUTE DUE TO ALTERATION
203 E STATE AVENUE	ALBERT LEWELLEN - LIGGA DAVIS HOUSE	1925	DOES NOT CONTRIBUTE DUE TO ALTERATION

ADDRESS	RESOURCE NAME	YEAR	SIGNIFICANCE DESCRIPTION
211 E STATE AVENUE	FRED CAVENESS - JAKE C. JOHNSON HOUSE	1925	CONTRIBUTES
225 E STATE AVENUE	S.F. BOYCE - FOREST E. WINTERS HOUSE	1925	DOES NOT CONTRIBUTE DUE TO ALTERATION
226 E STATE AVENUE	CLEVELAND - LINDERER - GREGOR HOUSE	1925	CONTRIBUTES
301 E STATE AVENUE	HOUSE	1955	DOES NOT CONTRIBUTE DUE TO AGE
309 E STATE AVENUE	HOUSE	1965	DOES NOT CONTRIBUTE DUE TO AGE
313 E STATE AVENUE	HOUSE	1900	DOES NOT CONTRIBUTE DUE TO ALTERATION
403 E STATE AVENUE	JOHN E. BELVEAL - ROBBIE GRANT HOUSE	1925	CONTRIBUTES
405 E STATE AVENUE	D.R. BISHOP - A.C. PRINCE HOUSE	1915	CONTRIBUTES
411 E STATE AVENUE	J.M. WILHOYT - HARRY D. OWENS HOUSE	1923	DOES NOT CONTRIBUTE DUE TO ALTERATION
415 E STATE AVENUE	CONNOR - HUMPHREY HOUSE	1915	DOES NOT CONTRIBUTE DUE TO ALTERATION
419 E STATE AVENUE	A.E. VORHEIS - MYRTLE MC SWAIN HOUSE	1928	CONTRIBUTES
451 E STATE AVENUE	WASHINGTON RECREATION CENTER	1945	CONTRIBUTES
452 E STATE AVENUE	GEORGE WARD - WILLIE SLATEN HOUSE	1920	CONTRIBUTES
464 E STATE AVENUE	CHARLES WASHINGTON - BRADER JOHNSON HOUSE	1930	CONTRIBUTES
475 E STATE AVENUE	MARY PAXTON SILVERS HOUSE	1910	CONTRIBUTES
476 E STATE AVENUE	MORTUARY	1970	DOES NOT CONTRIBUTE DUE TO AGE
501 E STATE AVENUE	HOUSE	1955	DOES NOT CONTRIBUTE DUE TO AGE
502 E STATE AVENUE	HOUSE	1970	DOES NOT CONTRIBUTE DUE TO AGE
505 E STATE AVENUE	ELIZA BATY HILL - JOHN GREEN HOUSE	1905	CONTRIBUTES
506 E STATE AVENUE	HOUSE	1970	DOES NOT CONTRIBUTE DUE TO AGE

ADDRESS	RESOURCE NAME	YEAR	SIGNIFICANCE DESCRIPTION
513 E STATE AVENUE	HENRY HAYNES HOUSE	1940	CONTRIBUTES
516 E STATE AVENUE	RICHARD HICKS - JAMES NEAL HOUSE	1925	CONTRIBUTES
519 E STATE AVENUE	CLARENCE STEEL - CASSIA EASTMAN HOUSE	1925	CONTRIBUTES
520 E STATE AVENUE	HOUSE	1955	DOES NOT CONTRIBUTE DUE TO AGE
521 E STATE AVENUE	TEXAS AND AURELIUS SLATEN HOUSE	1928	DOES NOT CONTRIBUTE DUE TO ALTERATION
525 E STATE AVENUE	EARL SLATEN - PEARL SCOTT HOUSE	1905	CONTRIBUTES
526 E STATE AVENUE	ROBERT TEAGUE HOUSE	1945	DOES NOT CONTRIBUTE DUE TO ALTERATION
602 E STATE AVENUE	HENRY AND LOUELLA CALDWELL HOUSE	1905	DOES NOT CONTRIBUTE DUE TO ALTERATION
605 E STATE AVENUE	HICKMAN - HARRIS - ECKFORD HOUSE	1925	DOES NOT CONTRIBUTE DUE TO ALTERATION
625 E STATE AVENUE	HOUSE	1905	DOES NOT CONTRIBUTE DUE TO ALTERATION
627 E STATE AVENUE	HOUSE	1985	DOES NOT CONTRIBUTE DUE TO AGE
201 E WABASH AVENUE	HOUSE	1923	CONTRIBUTES
207 E WABASH AVENUE	AUGUSTINE DIAZ - SIDNEY BATCHELDER HOUSE	1935	DOES NOT CONTRIBUTE DUE TO ALTERATION
208 E WABASH AVENUE	S.C. AND BESSIE WIGGS HOUSE	1925	CONTRIBUTES
212 E WABASH AVENUE	R.J. CRUMP HOUSE	1925	CONTRIBUTES
215 E WABASH AVENUE	PAUL BOSTWICK - CLYDE OTT HOUSE	1925	DOES NOT CONTRIBUTE DUE TO ALTERATION
218 E WABASH AVENUE	HOUSE	1945	DOES NOT CONTRIBUTE DUE TO ALTERATION
219 E WABASH AVENUE	GORRE - RODRIGUEZ - DOUGLAS HOUSE	1925	CONTRIBUTES
222 E WABASH AVENUE	J.C. JEWELL - ELMER E. WHEELER HOUSE	1925	CONTRIBUTES
223 E WABASH AVENUE	HENRY REIM - WILLIAM R. GUTHRIE HOUSE	1925	DOES NOT CONTRIBUTE DUE TO ALTERATION

ADDRESS	RESOURCE NAME	YEAR	SIGNIFICANCE DESCRIPTION
302 E WABASH AVENUE	LEROY WILSON HOUSE	1940	CONTRIBUTES
321 E WABASH AVENUE	MARVIN E. BRAUNER HOUSE	1955	DOES NOT CONTRIBUTE DUE TO AGE
402 E WABASH AVENUE	JILES TATE HOUSE	1900	CONTRIBUTES
406 E WABASH AVENUE	WILLIE WEST HOUSE	1900	DOES NOT CONTRIBUTE DUE TO ALTERATION
409 E WABASH AVENUE	HOUSE	1962	DOES NOT CONTRIBUTE DUE TO AGE
410 E WABASH AVENUE	GRANT PRINCE HOUSE	1950	DOES NOT CONTRIBUTE DUE TO AGE
412 E WABASH AVENUE	HOUSE	1935	CONTRIBUTES
413 E WABASH AVENUE	ETHEL M. JOHNSON HOUSE	1905	DOES NOT CONTRIBUTE DUE TO ALTERATION
450 E WABASH AVENUE	MRS. EULA JOHNSON HOUSE	1905	DOES NOT CONTRIBUTE DUE TO ALTERATION
454 E WABASH AVENUE	IDELLA REED HOUSE	1930	DOES NOT CONTRIBUTE DUE TO ALTERATION
457 E WABASH AVENUE	HOUSE	1910	DOES NOT CONTRIBUTE DUE TO ALTERATION
459 E WABASH AVENUE	HOUSE	1975	DOES NOT CONTRIBUTE DUE TO AGE
463 E WABASH AVENUE	HOUSE	1970	DOES NOT CONTRIBUTE DUE TO AGE
472 E WABASH AVENUE	ALSTON KINNER HOUSE	1940	DOES NOT CONTRIBUTE DUE TO ALTERATION
475 E WABASH AVENUE	HOUSE	1970	DOES NOT CONTRIBUTE DUE TO AGE
502 E WABASH AVENUE	HOUSE	1975	DOES NOT CONTRIBUTE DUE TO AGE
516 E WABASH AVENUE	THEO. MORGAN - AUBREY C. SWAN HOUSE	1920	CONTRIBUTES
520 E WABASH AVENUE	TABERNACLE BAPTIST CHURCH	1920	DOES NOT CONTRIBUTE DUE TO ALTERATION
602 E WABASH AVENUE	JOHN CABELL - ARCHIE AND MAGGIE FORD HOUSE	1925	CONTRIBUTES
101 E YORK AVENUE	THE TEXAS OIL COMPANY	1930	CONTRIBUTES

ADDRESS	RESOURCE NAME	YEAR	SIGNIFICANCE DESCRIPTION
118 E YORK AVENUE	ED FITZGERALD SAND COMPANY	1955	DOES NOT CONTRIBUTE DUE TO ALTERATION
122 E YORK AVENUE	ARTHUR TARPLEY - WALTER NEVILLE HOUSE	1930	CONTRIBUTES
205 E YORK AVENUE	GEORGE JAMES - JAMES MINTIE HOUSE	1925	CONTRIBUTES
206 E YORK AVENUE	CLAY AND LULA MC CARTHY HOUSE	1925	CONTRIBUTES
209 E YORK AVENUE	HOUSE	1920	CONTRIBUTES
212 E YORK AVENUE	PEGGY WHEELER - HAROLD KEPPORD HOUSE	1930	CONTRIBUTES
213 E YORK AVENUE	HENRY SIMPSON - LUTHER GORMAN HOUSE	1930	CONTRIBUTES
217 E YORK AVENUE	C.L. LOOMIS - EDWARD V. SARLES HOUSE	1920	CONTRIBUTES
218 E YORK AVENUE	FRANK AND EDNA WALLACE - MANUEL JIMENEZ HOUSE	1923	CONTRIBUTES
220 E YORK AVENUE	JACK SOUTHERS HOUSE	1930	CONTRIBUTES
226 E YORK AVENUE	LARKIN DODD - JAMES DAVIS HOUSE	1925	CONTRIBUTES
227 E YORK AVENUE	ARCHIE CRANDALL - THOMAS AND ALTA KOEN HOUSE	1925	CONTRIBUTES
302 A E YORK AVENUE	HOUSE	1981	DOES NOT CONTRIBUTE DUE TO AGE
302 B E YORK AVENUE	RESTAURANT	1990	DOES NOT CONTRIBUTE DUE TO AGE
305 E YORK AVENUE	CHARLES HENRY - VEARL SIBIT HOUSE	1930	CONTRIBUTES
309 E YORK AVENUE	GOLDEN CHOATE - MABEL POLWORT HOUSE	1930	CONTRIBUTES
310 E YORK AVENUE	SAMUEL DODD - EMIL KARRENBROCK HOUSE	1930	DOES NOT CONTRIBUTE DUE TO ALTERATION
313 E YORK AVENUE	BUELL DYKES - GLENN ARNOLD HOUSE	1930	CONTRIBUTES
314 E YORK AVENUE	ROBERT DODSON - CHARLES CROOKS HOUSE	1930	CONTRIBUTES
316 E YORK AVENUE	RICHARD CRUMP - ELLIS MORRIS HOUSE	1930	CONTRIBUTES

ADDRESS	RESOURCE NAME	YEAR	SIGNIFICANCE DESCRIPTION
320 E YORK AVENUE	EMMETT WOODS HOUSE	1930	CONTRIBUTES
401 E YORK AVENUE	LOUIS AND COLUMBUS DODD HOUSE	1925	DOES NOT CONTRIBUTE DUE TO ALTERATION
402 E YORK AVENUE	WYNONA AND DANIEL THEODOSIS HOUSE	1925	CONTRIBUTES
406 E YORK AVENUE	HOUSE	1940	CONTRIBUTES
410 E YORK AVENUE	MEEKS MARKET AND GROCERY	1920	CONTRIBUTES
418 E YORK AVENUE	C.E. DE HAAS HOUSE	1930	DOES NOT CONTRIBUTE DUE TO ALTERATION
419 E YORK AVENUE	BART MALONEY HOUSE	1920	CONTRIBUTES
421 E YORK AVENUE	HOUSE	1940	CONTRIBUTES
452 E YORK AVENUE	ALBERT VEAL HOUSE	1915	CONTRIBUTES
456 E YORK AVENUE	THOMAS DUNCAN - RHOLLIE E. JOHNSON HOUSE	1920	CONTRIBUTES
460 E YORK AVENUE	HOUSE	1970	DOES NOT CONTRIBUTE DUE TO AGE
466 E YORK AVENUE	HOUSE	1900	CONTRIBUTES
476 E YORK AVENUE	HOUSE	1965	DOES NOT CONTRIBUTE DUE TO AGE
477 E YORK AVENUE	CHARLES BUSHEEM GROCERY	1930	CONTRIBUTES
501 E YORK AVENUE	CHURCH OF GOD IN CHRIST	1950	DOES NOT CONTRIBUTE DUE TO AGE
521 E YORK AVENUE	ANTHONY AND CORA DUNN HOUSE AND GROCERY	1930	DOES NOT CONTRIBUTE DUE TO ALTERATION
602 E YORK AVENUE	CHESTER M. THREAT HOUSE	1950	DOES NOT CONTRIBUTE DUE TO AGE & ALTERATION
611 E YORK AVENUE	ETHEL L. CARR HOUSE	1950	DOES NOT CONTRIBUTE DUE TO AGE
616 E YORK AVENUE	ELIZABETH GREENE HOUSE	1920	CONTRIBUTES
618 E YORK AVENUE	MABEL HAYNES GARAGE	1930	CONTRIBUTES

ADDRESS	RESOURCE NAME	YEAR	SIGNIFICANCE DESCRIPTION
700 BLOCK (BRIDGE) E YORK AVENUE	BRIDGE	1981	DOES NOT CONTRIBUTE DUE TO AGE
1006 S TEXAS STREET	GENE R. BUFORD HOUSE	1950	DOES NOT CONTRIBUTE DUE TO AGE
1008 S TEXAS STREET	HOUSE	1955	DOES NOT CONTRIBUTE DUE TO AGE
1223 LEONA MITCHELL BOULEVARD	HOUSE	1930	CONTRIBUTES
630 LEONA MITCHELL PLACE	BODY OF CHRIST MINISTRIES	1975	DOES NOT CONTRIBUTE DUE TO AGE
120 E OWEN K. GARRIOTT ROAD	HOUSE	1980	DOES NOT CONTRIBUTE DUE TO AGE
202 E OWEN K. GARRIOTT ROAD	BUSINESS	1970	DOES NOT CONTRIBUTE DUE TO AGE
207 E OWEN K. GARRIOTT ROAD	M. ALLOWAY GROCERY - A. HARVESTER SUPPLY COMPANY	1920	DOES NOT CONTRIBUTE DUE TO ALTERATION
208 E OWEN K. GARRIOTT ROAD	HOUSE	1975	DOES NOT CONTRIBUTE DUE TO AGE
211 E OWEN K. GARRIOTT ROAD	OKLOHOMA BARBEQUE CAFE	1935	DOES NOT CONTRIBUTE DUE TO ALTERATION
215 E OWEN K. GARRIOTT ROAD	J.A. PAYNE - GEORGE W. TYLES HOUSE	1925	DOES NOT CONTRIBUTE DUE TO ALTERATION
217-221 E OWEN K. GARRIOTT ROAD	CONVENIENCE STORE	1975	DOES NOT CONTRIBUTE DUE TO AGE
228 E OWEN K. GARRIOTT ROAD	ELECTRICAL SUBSTATION	1975	DOES NOT CONTRIBUTE DUE TO AGE
310-312-314 E OWEN K. GARRIOTT ROAD	OFFICES	1985	DOES NOT CONTRIBUTE DUE TO AGE
334 E OWEN K. GARRIOTT ROAD	CHURCH	1981	DOES NOT CONTRIBUTE DUE TO AGE
451 E OWEN K. GARRIOTT ROAD	WILLIAMS - CRIDDLE - SMITH HOUSE	1925	INDIVIDUALLY ELIGIBLE FOR LISTING IN THE